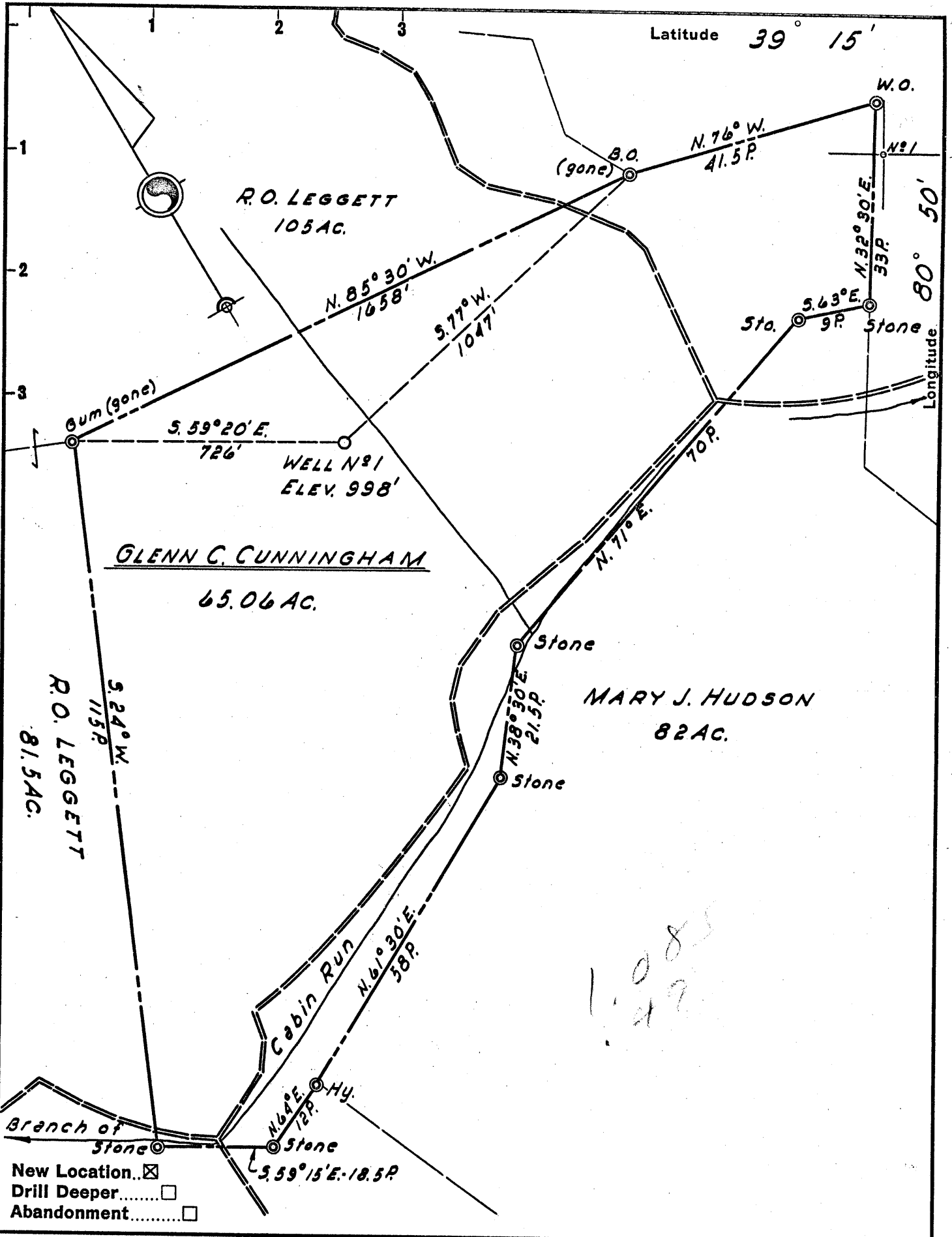


P



1088  
149

Company	<u>R. J. HUNTER</u>
Address	<u>108 NEELY AVE. - WEST UNION, W. VA.</u>
Farm	<u>GLENN C. CUNNINGHAM</u>
Tract	Acres <u>65.06</u> Lease No. _____
Well (Farm) No.	<u>1</u> Serial No. _____
Elevation (Spirit Level)	<u>998'</u>
Quadrangle	<u>HOLBROOK NC</u>
County	<u>DODDRIDGE</u> District <u>CENTRAL</u>
Engineer	<u>JOHN W. HAMILTON</u>
Engineer's Registration No.	<u>2274</u>
File No.	Drawing No. _____
Date	<u>SEPT. 2, 1958</u> Scale <u>1" = 20 POLES</u>

STATE OF WEST VIRGINIA  
DEPARTMENT OF MINES  
OIL AND GAS DIVISION  
CHARLESTON

**WELL LOCATION MAP**  
FILE NO. DOD-262

+ Denotes location of well on United States Topographic Maps, scale 1 to 62,500, latitude and longitude lines being represented by border lines as shown.

- Denotes one inch spaces on border line of original tracing.



STATE OF WEST VIRGINIA  
DEPARTMENT OF MINES  
OIL AND GAS DIVISION 2

Quadrangle Holbrook

Permit No. DOD-262

**WELL RECORD**

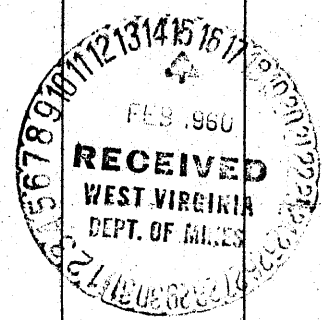
Oil or Gas Well Gas

Company R J Hunter  
Address West Union, W Va  
Farm Glenn C Cunningham Acres 65.06  
Location (waters) Cabin Creek, Branch  
Well No. 90981 Elev. 90981  
District Central County Doddridge  
The surface of tract is owned in fee by G C Cunningham  
Address Newberg, W Va  
Mineral rights are owned by Same  
Address \_\_\_\_\_  
Drilling commenced 9-15-58  
Drilling completed 12-15-58  
Date Shot \_\_\_\_\_ From \_\_\_\_\_ To \_\_\_\_\_  
With \_\_\_\_\_  
Open Flow \_\_\_\_\_ /10ths Water in \_\_\_\_\_ Inch  
\_\_\_\_\_ /10ths Merc. in \_\_\_\_\_ Inch  
Volume 20,000 Cu. Ft. (Estimated) Cu. Ft.  
Rock Pressure \_\_\_\_\_ lbs. \_\_\_\_\_ hrs.  
Oil \_\_\_\_\_ bbls., 1st 24 hrs.  
WELL ACIDIZED 11-22-58  
2000 gal Dowell  
WELL FRACTURED 11-22-58

Casing and Tubing	Used in Drilling	Left in Well	Packers
Size			Kind of Packer
16			5" Parco Anchor
18	16'	0	Size of <u>5 3/16</u>
10	62'		Depth set <u>1888'</u>
8 1/4	500'		Perf. top _____
6 3/4	1177'		Perf. bottom <u>8'</u>
5 3/16	1900'	1900'	Perf. top _____
3			Perf. bottom _____
2			
Liners Used			

CASING CEMENTED 1900' SIZE 2 1/2" No. Ft. \_\_\_\_\_ Date \_\_\_\_\_  
No Coal Found  
COAL WAS ENCOUNTERED AT \_\_\_\_\_ FEET \_\_\_\_\_ INCHES  
\_\_\_\_\_ FEET \_\_\_\_\_ INCHES \_\_\_\_\_ FEET \_\_\_\_\_ INCHES  
\_\_\_\_\_ FEET \_\_\_\_\_ INCHES \_\_\_\_\_ FEET \_\_\_\_\_ INCHES  
Fresh Water \_\_\_\_\_ Feet Salt Water \_\_\_\_\_ Feet

Formation	Color	Hard or Soft	Top	Bottom	Oil, Gas or Water	Depth	Remarks
Clay			0	50			
Sand & Slate			50	173	Water	50-74	
R Rock			173	190			
Slate, Shells			190	260			
R Rock			260	301			
Slate & Sand			301	345			
R Rock & Lime			345	440			
Blue Slate			440	450			
Mud & Blue Slate			450	515			
Lime & R Rock			515	570			
Slate & Lime			570	635			
Sand & Slate			635	700			
R Rock			700	753			
Lime			753	778			
Slate			778	855			
Sand			855	900			
Slate & R Rock			900	960			
Lime			960	998			
Sand			998	1010			
Slate			1010	1046			
Sand			1046	1088			
Slate & Sandy Lime			1088	1260			
Lime			1260	1331			
Shale & Lime			1331	1546			
Sand			1546	1560			
Shale & Lime			1560	1760			
Gray Sand			1760	1810			
Gray Shale			1810	1850	Water	1765-1794	
Lime			1850	1865			
B Slate			1865	1870			
B Monday			1870	(over) 1880			
Break			1880	1883			
Line, Big			1883	1964			



F-58

Formation	Color	Hard or Soft	Top <i>2</i>	Bottom	Oil, Gas or Water	Depth Found	Remarks
Keener Sand Injun Sand			1964 1988	1988 2022	Gas "	1975- 2010	Oil Smell " Show