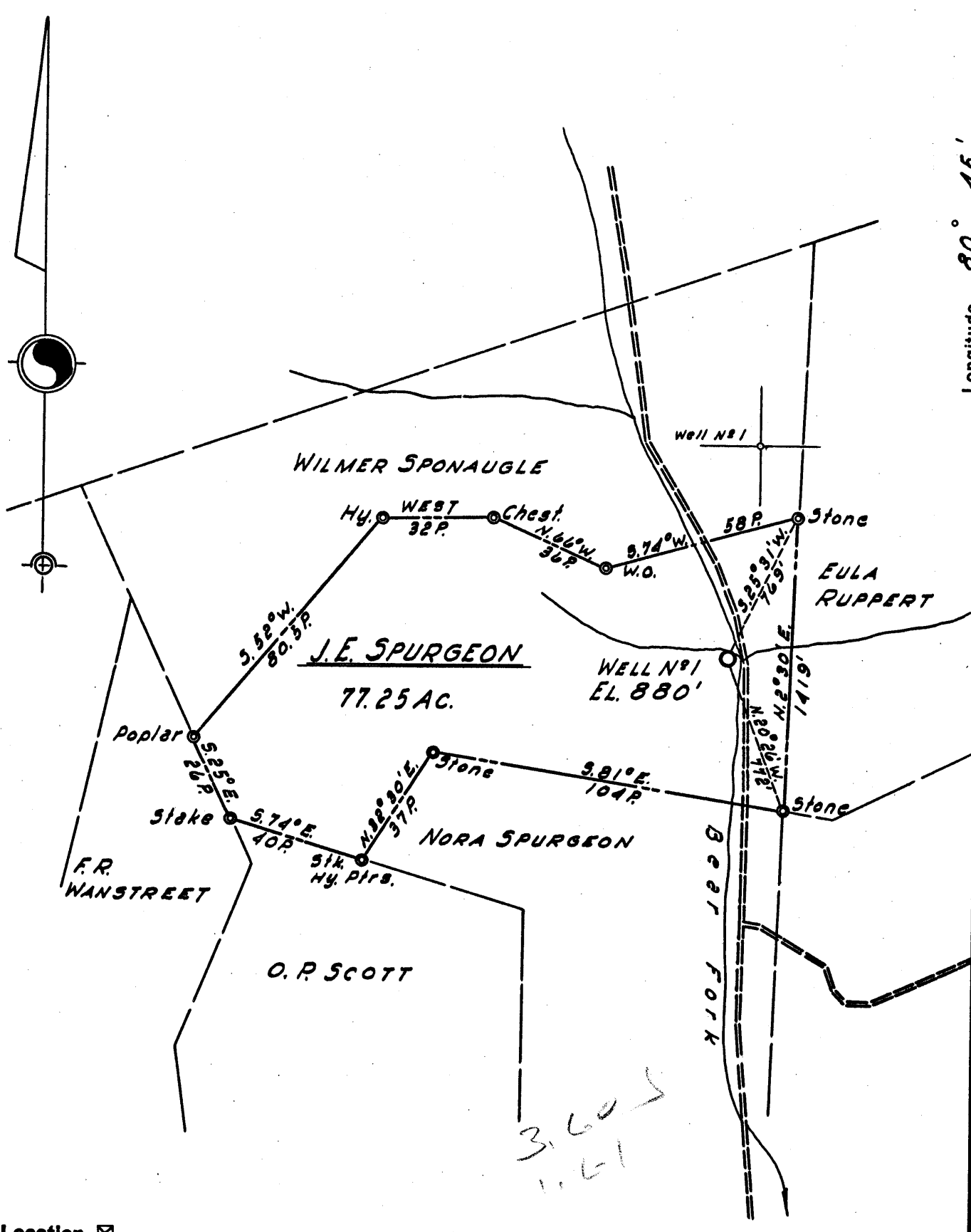


Latitude 39° 10'

Longitude 80° 45'



New Location..
 Drill Deeper.....
 Abandonment.....

| | |
|-----------------------------|---|
| Company | <u>KENNETH SUMMERS</u> |
| Address | <u>BRISTOL, WEST VA.</u> |
| Farm | <u>J. E. SPURGEON</u> |
| Tract | Acres <u>77.25</u> Lease No. _____ |
| Well (Farm) No. | <u>1</u> Serial No. _____ |
| Elevation (Spirit Level) | <u>880'</u> |
| Quadrangle | <u>HOLBROOKE C</u> |
| County | <u>DODDRIDGE</u> District <u>COVE</u> |
| Engineer | <u>JOHN W. HAMILTON</u> |
| Engineer's Registration No. | <u>2274</u> |
| File No. | _____ Drawing No. _____ |
| Date | <u>AUG. 22, 1958</u> Scale <u>1"=40 POLES</u> |

STATE OF WEST VIRGINIA
 DEPARTMENT OF MINES
 OIL AND GAS DIVISION
 CHARLESTON

WELL LOCATION MAP

FILE NO. DOD-261

+ Denotes location of well on United States Topographic Maps, scale 1 to 62,500, latitude and longitude lines being represented by border lines as shown.

- Denotes one inch spaces on border line of original tracing.

6-0 133



STATE OF WEST VIRGINIA
DEPARTMENT OF MINES
OIL AND GAS DIVISION

Quadrangle Halbrook

Permit No. DOD 261

WELL RECORD

Oil or Gas Well Gas
(KIND)

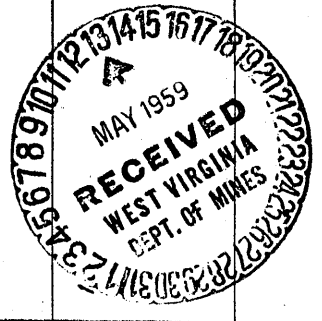
Company W. E. Spurgeon
Address Highway 90-1
Farm J. E. Spurgeon Acres 77.25
Location (waters) Deep Fork
Well No. 1 Elev. 880ft.
District Cane County Boydridge
The surface of tract is owned in fee by J. E. Spurgeon
Address Highway 90-1
Mineral rights are owned by J. E. Spurgeon
Address Highway 90-1
Drilling commenced Sept. 9, 1958
Drilling completed Jan. 8, 1959
Date Shot From To
With
Open Flow /10ths Water in _____ Inch
/10ths Merc. in _____ Inch
Volume 250,000 Cu. Ft.
Rock Pressure 650 lbs. 24 hrs.
Oil _____ bbls., 1st 24 hrs.
WELL ACIDIZED _____

| Casing and Tubing | Used in Drilling | Left in Well | Packers |
|-------------------|------------------|--------------|--------------------------|
| Size | | | Kind of Packer |
| 16 | | | <u>Woodruff</u> |
| 13 | | | Size of <u>2 1/2</u> |
| 10 | | | Depth set <u>1825</u> |
| 8 3/4 | <u>276</u> | | Perf. top <u>1825</u> |
| 6 5/8 | <u>953</u> | | Perf. bottom <u>1820</u> |
| 5 3/16 | <u>1790</u> | <u>1790</u> | Perf. top _____ |
| 3 | | | Perf. bottom _____ |
| 2 | <u>1902</u> | <u>1902</u> | |
| Liners Used | | | |

CASING CEMENTED _____ SIZE _____ No. Ft. _____ Date _____
COAL WAS ENCOUNTERED AT _____ FEET _____ INCHES
_____ FEET _____ INCHES _____ FEET _____ INCHES
_____ FEET _____ INCHES _____ FEET _____ INCHES

WELL FRACTURED 650 bbl of water 20,000 lbs sand
RESULT AFTER TREATMENT 450,000 - 500,000
ROCK PRESSURE AFTER TREATMENT 650
Fresh Water _____ Feet 250' Salt Water _____ Feet _____

| Formation | Color | Hard or Soft | Top | Bottom | Oil, Gas or Water | Depth | Remarks |
|--------------|-------|--------------|------|--------|-------------------|-------|-----------|
| Clay&gravel | | | 0 | 20 | | | |
| Red Rock | | | 20 | 60 | | | |
| Line shell | | | 60 | 65 | | | |
| Slate | | | 65 | 95 | | | |
| Red Rock | | | 95 | 125 | | | |
| | | | 125 | 130 | | | |
| Sand | | | 130 | 150 | | | |
| Slate | | | 150 | 165 | | | |
| Red Rock | | | 165 | 205 | | | |
| Sand | | | 205 | 270 | | | |
| W. Slate | | | 270 | 280 | Water | 250 | hole full |
| Red Rock | | | 280 | 300 | | | |
| Slate&Shell | | | 300 | 350 | | | |
| Lime | | | 350 | 382 | | | |
| Slate&shell | | | 382 | 495 | | | |
| Red rock | | | 495 | 502 | | | |
| Slate&shell | | | 502 | 525 | | | |
| Red rock | | | 525 | 595 | | | |
| Slate&shells | | | 595 | 718 | | | |
| Red rock | | | 718 | 795 | | | |
| Slate&shell | | | 795 | 823 | | | |
| Red rock | | | 823 | 840 | | | |
| Slate&shell | | | 840 | 850 | | | |
| Red rock | | | 850 | 870 | | | |
| Slate | blue | | 870 | 910 | | | |
| sand | | | 910 | 928 | | | |
| slate&shell | | | 928 | 1014 | | | |
| sand | | | 1014 | 1035 | | | |



(over)

F59

| Formation | Color | Hard or Soft | Top | Bottom | Oil, Gas or Water | Depth Found | Remarks |
|--|-------|--------------|--------|-------------|-------------------|-------------|---------|
| black slate | | | 1035 | 1050 | | | |
| slate&shell | | | 1050 | 1060 | | | |
| sand | | | 1060 | 1082 | | | |
| slate&shell | | | 1082 | 1110 | | | |
| sand | | | 1110 | 1285 | | | |
| slate | black | | 1285 | 1330 | | | |
| sand | | | 1330 | 1360 | | | |
| slate&shell | | | 1360 | 1397 | | | |
| sand | | | 1397 | 1470 | | | |
| slate&shell | | | 1470 | 1557 | | | |
| sand | | | 1557 | 1620 | | | |
| slate | black | | 1620 | 1695 | | | |
| sand | | | 1695 | 1716 | | | |
| slate&shell | | | 1716 | 1734 | | | |
| <i>fine sand</i> | | | - 1734 | 1758 | | | |
| | | | 1758 | 1762 | | | |
| smell of oil & gas at 1759 ; gas 1856 to 1871: | | | | show of oil | 1903; rainbow | 1885 | |
| <i>Big Sand</i> | | | - 1774 | 1833 | | | |
| <i>Finer</i> | | | 1833 | 1833? | | | |
| | | | | | TD @ 1 cast | | |