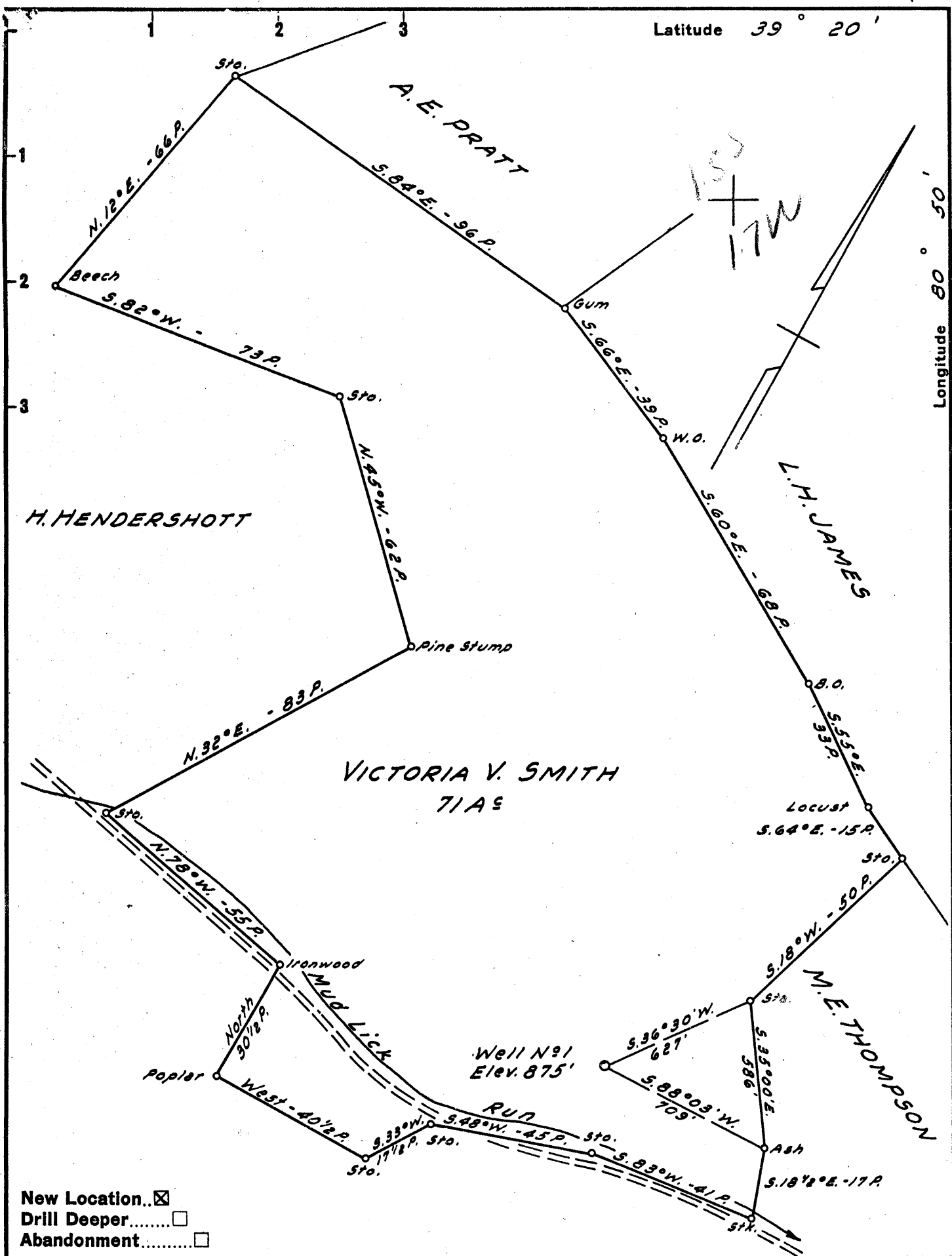


P 1



New Location...   
 Drill Deeper.....   
 Abandonment.....

Company	<u>W.H. MOSSOR</u>
Address	<u>HARRISVILLE, W. VA.</u>
Farm	<u>VICTORIA V. SMITH</u>
Tract	Acres <u>71</u> Lease No. _____
Well (Farm) No.	<u>1</u> Serial No. _____
Elevation (Spirit Level)	<u>875'</u>
Quadrangle	<u>WEST UNION - SC</u>
County	<u>DODDRIDGE</u> District <u>CENTRAL</u>
Engineer	<u>JOHN W. HAMILTON</u>
Engineer's Registration No.	<u>2274</u>
File No.	_____ Drawing No. _____
Date	<u>SEPT. 19, 1957</u> Scale <u>1" = 30 POLES</u>

STATE OF WEST VIRGINIA  
 DEPARTMENT OF MINES  
 OIL AND GAS DIVISION  
 CHARLESTON

**WELL LOCATION MAP**  
 FILE NO. DOD-234

+ Denotes location of well on United States Topographic Maps, scale 1 to 62,500, latitude and longitude lines being represented by border lines as shown.

- Denotes one inch spaces on border line of original tracing.

6-6 90

Fract



STATE OF WEST VIRGINIA  
DEPARTMENT OF MINES  
OIL AND GAS DIVISION

Quadrangle West Union

Permit No. DOD 234

WELL RECORD

Oil or Gas Well Gas both  
(KIND)

Company Smith Oil & Gas Co. (W.H. Mossor)  
Address Harrisville, W. Va.  
Farm Victoria Smith Acres 99 1/2  
Location (waters) Mud Lick  
Well No. 1 Elev 875  
District Central County Doddridge  
The surface of tract is owned in fee by Victoria Smith  
Address Baltimore, Md.  
Mineral rights are owned by Victoria Smith  
Address Baltimore, Md.  
Drilling commenced Oct. 30, 1957  
Drilling completed Dec. 22, 1957  
Date Shot no From \_\_\_\_\_ To \_\_\_\_\_  
With \_\_\_\_\_  
Open Flow 6 /10ths Water in 2 Inch  
\_\_\_\_\_ /10ths Merc. in \_\_\_\_\_ Inch  
Volume 103,000 Cu. Ft.  
Rock Pressure 635 lbs. 4 days hrs.  
Oil 3 gallon bbls., 1st 24 hrs.  
Fresh water 15 feet 20 feet  
Salt water 835 feet 1240 & 1265 feet

Casing and Tubing	Used in Drilling	Left in Well	Packers
Size	10	10	
16			Kind of Packer
13			
10	384		Size of
8 1/4	848	<del>848</del>	
6 1/2	1270	1270	Depth set
5 3/16	1702	1702	
3			Perf. top
2			Perf. bottom
Liners Used			Perf. top
			Perf. bottom

CASING CEMENTED \_\_\_\_\_ SIZE \_\_\_\_\_ No. Ft. \_\_\_\_\_ Date \_\_\_\_\_

COAL WAS ENCOUNTERED AT \_\_\_\_\_ FEET \_\_\_\_\_ INCHES  
\_\_\_\_\_ FEET \_\_\_\_\_ INCHES FEET \_\_\_\_\_ INCHES  
\_\_\_\_\_ FEET \_\_\_\_\_ INCHES FEET \_\_\_\_\_ INCHES

Formation	Color	Hard or Soft	Top	Bottom	Oil, Gas or Water	Depth Found	Remarks
Gravel			0	8			
Red Rock			8	30	water	15 & 20'	
Sand			30	35			
Red Rock & Shells			35	95			
Sand			95	110			
Slate & Shells			110	120			
Red Rock			120	152			
Slate			152	168			
Sand			168	190			
Slate			190	215			
Red Rock			215	235			
Lime			235	250			
Red Rock			250	260			
Red Rock & Shells			260	305			
Slate			305	315			
Sand			315	383			
Slate			383	400			
Slate & Red Rock			400	415			
Shells & Slate			415	445			
Lime	Black	hard	445	475			
Slate & Shells	white		475	575			
Red Rock			575	665			
Lime Shell			665	680			
Red Rock			680	693			
Lime		Hard	693	698			
Slate & Shells			698	755			
Slate	Black		755	775			
Red Rock & Shells			775	835			
Lime			835	850			
Slate & Shells			850	930			
Sand	Dark		930	945			
Slate	Black		945	960			
Sand	White		960	995			
Slate & Shells			995	1090			

(Over)

Fract.

Formation	Color	Hard or Soft	Top	Bottom	Oil, Gas or Water	Depth Found	Remarks
Slate	Black		1090	1170			
Sand	White		1170	1200			
Lime & Sand	Dark		1200	1210			
Sand			1210	1330	water 1240 & 1265		Hole full
Slate	Black		1330	1420			
Slate	Black		1420	1425			
Sand	White		1425	1435			
Slate	Dark		1435	1465			
Slate & Shells			1465	1475	1681		
Sand			1475	1525	875		
Slate	Black		1525	1540	606		
Shells & Slate			1540	1593			
Sand			1593	1605			
Slate	White		1605	1610			
Red Rock			1610	1615			
Shells & Slate			1615	1648			
Little Lime			1648	1669			
Sandy Lime			1669	1676			
Slate			1676	1681			
Big Lime			1681	1758	Steel line run 1709 1/2'		
Sand			1758	1792 92	Small oil 1768' & 1780'		
Lime	Dark		1792	1800			
Sand	White		1800	1855	show oil 1830	Gas 1830-1838	
Slate	Black		1855			6/10 W 2"	
						100,000	
Total Depth			1900				Blowed down to 20/10 W 1" 50,000 cu. ft
							Rock Pressure 400 in 35 hrs. 435 in one week. After fracture 635 lb.
							After 20 M <u>Dowell</u> 3 Bbl. oil

Date Jan. 18, 1953, 19

APPROVED Smith Oil & Gas Co., Owner

By W. H. Messer, Partner  
(Title)