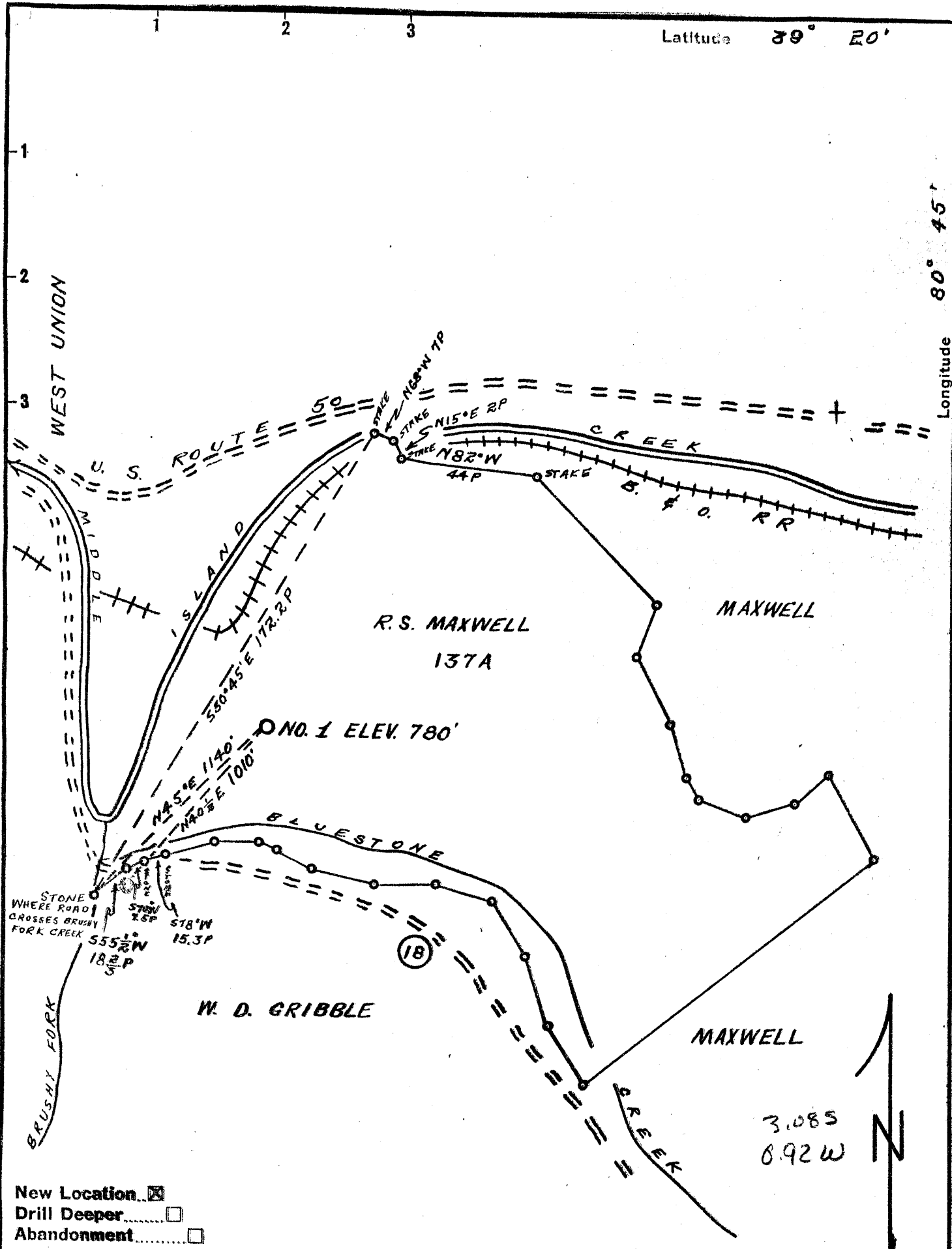


Latitude 39° 20'

Longitude 80° 45'



New Location
 Drill Deeper
 Abandonment

Company C. O. TRAVIS, ET AL
 Address WEST UNION, W. VA.
 Farm R. S. MAXWELL
 Tract _____ Acres 137 Lease No. _____
 Well (Farm) No. 1 Serial No. _____
 Elevation (Spirit Level) 780'
 Quadrangle WEST UNION SE
 County DODDRIDGE District WEST UNION
 Engineer Donald W. Morris
BY J. F. DEEM
 Engineer's Registration No. 1653
 File No. _____ Drawing No. _____
 Date AUG. 19, 1955 Scale 1" = 40 POLES

STATE OF WEST VIRGINIA
 DEPARTMENT OF MINES
 OIL AND GAS DIVISION
 CHARLESTON

WELL LOCATION MAP
 FILE NO. DOD-216

+ Demotes location of well on United States Topographic Maps, scale 1 to 62,500, latitude and longitude lines being represented by border lines as shown.

- Demotes one inch spaces on border line of original tracing.