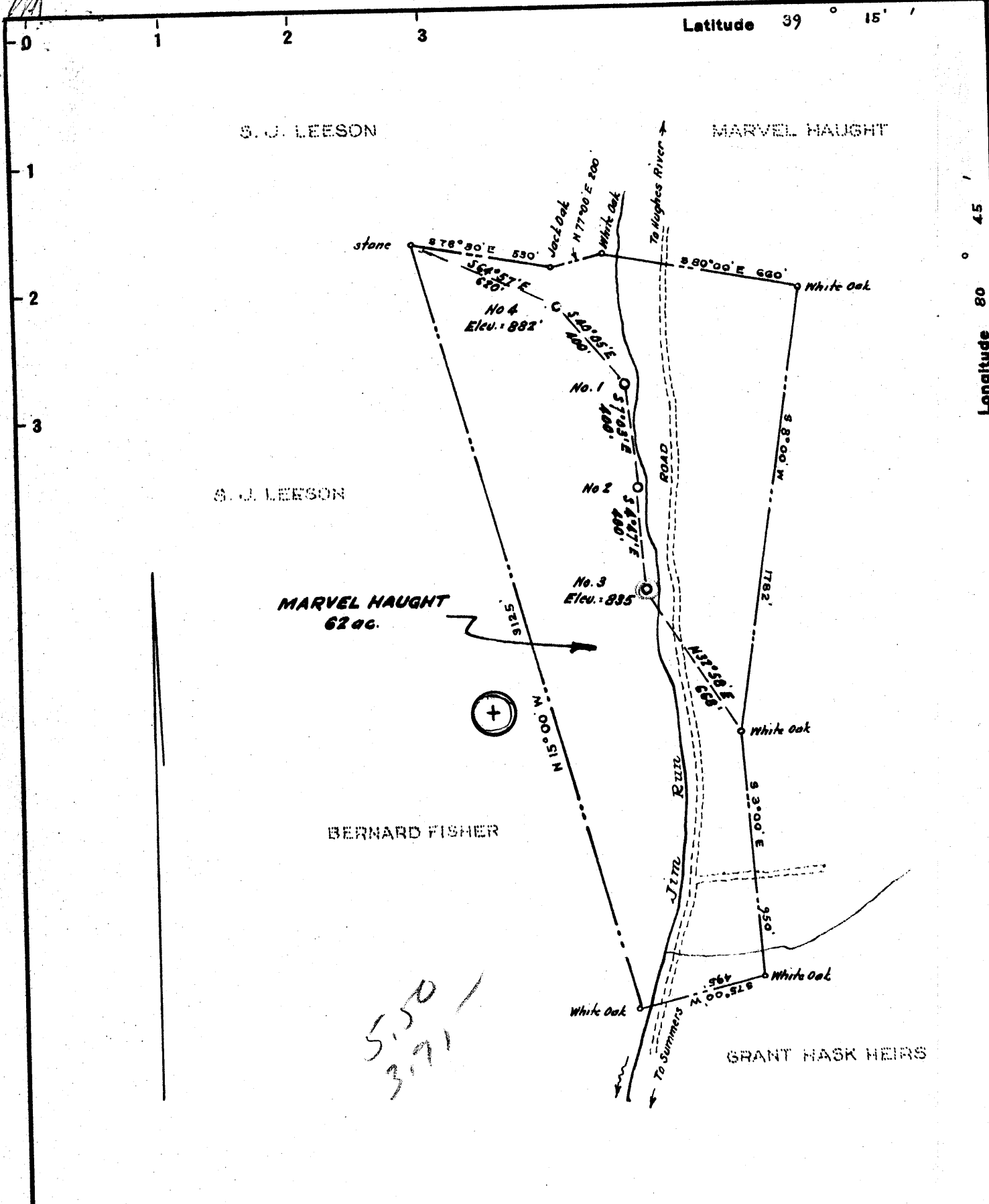


Latitude 39° 15'

Longitude 80° 45'



5.50
3.71

New Location
 Drill Deeper
 Abandonment

Coal & surface owned by Marvel Haught, whose post office address is Oxford, W. Va.

Company P. AND M. OIL CO.
 Address West Union, W. Va.
 Farm Marvel Haught
 Tract _____ Acres 62 Lease No. _____
 Well (Farm) No. 3 and 4 Serial No. _____
 Elevation (Spirit Level) 882.6'
 Quadrangle Holbrook NE
 County Doddridge District Southwest
 Engineer M. Abbe
 Engineer's Registration No. 1227
 File No. _____ Drawing No. _____
 Date July 1949 Scale 1" = 500'

STATE OF WEST VIRGINIA
 DEPARTMENT OF MINES
 OIL AND GAS DIVISION
 CHARLESTON

WELL LOCATION MAP

FILE NO. DOD-193-#3
DOD-194-#4-88

+ Denotes location of well on United States Topographic Maps, scale 1 to 62,500, latitude and longitude lines being represented by border lines as shown.

- Denotes one inch spaces on border line of original tracing.



STATE OF WEST VIRGINIA
DEPARTMENT OF MINES
OIL AND GAS DIVISION

Rotary
Spudder
Cable Tools
Storage

Quadrangle.....

Permit No. DOD-194 DD

WELL RECORD

Oil or Gas Well Oil & Gas
(KIND)

Company P. & M. Oil Company
Address West Union, W. Va.
Farm Marvel Haught Acres 60
Location (waters) Upper Run
Well No. 4 Elev. 882
District South West County Doddridge
The surface of tract is owned in fee by M. Haught
Address Oxford, W. Va.
Mineral rights are owned by Haught
Address.....

Casing and Tubing	Used in Drilling	Left in Well	Packers
Size			Kind of Packer
16			
13			Size of
10			
8 1/4			Depth set
6 5/8			
5 3/16			Perf. top
4 1/2	1745	1745	Perf. bottom
3			Perf. top
2			Perf. bottom
Liners Used			

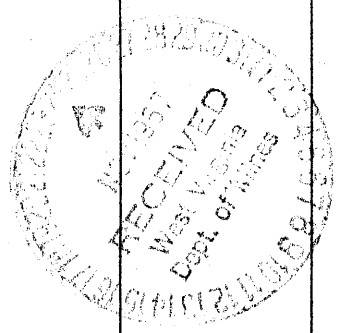
Drilling commenced Sept. 19, 1967
Drilling completed Sept. 26, 1967
Date Shot From To
With
Open Flow /10ths Water in. Inch
/10ths Merc. in. Inch
Volume Cu. Ft.
Rock Pressure lbs. hrs.
Oil bbls., 1st 24 hrs.

Attach copy of cementing record.
CASING CEMENTED 4 1/2 SIZE 300 No. Ft. 10-5-67 Date
Amount of cement used (bags) 20
Name of Service Co. Lawson
COAL WAS ENCOUNTERED AT none FEET INCHES
FEET INCHES FEET INCHES
FEET INCHES FEET INCHES

WELL ACIDIZED (DETAILS).....
WELL FRACTURED (DETAILS) Oct. 12, 67 600 barrels water 26000 pound sand 500 gal acid

RESULT AFTER TREATMENT (Initial open Flow or bbls.) 2 barrel per day ^{MCF} 40 000 open flow
ROCK PRESSURE AFTER TREATMENT 160 HOURS
Fresh Water Feet Salt Water Feet
Producing Sand Depth

Formation	Color	Hard or Soft	Top	Bottom	Oil, Gas or Water	Depth	Remarks
Start drilling at 1394 in			2nd. Salt sand				
2nd Salt sand			1350	1420			
Slate			1420	1493			
3rd Salt sand			1493	1526			
Slate			1526	1574			
Sand			1574	1601			
Slate			1601	1610			
Lime			1610	1622			
Slate			1622	1625			
Big Lime			1625	1721			
Big Injun Sand			1721	1788			
			1746	1750	Gas	70 000	



WEST VIRGINIA DEPARTMENT OF MINES
OIL & GAS DIVISION
W E L L R E C O R D

Permit No. Dod 194
Holbrook Quad.
Company
Address
Farm
Location
Well No.
District
Surface
Mineral
Commenced
Completed
Open flow
Volume
Rock Pressure

P. & M Oil Company
West Union, W. Va.
Marvel Haught Acres 60
Jim Run M. F. Hughes River
4 Elev. 882'
South West Doddridge County
Haught
Marvel Haught, Oxford, W. Va.
Nov. 15, 1949
Jan. 17, 1950
55/10ths W in 1 3/4"
171,000 C. F.
375 lbs. 24 hrs.

Gas Well
CASING & TUBING

	10	70	
	3 1/2	342	
	6 5/8	750	750
	2	1394	1394
		2" Anchor Depth 1386	
		No coal any place	

Slate, Red Rock and Shells	0	800
L. Dunkard	800	848
Big Dunkard	910	950
Gas Sand	962	1017
1st Salt Sand	1085	1125
2nd Salt Sand	1350	
Gas	1388	1394
Total depth		1394
Gas 1388 - 1394		