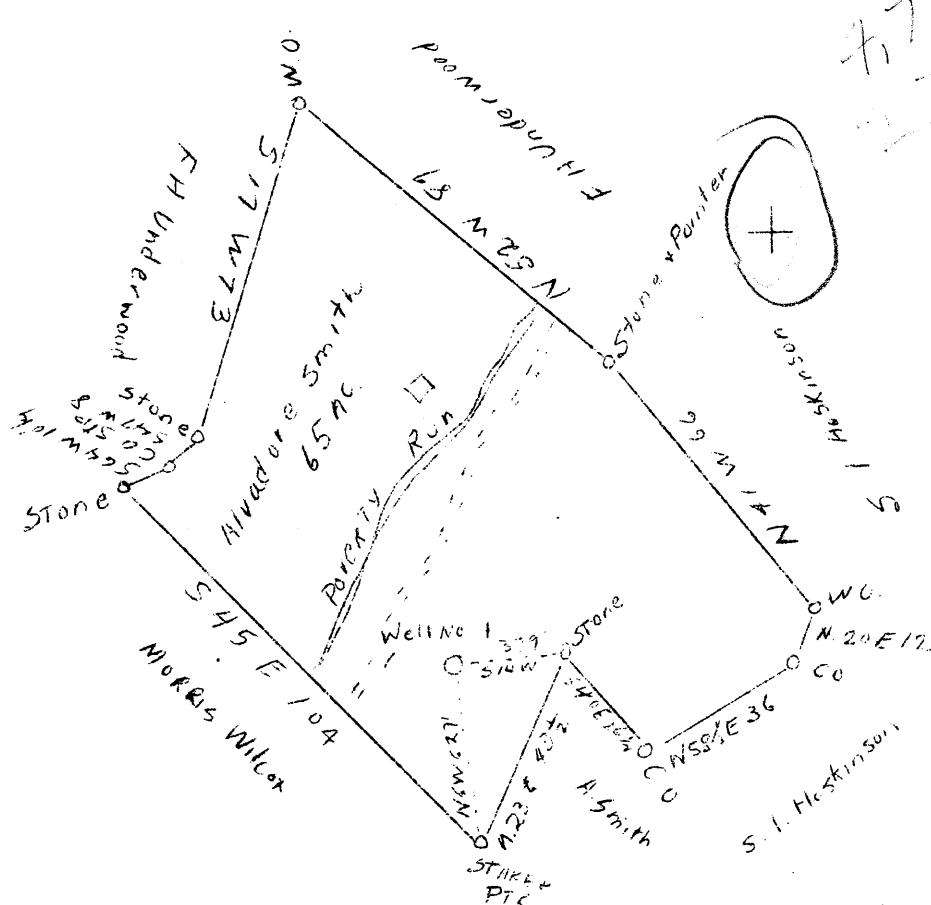


M

Lat. 39° 25'

Long 80° 40'



NEW LOCATIONX

COMPANY	CLIFTON OIL AND GAS CO.
ADDRESS	PARKERSBURGH, W. VA.
FARM	ALVADORE SMITH
TRACT	1 ACRES 65 LEASE NO.
WELL (FARM) NO.	1 SERIAL NO.
ELEVATION (S.L.)	990
QUADRANGLE	CENTERPOINT
COUNTY	DODDRIDGE DIST. GRANT
ENGINEER	J. M. MARTIN
ENGINEER'S REG. NO.	84
FILE NO.	DRAWING NO.
DATE	8/22/46 SCALE 40 POLES - 1"

STATE OF WEST VIRGINIA
 DEPARTMENT OF MINES
 OIL AND GAS DIVISION
 CHARLESTON

WELL LOCATION MAP
 FILE NO. DOD - 170

† DENOTES LOCATION OF WELL ON U.S. TOPOGRAPHIC MAPS, SCALE 1 TO 62,500, LATITUDE AND LONGITUDE LINES BEING REPRESENTED BY BORDER LINES AS SHOWN.

- DENOTES ONE INCH SPACES ON BORDER LINE OF ORIGINAL TRACING.

WEST VIRGINIA DEPARTMENT OF MINES
OIL & GAS DIVISION
W E L L R E C O R D

Permit No. Dod 170
Gassaway Quad.

Gas Well
CASING & TUBING

Company	Clifton Oil & Gas Company			
Address	Parkersburg, W.Va.	10	245	245
Farm	Alvadore Smith Acres 65	8 1/2	1155	1155
Location	Poverty Run	6 5/8	1905	1905
Well No.	1	5 3/16	1917	1917
District	Elev. 990'			
Surface	Grant Doddridge County			
Mineral	Same			Hookwall Packer
Commenced	Same			Size 5 3/16 x 5 3/16
Completed	Oct. 21, 1946			x 6 5/8
Date shot	Jan. 4, 1947			Depth 1917'
Open flow	Apr. 8, 1946	Depth		
Volume	50/10ths M in 1 3/4" orifice			Coal-Bloom at 570'
Fresh Water	601 MCF			
	a little Water at 1500' est, 8 bbls. per day			

Clay	0	20	Gordon Stray	2658	2676
Slate & Red Rock	20	100	Slate & Shells	2676	2696
Slate & Lime	100	290	Gordon Sand	2696	2706
Bluff Sand	290	320	Gas	2698	2704
Slate & Lime	320	570	Total Depth		2708
Pittsburgh Coal Blossom	570	570			
Limestone	570	640	Gas show 1884'		
Sand	640	570			
Lime	670	727			
Slate	727	760			
Red Rock	760	780			
Lime	780	825			
Red Rock	825	840			
Lime	840	865			
Slate	865	900			
Lime	900	945			
Red Rock	945	955			
Slate	955	980			
Lime	980	1005			
Little Dunkard	1005	1010			
Lime and Slate	1010	1055			
Black Slate	1055	1080			
Slate Shells	1080	1140			
Big Dunkard	1140	1165			
Slate	1165	1178			
Lime	1178	1200			
Gas Sand	1200	1238			
Slate Shells	1238	1400			
Sand	1300	1345			
Slate	1345	1385			
1st Salt Sand	1385	1530			
Slate Shells	1530	1550			
2nd Salt Sand	1550	1580			
Slate Shells	1580	1590			
3rd Salt Sand	1590	1630			
Lime and Slate	1630	1647			
Sand	1647	1698			
Slate	1698	1705			
Maxon Sand	1705	1785			
Gas 1st	1733				
Gas 2nd	1776	1778	SLM gas tested 36/10 1" orifice,		
Slate Shells	1785	1810	after blowing open- 48 hrs. tested 10/10		
Lime	1810	1826	W 1" orifice		
Slate	1826	1838			
Little Lime	1838	1865			
Blue Monday	1865	1895			
Big Lime	1895	1945			
Big Injun Sand	1945	2096			
Gas	1958	1960			
Slate & Shells	2096	2106			
Squaw Sand	2106	2125			
Lime Shells & Slate	2125	2245			
Berea Grit	2245	2370			
Slate & Shells	2370	2450			
50' Sand	2450	2490			
Lime & Slate	2490	2658			

1905
 1810
 1733
 1630
 1530
 1460
 2930
 1040