

Latitude 39° 30'

Longitude 80° 35'

J. B. DEWHURST

Surface Owners are
C. Burke Morris
Oral B. Rymer
S. Austin Smith
Clarksburg W. Va.

John Price

Coal owned by
State of West Va.

Wm. B. Hawkins
U. G. Prunty surface

U. G. Prunty
68 3/8

New Location
Drill Deeper
Abandonment

Map N48 S1, E2

Company South Penn Natural Gas Co.
 Address Parkersburg W. Va.
 Farm J. B. Dewhurst
 Tract Acres 1262 Lease No. 10253
 Well (Farm) No. 16 Serial No. _____
 Elevation (Spirit Level) 1231.45 D.F.
 Quadrangle Centerpoint NC
 County Doddridge District McClellan
 Engineer C. Truman Barnett
 Engineer's Registration No. _____
 File No. _____ Drawing No. _____
 Date 1-18-44 Scale 1" = 400'

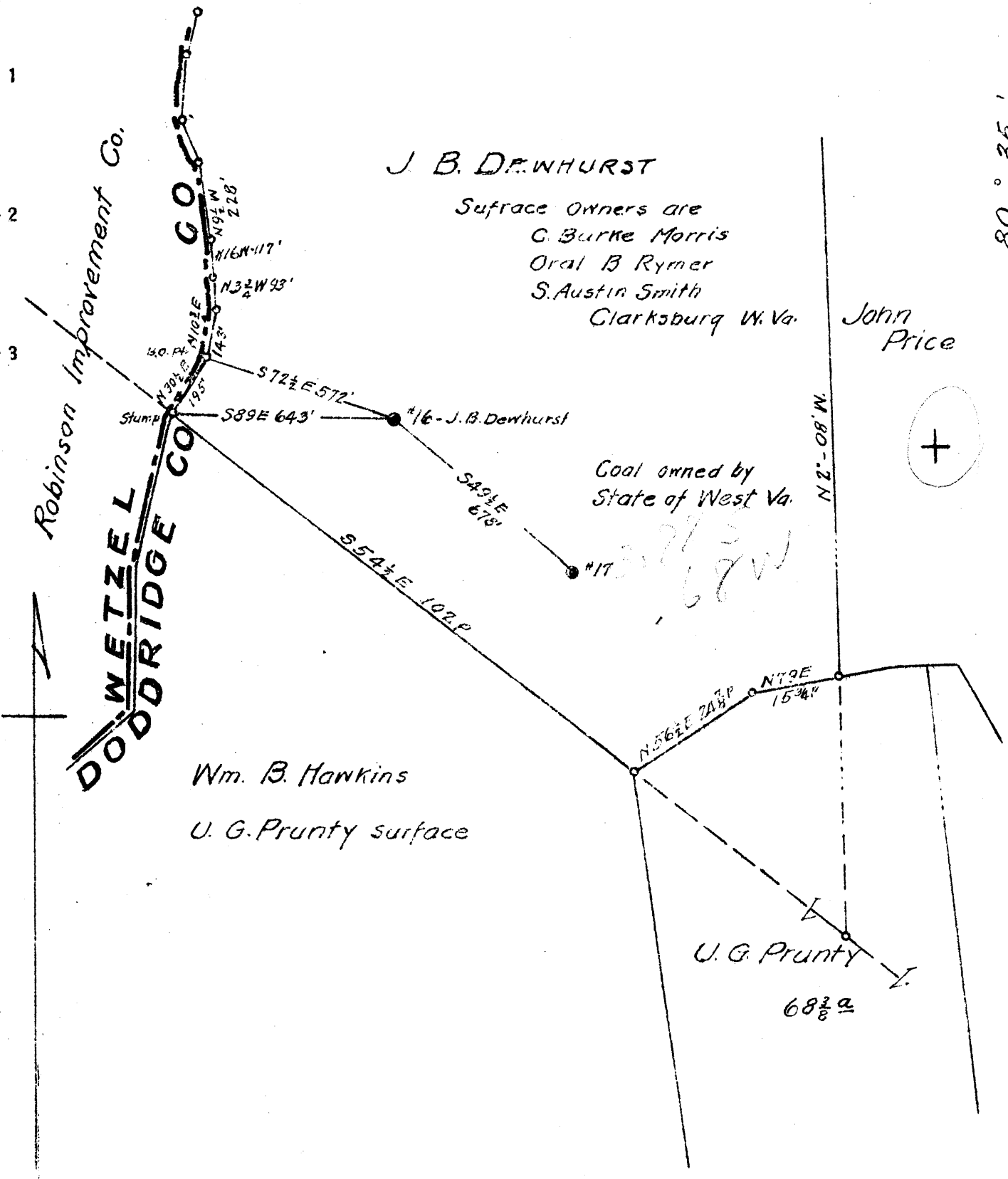
STATE OF WEST VIRGINIA
DEPARTMENT OF MINES
OIL AND GAS DIVISION
CHARLESTON

WELL LOCATION MAP

FILE NO. DOD - 145

+ Denotes location of well on United States Topographic Maps, scale 1 to 62,500, latitude and longitude lines being represented by border lines as shown.

- Denotes one inch spaces on border line of original tracing.



WEST VIRGINIA DEPARTMENT OF MINES
OIL & GAS DIVISION
W E L L R E C O R D

Permit No. Dod 145
Centerpoint Quad.
Company
Address

Gas Well
CASING & TUBING
5 3/16 3020 3020

Farm
Location
Well No.
District
Surface
Mineral
Commenced
Completed
Volume
Rock Pressure
Fresh Water

South Penn Natural Gas Co.
Union Trust Bldg.
Parkersburg, W.Va.
J.B. Dewhurst Acres 1262
Beverlin Run
Drilling Deeper- 16 Elev. 1231.45
McClellan Doddridge County
C. Burke Morris et al, Clarksburg, W.Va.
S.A. Smith et al, Clarksburg, W.Va.
June 28, 1944
July 17, 1944
129,012 C.F.
83 # in 24 hrs.
None

Coal at 927' 85"

DRILLED DEEPER

Pgh Coal	927	935	
D.D. Commenced		2385	
Big Injun	2231	2437	
Slate	2437	2444	
Lime	2444	2456	
Slate	2456	2505	
Lime	2505	2528	
Slate	2528	2534	
Lime	2534	2575	
Slate & Shells	2575	2655	
Slate	2655	2675	
Lime	2675	2728	
Slate	2728	2755	
Sand	2755	2765	
Slate	2765	2778	
Lime, Gritty	2778	2806	
Slate	2806	2845	
Lime	2845	2886	
Slate	2886	2891	
Lime	2891	2897	
Slate	2897	2903	
Sand	2903	2912	
Slate-Shells	2912	2970	
Red Rock	2970	2977	
Slate	2977	2982	
Boulder Sand	2982	3015	
Slate & Shells	3015	3054	
Gordon Sand	3054	3068	Gas 3060-3064 8.8" W in 1" or
Slate	3068	3113	69,960 C.F.
Shells	3113	3121	
Fourth Sand	3121	3129	
Slate	3129	3145	
Lime	3145	3160	
Slate- Shells	3160	3215	
Lime	3215	3226	
Slate	3226	3240	
Lime	3240	3245	
Slate	3245	3257	
Lime	3257	3281	
Slate	3281	3290	
5th Sand Shell	3290	3294	
Slate	3294	3308	
Bayard Sand	3308	3310	Gas 3308-3310 2.5" W 1 1/2" or
Slate & Shells	3310	3326	63,963 C.F.
TOTAL DEPTH		3326	