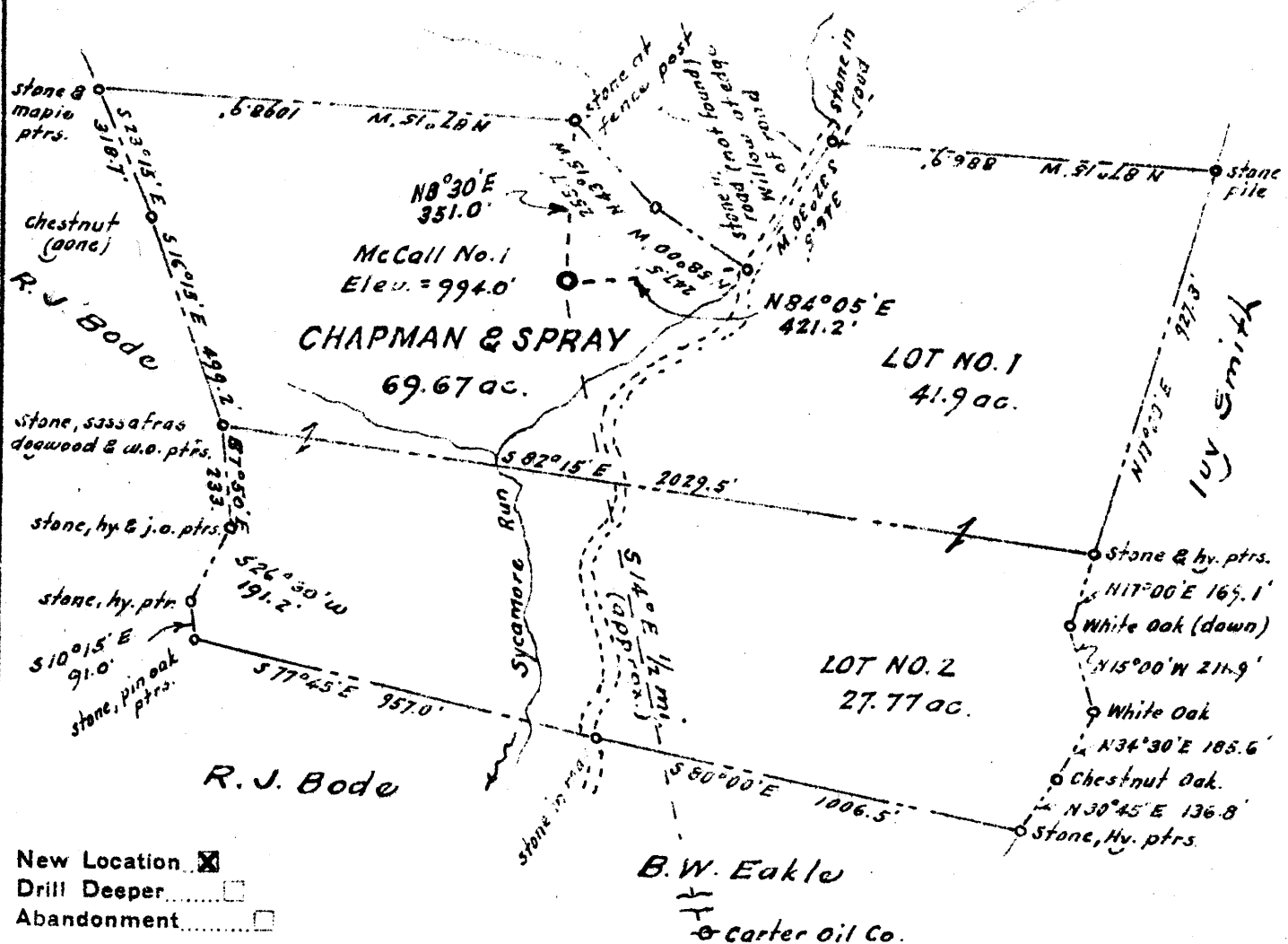


Latitude 39 10

Longitude 80 40

Ivy Smith & Henry Albers

+ 3965  
352



- New Location
- Drill Deeper
- Abandonment

B.W. Eakle  
H  
& Carter Oil Co.

Company **MCCALL DRILLING COMPANY**  
 Address **Keystone Bldg., Pittsburgh, Penna.**  
 Farm **Chapman & Spray**  
 Tract 1 Acres 69.67 Lease No. 1-275  
 Well (Farm) No. 1 Serial No. \_\_\_\_\_  
 Elevation (Spirit Level) 994'  
 Quadrangle Vadis WC  
 County Doddridge District Cove  
 Engineer M.S. Holt, Jr.  
 Engineer's Registration No. 1227  
 File No. \_\_\_\_\_ Drawing No. \_\_\_\_\_  
 Date Sept. 1943 Scale 1 inch = 400 feet

STATE OF WEST VIRGINIA  
DEPARTMENT OF MINES  
OIL AND GAS DIVISION  
CHARLESTON

**WELL LOCATION MAP**  
FILE NO. DOD-143

- + Denotes location of well on United States Topographic Maps, scale 1 to 62,500, latitude and longitude lines being represented by border lines as shown.
- Denotes one inch spaces on border line of original tracing

B.M.  
205

WEST VIRGINIA DEPARTMENT OF MINES  
OIL & GAS DIVISION  
W E L L R E C O R D

Dry Hole  
CASING & TUBING

|                    |                               |                 |                     |
|--------------------|-------------------------------|-----------------|---------------------|
| Permit No. Dod 143 |                               |                 |                     |
| Vadis Quad.        |                               |                 |                     |
| Company            | McCall Drilling Company       |                 |                     |
| Address            | 612 Keystone Bldg., Pgh., Pa. | 10              | 239                 |
| Farm               | Chapman & Spray               | Acres 69.67     | 8 1/2 910           |
| Location           | Sycamore of Fink              |                 | 6 5/8 1848          |
| Well No            | 1-205                         | Elev. --        |                     |
| District           | Cove                          | Dodridge County | No coal encountered |
| Surface            | Chapman & Spray,              | Hurst, W.Va.    |                     |
| Mineral            | Same                          |                 |                     |
| Commenced          | Dec. 6, 1943                  |                 |                     |
| Completed          | Jan. 19, 1944                 |                 |                     |
| Fresh Water        | 45'                           |                 |                     |

|                |      |      |                |      |      |
|----------------|------|------|----------------|------|------|
| Red Rock       | 0    | 40   | Slate & Shells | 2205 | 2375 |
| Lime & Shells  | 40   | 45   | TOTAL DEPTH    |      | 2375 |
| Red Rock       | 45   | 56   |                |      |      |
| Lime           | 56   | 65   |                |      |      |
| Red Rock       | 65   | 75   |                |      |      |
| Lime           | 75   | 90   |                |      |      |
| Sand           | 90   | 95   |                |      |      |
| Lime           | 95   | 105  |                |      |      |
| Sand           | 105  | 115  |                |      |      |
| Red Rock       | 115  | 150  |                |      |      |
| Lime           | 150  | 160  |                |      |      |
| Red Rock       | 160  | 215  |                |      |      |
| Sand           | 215  | 253  |                |      |      |
| Slate          | 253  | 256  |                |      |      |
| Sand           | 256  | 280  |                |      |      |
| Lime           | 280  | 350  |                |      |      |
| Slate          | 350  | 400  |                |      |      |
| Red Rock       | 400  | 410  |                |      |      |
| White Slate    | 410  | 425  |                |      |      |
| Slate          | 425  | 435  |                |      |      |
| Slate - White  | 435  | 460  |                |      |      |
| Sand           | 460  | 488  |                |      |      |
| Slate-White    | 488  | 505  |                |      |      |
| Red Rock       | 505  | 615  |                |      |      |
| Lime           | 615  | 620  |                |      |      |
| Slate          | 620  | 625  |                |      |      |
| Red Rock       | 625  | 655  |                |      |      |
| Lime           | 655  | 715  |                |      |      |
| Slate          | 715  | 745  |                |      |      |
| Sand           | 745  | 755  |                |      |      |
| Slate          | 755  | 760  |                |      |      |
| Red Rock       | 760  | 775  |                |      |      |
| Hard-Sand      | 775  | 820  |                |      |      |
| Slate          | 820  | 910  |                |      |      |
| Lime           | 910  | 970  |                |      |      |
| Slate          | 970  | 1050 |                |      |      |
| Sand           | 1050 | 1060 |                |      |      |
| Slate          | 1060 | 1136 |                |      |      |
| Lime           | 1136 | 1195 |                |      |      |
| Slate          | 1195 | 1225 |                |      |      |
| Sand           | 1225 | 1294 |                |      |      |
| Slate          | 1294 | 1305 |                |      |      |
| Sand           | 1305 | 1345 |                |      |      |
| Slate          | 1345 | 1410 |                |      |      |
| Sand           | 1410 | 1485 |                |      |      |
| Slate          | 1485 | 1541 |                |      |      |
| Sand           | 1541 | 1745 |                |      |      |
| Red Rock       | 1745 | 1750 |                |      |      |
| Sand           | 1750 | 1755 |                |      |      |
| Red Rock       | 1755 | 1776 |                |      |      |
| Slate          | 1776 | 1781 |                |      |      |
| Lime           | 1781 | 1800 |                |      |      |
| Slate          | 1800 | 1805 |                |      |      |
| Sand           | 1805 | 1838 |                |      |      |
| B.Lime         | 1840 | 1895 |                |      |      |
| Big Injun      | 1895 | 1990 |                |      |      |
| Slate & Shells | 1990 | 2035 |                |      |      |
| Gritty Lime    | 2035 | 2205 |                |      |      |

Show Oil 1640

1840  
150  
-----  
1990  
994  
-----  
996