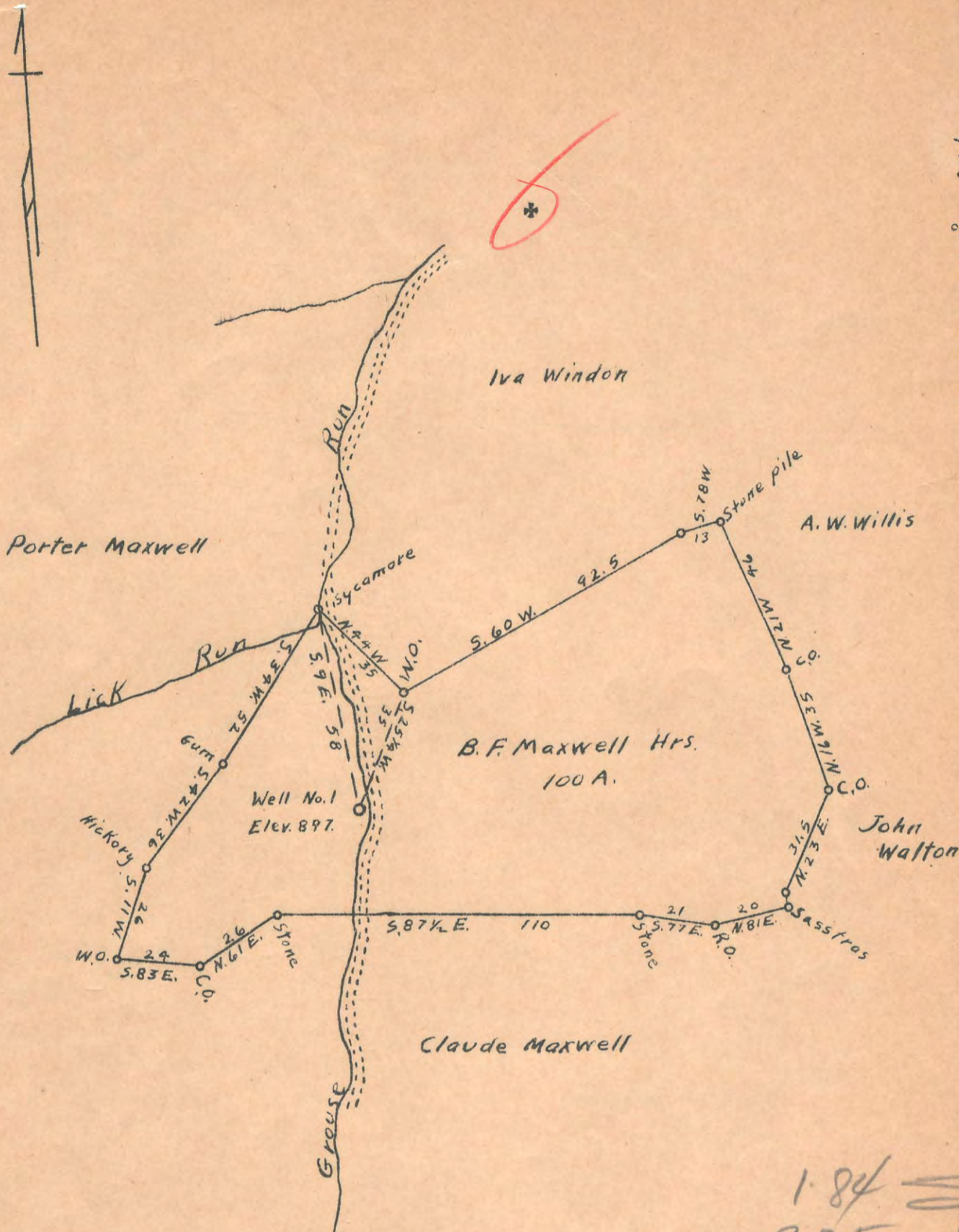


Latitude 39° 15'

Longitude 80° 40'



1.84
3-25 W

- New Location
- Drill Deeper
- Abandonment

Company Tri State Oil & Gas Co. of W. Va.
 Address Box 827, Parkersburg, W. Va.
 Farm B. F. Maxwell Hrs.
 Tract _____ Acres 100 Lease No. _____
 Well (Farm) No. 1 Serial No. _____
 Elevation (Spirit Level) 897.
 Quadrangle Vadis NW
 County Doddridge District New Milton
 Engineer A. K. Westfall
 Engineer's Registration No. Surreyor, Ritchie, Co.
 File No. _____ Drawing No. _____
 Date Oct. 24, 1942 Scale 1" = 40 Poles

STATE OF WEST VIRGINIA
 DEPARTMENT OF MINES
 OIL AND GAS DIVISION
 CHARLESTON

WELL LOCATION MAP

FILE NO. DOD-134

+ Denotes location of well on United States Topographic Maps, scale 1 to 62,500, latitude and longitude lines being represented by border lines as shown.

- Denotes one inch spaces on border line of original tracing

WEST VIRGINIA DEPARTMENT OF MINES
OIL & GAS DIVISION
W E L L R E C O R D

Permit No. Dod 134		Gas Well
Vadis Quad.		CASING & TUBING
Company	Tri State Oil & Gas Co. of W.Va.	
Address	P.O. Box 827, Parkersburg, W.Va.	16 None None
Farm	B.F. Maxwell Heirs Acres 100	13 " "
Location	Grouse Run of Lick Run	10 20' 20'
Well No	1 Elev. 897	8 1/2 330' None
District	New Milton Doddridge County	6 5/8 908' None
Surface	B.F. Maxwell, Heirs, West Union, W.Va.	5 3/16 1687 1687
Mineral	Same	3 None None
Commenced	Nov. 1942-shut down to 8-24-43	2 1885 1885
Completed	Oct. 16, 1943	No liners
Date shot	10-17-43 Depth 1772 to 1782	2 Tub. & Cas. Packers
	with 75# 100% Nitro Jello	5 3/16 x 6 5/8 and
	12/10ths W in 2"	2 x 5 3/16
Open flow	164,000 C.F.	Depth 1363'
Volume	275# 12 Hrs.	1732
Rock Pressure		Perf. top 1430
No oil		" bot 1450
Fresh Water	40'-25' Water;	" top 1775
Salt Water	1170'-- H.F.	" bot 1778
		No coal

Rock	Gr	S	0	40
Rock		S	40	237
Sand	Gr	S	237	267
Slate	Wh	S	267	272
Red Rock		S	272	295
Slate	Wh	S	295	330
Lime	Wh	S	330	370
Slate	Wh	S	370	465
Red Rock		S	465	520
Sand	Gr	M	520	560
Slate	Dk	S	560	600
Red Rock		S	600	620
Slate	Dk	S	620	750
Red Rock		S	750	760
Slate	Dk	S	760	840
Lime	Bk	M	840	860
Slate	Dk	S	860	916
Sand	Gr	Broken	916	930
Slate	Wh	S	930	975
Sand	Wh	M	975	1025
Slate	Wh	S	1025	1034
Sand	Wh	S	1034	1064
Slate	Bk	Shells	1064	1165
Sand	Gr	S	1165	1230
Slate	Br	S	1230	1320
Sand	Wh	M	1320	1340
Slate	Dk	Shell 6	1340	1393
Sand	Wh	S	1393	1491
Sand	Wh	Maxon	1495	1545
Slate	Dk	S	1545	1558
Lime	Bk	H	1558	1610
Red Rock		S	1610	1617
Lime-Little		H	1617	1633
Pencil Cave		S	1633	1639
Sand-Blue Monday		M	1639	1658
Big Lime	Gr	H	1658	1691
Keener Sand	Br	M	1691	1706
Lime	Bk	V.H	1706	1710
Sandy Lime	Gr	H	1710	1730
Lime	Dk	H	1730	1772
Big Injun	Wh	VH	1772	1803
Sand	Limey	H	1803	1809
Lime	Gr	H	1809	1830
Lime	Gr	VH	1830	1848
Lime	Sandy	VH	1848	1850
Sand & Shale	Limey	H	1850	1852
Shale	Black	S	1852	1871

1908

1658
150
1807
1897
911

Gas 1440 50,000 Est.

S.L. 1670'
Oil show 1706 Black
Gas 1712-1716 14,000 C.F.
Gas 1775-1780 115,000 C.F.