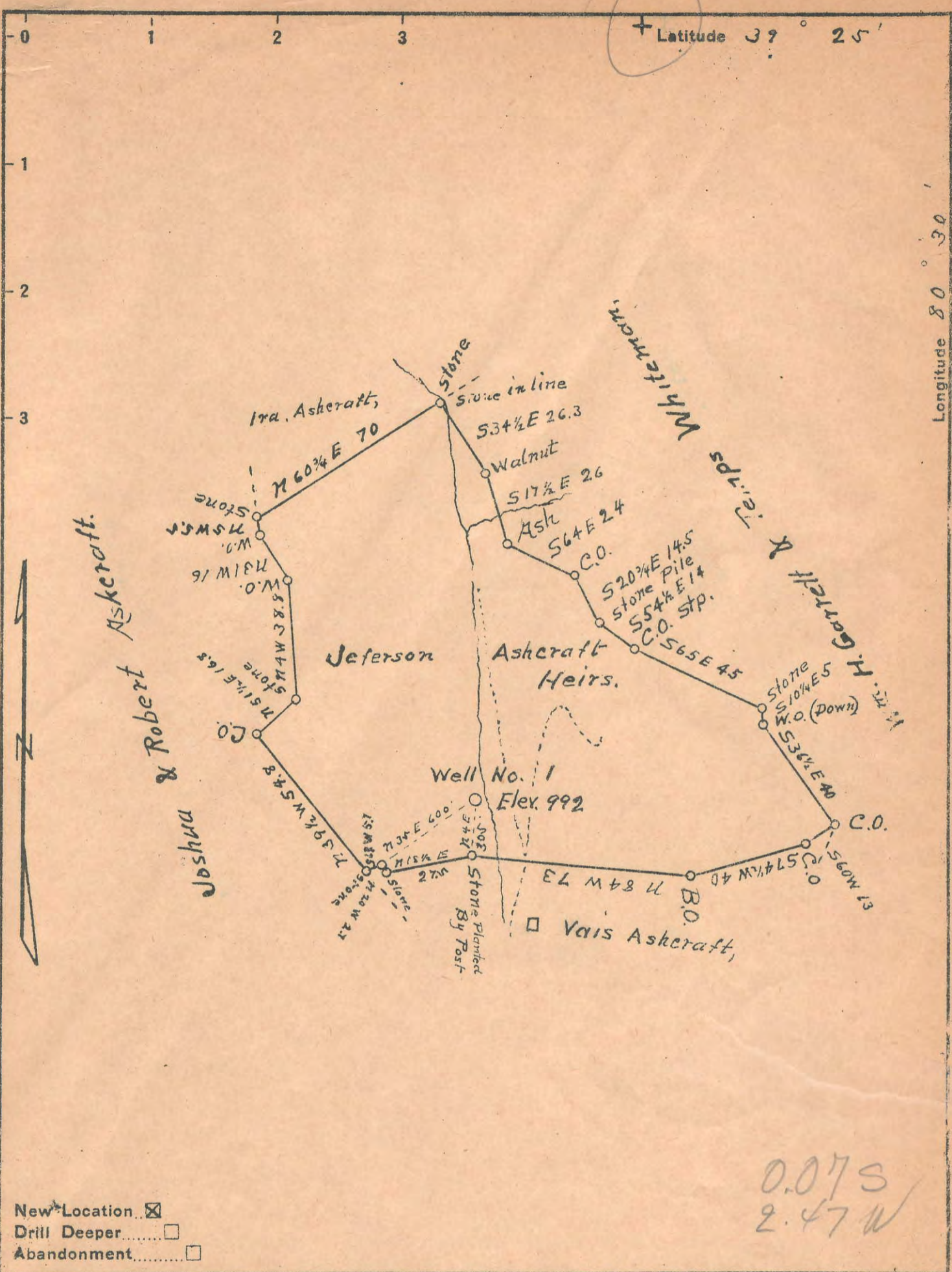


+ Latitude 37° 25'

Longitude 80° 30'



New Location
 Drill Deeper
 Abandonment

0.07 S
2.47 W

Company Coffman Oil & Gas Co.
 Address Salem, W. Va. R. 2.
 Farm Jefferson Ashcraft, Heirs.
 Part of Tract one tract Acres 180 Lease No. _____
 Well (Farm) No. 1 Serial No. _____
 Elevation (Spirit Level) 992
 Quadrangle Centerpoint EC
 County Doddridge District McClellan
 Engineer J M Martin
 Engineer's Registration No. _____
 File No. _____ Drawing No. _____
 Date Oct 24 Scale 40 P = 1"

STATE OF WEST VIRGINIA
 DEPARTMENT OF MINES
 OIL AND GAS DIVISION
 CHARLESTON

WELL LOCATION MAP
 FILE NO. DOD-121

+ Denotes location of well on United States Topographic Maps, scale 1 to 62,500, latitude and longitude lines being represented by border lines as shown.
 - Denotes one inch spaces on border line of original tracing.