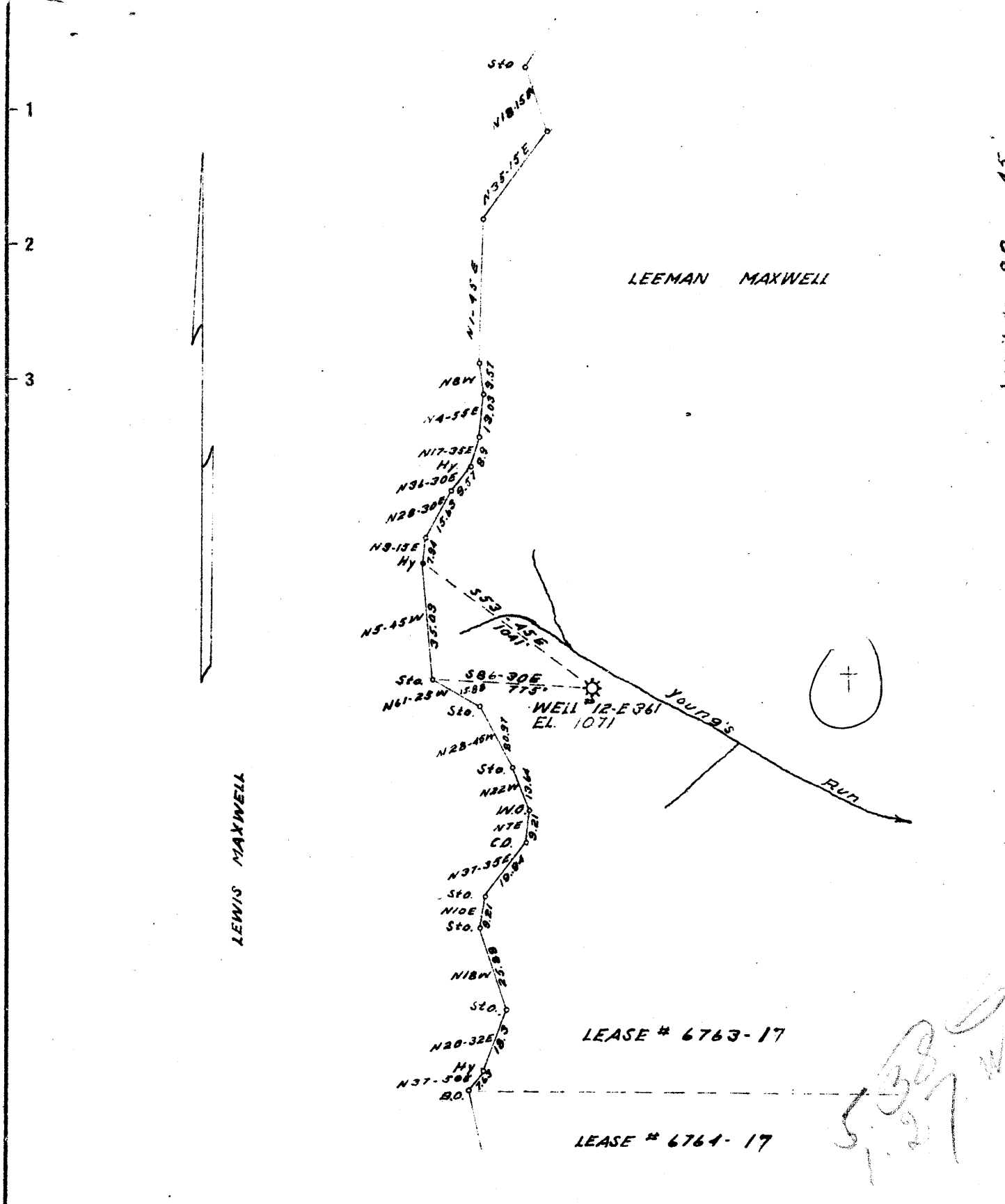


Latitude 39 15'

Longitude 80 45'



LEASE # 6763-17

LEASE # 6764-17

5-38-17

5-27-17

New Location

Drill Deeper

Abandonment

Company	CARNEGIE NATURAL GAS
Address	PITTSBURGH, PA.
Farm	LEEMAN MAXWELL HEIRS
Tract	TWO Acres 2164 Lease No. E.6763-17
Well (Farm) No.	12 Serial No. E-361
Elevation (Spirit Level)	1071
Quadrangle	HOLBROOK N.E.
County	PODDRIDGE District SOUTHWEST
Engineer	R.L. Sweeney
Engineer's Registration No.	
File No.	Drawing No.
Date	7-10-11 Scale 1"=40 RODS

STATE OF WEST VIRGINIA
 DEPARTMENT OF MINES
 OIL AND GAS DIVISION
 CHARLESTON

WELL LOCATION MAP
 FILE NO. DOD-119

+ Denotes location of well on United States Topographic Maps, scale 1 to 62,500, latitude and longitude lines being represented by border lines as shown.

- Denotes one inch spaces on border line of original tracing.

WEST VIRGINIA DEPARTMENT OF MINES
OIL & GAS DIVISION
W E L L R E C O R D

Permit No. Dod-119			
Company	Carnegie Natural Gas Co.		Dry Hole
Address	1014 Frick Bldg., Pittsburg, Pa.		Casing & Tubing
Farm	Leoman Maxwell	Acres 1000	10 " 375
Location	Young's Run		8 1/2 " 1235
Well No	12-1361	Elev. 1071	6 5/8 1851 1851
District	Southwest	<u>Doddridge County</u>	<u>PACKER</u>
Surface	Leoman Maxwell, Jr. & Jane Henderson, West Union, W. Va.		Bottom Hole
Mineral	Same		8 1/2 x 6 5/8
Commenced (Deeper)	Aug. 22, 1941		Depth 1851
Completed	Sept. 12, 1941		

DRILLED DEEPER

Pitts. Coal	815	820	
Little Dunkard	1095	1180	
Big Dunkard	1225	1270	
1st Salt Sand	1575	1640	Gas 1587-1618'
Maxon Sand	1715	1736	
Big Lime	1738	1830	
Big Injun	1830	1890	Gas 1860'
TOTAL DEPTH		1951'	

(Commenced drilling deeper at 1951')			
Slate	Dk	S	1951 2030
Sand	Dk	H	2030 2140 (Gantz)
Slate	Dk	S	2140 2153
Lime	Dk	H	2153 2173
Slate	Dk	S	2173 2225
Sand	Dk	H	2225 2247 (30 foot) - ? Gantz
Slate & Lime			2247 2750
TOTAL DEPTH			2750

WEST VIRGINIA DEPARTMENT OF MINES
OIL & GAS DIVISION
WELL RECORD

Permit No. Dod-119
Holbrook Quad.

Gas Well

Company	Carnegie Natural Gas Co.,	Casing & Tubing	
Address	1014 Frick Building, Pittsburgh, Pa.10		375
Farm	Leeman Maxwell Acres 1,000	8 1/2	1235
Location	Young's Run	2	1951
Well No.	12-361	Elev. 1071'	
District	<u>Southwest - Doddridge County</u>	Packer - Anchor	
Surface & Mineral	Leeman Maxwell, Jr. & Jane Henderson,	Size 8 1/2" x 2	
	West Union, West Virginia	Depth set	1560
Commenced	2-26-13	Coal	815'
Completed	3-26-13	8-22-41 to 9-12-41	
Rock Pressure	260 lbs.	6-5/8	1851 1851
		Packer - Bottom Hole	
		Size 8 1/2" x 6-5/8"	
		Depth set	1851

Pittsburgh Coal	815	820	— <u>1180</u>
Little Dunkard	1095	1180	
Big Dunkard	1225	1270	
1st Salt Sand	1575	1640G.1587-1618	
Maxon Sand	1715	1736	
Big Lime	1738	1830	
Big Injun	1830	1890G.1860	
Total Depth		1951	

COMMENCED DRILLING DEEPER AT 1951 August 22, 1941
Completed September 12, 1941

Slate	dk	s	1951	2030
Sand	dk	h	2030	2140
Slate	dk	s	2140	2153
Lime	dk	h	2153	2173
Slate	dk	s	2173	2225
Sand	dk	h	2225	2247 - Gantz - Berca?
Slate	dk	s	2247	2255
Lime	dk	h	2255	2265
Slate	dk	s	2265	2270
Lime	dk	h	2270	2277
Slate	dk	s	2277	2307
Lime	wh	h	2307	2330
Slate	dk	m	2330	2363
Lime	dk	h	2363	2380
Slate	dk	s	2380	2395
Lime	dk	h	2395	2402
Slate	dk	s	2402	2428
Lime	dk	h	2428	2496
Slate	dk	s	2496	2501
Lime	dk	h	2501	2505
Slate	dk	s	2505	2585
Lime	wh	h	2585	2592
Slate	dk	s	2592	2627
Lime	wh	h	2627	2630
Slate	dk	s	2630	2697
Lime	dk	h	2697	2700
Slate	dk	s	2700	2750
Total Depth				2750

1732
 1851

 1283
 1071

 2152