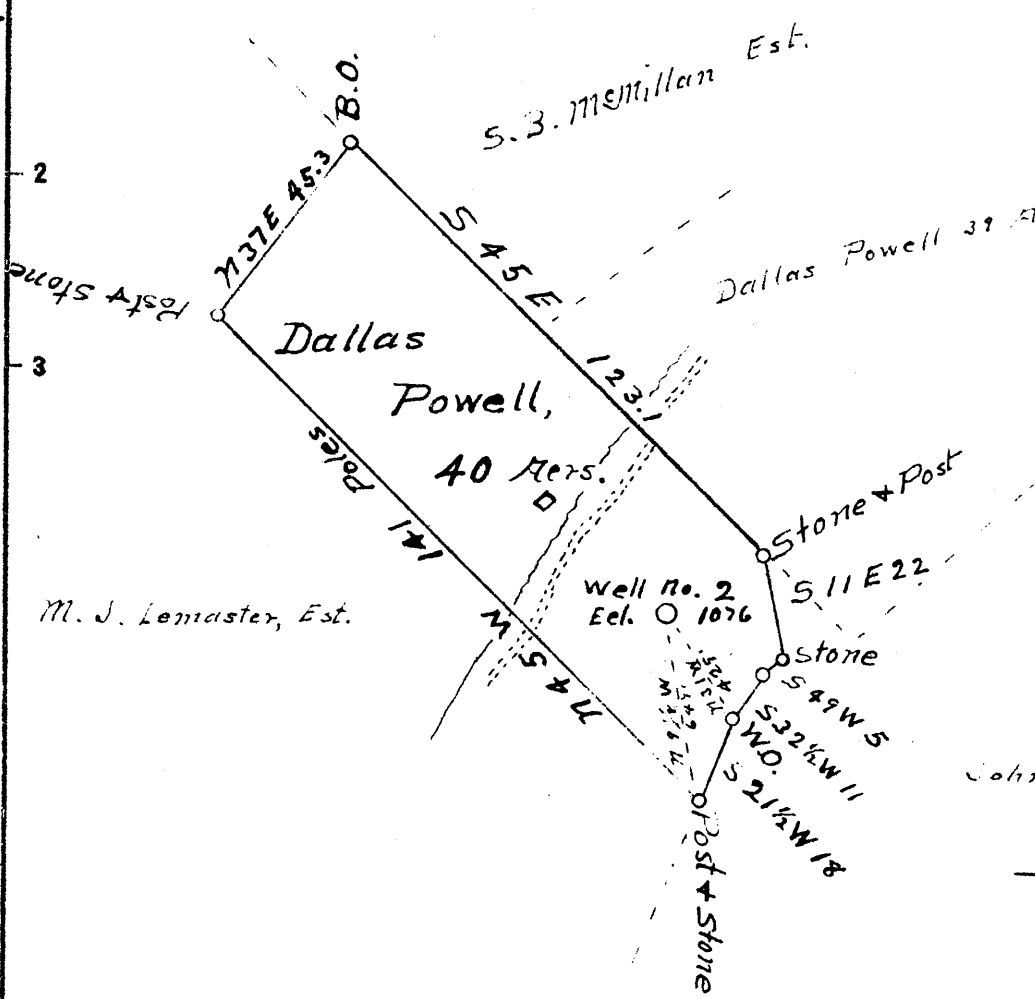


Latitude 39° 25'

Longitude 80° 40'



C. 28 W  
S. 8 S

New Location   
 Drill Deeper   
 Abandonment

Company Clifton Oil & Gas Co.  
 Address Parkersburg, W. Va.  
 Farm Dallas Powell,  
 Tract one Acres 40 Lease No. \_\_\_\_\_  
 Well (Farm) No. 2 Serial No. \_\_\_\_\_  
 Elevation (Spirit Level) 1076  
 Quadrangle Center Point WC  
 County Doddridge District Grant  
 Engineer J. M. Martin,  
 Engineer's Registration No. 84  
 File No. \_\_\_\_\_ Drawing No. \_\_\_\_\_  
 Date June 10 1941 Scale 40 P = 1"

STATE OF WEST VIRGINIA  
 DEPARTMENT OF MINES  
 OIL AND GAS DIVISION  
 CHARLESTON

WELL LOCATION MAP  
 FILE NO. DOD-117

+ Denotes location of well on United States Topographic Maps, scale 1 to 62,500, latitude and longitude lines being represented by border lines as shown.

- Denotes one inch spaces on border line of original tracing.

72740 on CN6 maps

WEST VIRGINIA DEPARTMENT OF MINES  
OIL & GAS DIVISION  
W E L L R E C O R D

Permit No. Dod-117		Gas Well
Company	Clifton Oil & Gas Co.	CASING & TUBING
Address	P.O. Box 1042, Parkersburg, W. Va.	10 719 -
Farm	Dallas Powell Acres 40	8 $\frac{1}{2}$ 1102 1102
Location	--	6.5/8 1892 1892
Well No	2 Elev. 1076	
District	Grant Doddridge County	Coal at 315'--24" ;
Surface	Dallas Powell, West Union, W. Va.	560'--12"
Mineral	Same	
Commenced	July 24, 1941	
Completed	Nov. 5, 1941	
Flow	50/10ths W in 1"	
Volume	84 MCF	
Rock Pressure	90 lbs. --hrs.	
Fresh Water	200'--2 $\frac{1}{2}$ blrs.; 295' Hole Full	

Surface		315	
Mapletown Coal		315	317
Slate		317	330
Lime		330	350
Red Rock Lime		350	560
Pitts. Coal		560	561
Lime	H	561	575
Sand		635	660
Lime		677	694
Red Rock		694	740
Lime		740	780
Red Rock		780	920
Slate & Lime Shell		920	1010
L. Dunkard		1010	1029
Black Slate		1029	1084
B. Dunkard		1084	1148
Slate		1148	1163
Gas Sand		1163	1237
Slate	Dk	1237	1240
First Salt Sand		1240	1350
Slate & Lime Shells		1350	1400
Second Salt Sand		1400	1540
Black Slate		1540	1585
Third Salt Sand		1585	1658
Slate		1658	1670
Maxon		1670	1832
Red Rock		1832	1844
Little Lime		1844	1888
Pencil Cave		1888	1890
Blue Monday		1890	1922
Big Lime		1922	1980
Big Injun		1980	2060
Squaw		2062	2130
Gantz		2150	2300
Fifty'-Shells		2400	2450
Thirty Foot		2550	2580
Gordon Stray		2650	2662
Gordon		2675	2690
TOTAL DEPTH			2701

Gas 1503-1510

Sh. Gas 1987

Sh. Gas 2035

Gas 2683-2685

1503  
 1510  
 1540  
 1585  
 1658  
 1670  
 1832  
 1844  
 1888  
 1890  
 1922  
 1980  
 2060  
 2130  
 2300  
 2450  
 2580  
 2662  
 2690  
 2701