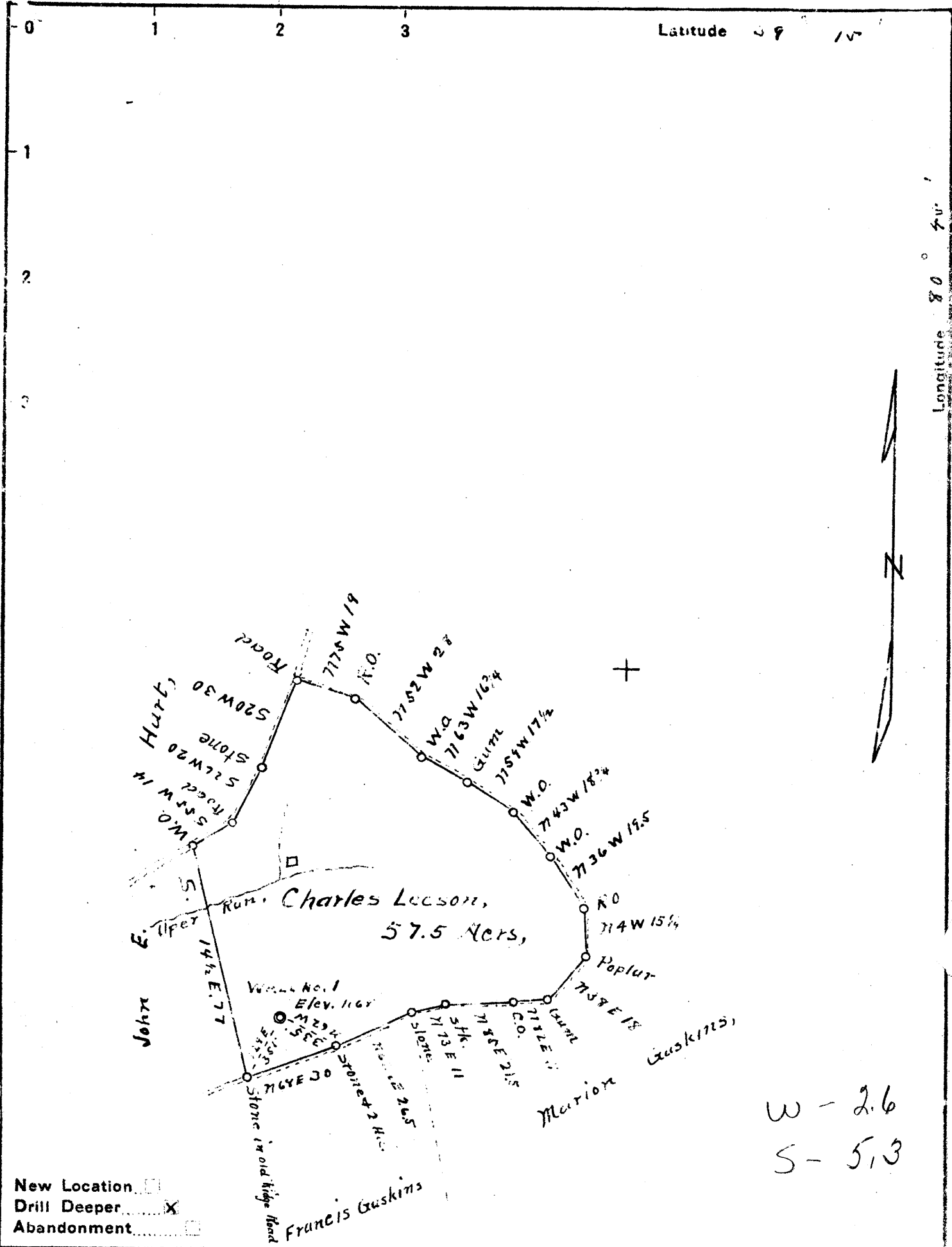


M



W - 2.6
S - 5.3

New Location
 Drill Deeper
 Abandonment

Company C. E. Gribble
 Address West Union, W. Va.
 Farm Charles Lecson
 Tract one Acres 57.5 Lease No. _____
 Well (Farm) No. 1 Serial No. _____
 Elevation (Spirit Level) 1168
 Quadrangle Holbrook, N.E.
 County Doddridge, District Southwest
 Engineer J. M. Martin
 Engineer's Registration No. 84
 File No. _____ Drawing No. _____
 Date Sept 6 1940 Scale 40 Feet = 1 inch

STATE OF WEST VIRGINIA
 DEPARTMENT OF MINES
 OIL AND GAS DIVISION
 CHARLESTON

WELL LOCATION MAP
 FILE NO. DOD-110

+ Denotes location of well on United States Topographic Maps, scale 1 to 62,500, latitude and longitude lines being represented by border lines as shown.

- Denotes one inch spaces on border line of original tracing.

73273 or CN 6 map

WEST VIRGINIA DEPARTMENT OF MINES
OIL & GAS DIVISION
W E L L R E C O R D

Permit No. Dod-110
Holbrook Quad.

Gas Well

Company	C. E. Gribble
Address	West Union, W. Va.
Farm	M. J. Leeson ACRES 57.5
Location	Hughes River
Well No.	1 ELEV. 1168
District	South West - Doddridge County
Surface & Mineral	M. J. Leeson, et al, Oxford, W. Va.
Commenced	Sept. 20, 1940
Completed	Oct. 21, 1940
Open Flow	91/10ths Water in 1-1/2 inch
Volume	161,000 c.f.
Rock pressure	375 lbs. 24 hrs.
Water	None

CASING & TUBING
(No record given)

Drill down			
Started drilling at		2012	
Slate & Shell	2012	2160	
Gantz Sand - hard	2160	2290	
Slate & Shell	2290	2535	
Lime - hard	2535	2560	
Slate&Shell	2560	2587	
Gordon Sand	2587	2592	Gas 2588.5
Slate & Shell	2592	2644	
Pink Rock	2644	2650	
Slate & Shell	2650	2672	
Total Depth		2672	

This well has 6-5/8 casing, as this well was purchased by me I do not know how much casing is in well, no other casing run.