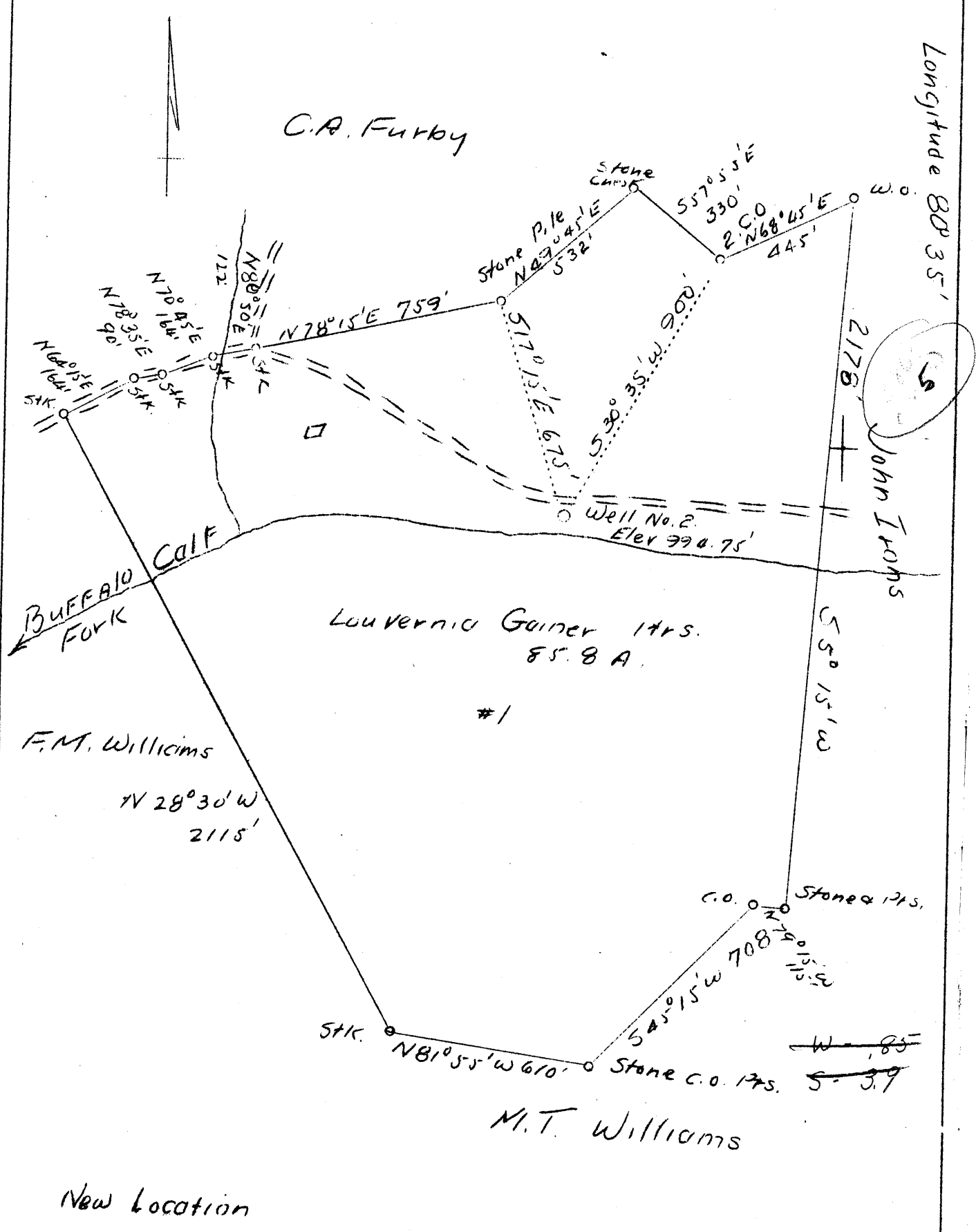


Latitude 39° 20'

Longitude 80° 35'



New Location

Company O.E. Garrett Jr.  
 Address Parkersburgh, W. Va.  
 Farm Louvernia Gainer Hrs.  
 Acres 85.8  
 Well (Farm) No. 2  
 Elevation (SL) 994.75  
 Quadrangle Center Point *SC*  
 County Doddridge  
 District Greenbrier  
 Engineer L.F. Dye  
 Eng. Reg. No. 804  
 Date Nov. 14, 1939  
 Scale 1" = 400'

STATE OF WEST VIRGINIA  
 Department of Mines  
 OIL & GAS DIVISION  
 Charleston  
 WELL LOCATION MAP

File No. Dod-107

x Denotes location of well on U.S. Topographic Maps, scale 1 to 62,500, latitude and longitude lines being represented by border lines as shown.

- Denotes one inch spaces on border line of original tracing.