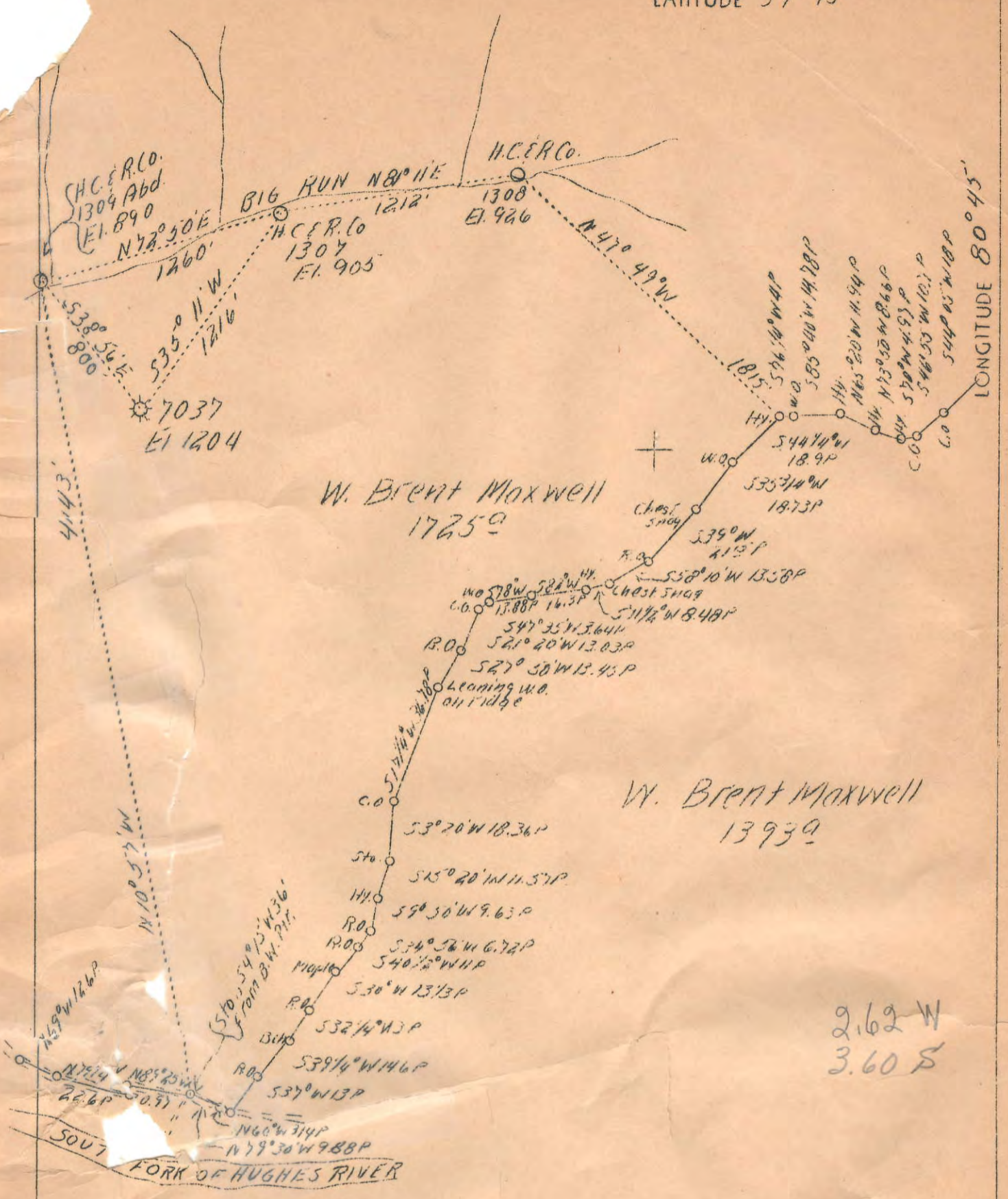


LATITUDE 39° 15'

LONGITUDE 80° 45'



2.62 W
3.60 S

F.B. 659 P 1/2
1.13

Drill Deeper 7037

Company	Hope Natural Gas Co.
Address	Clarksburg, W. Va.
Farm	W. Brent Maxwell
Acres	2400
Lease No.	41998
Well (Farm) No.	-
Serial No.	7037
Elevation (SL)	1204
Quadrangle	Holbrook N.E.
County	Doddridge
District	Southwest
Engineer	W. M. Bowers
Eng. Reg. No.	900
Date	Oct. 19, 1939
Scale	1" = 40 poles

STATE OF WEST VIRGINIA
Department of Mines
OIL & GAS DIVISION
Charleston

WELL LOCATION MAP

File No. Dod. 106

x Denotes location of well on U. S. Topographic Maps, scale 1 to 62,500, latitude and longitude lines being represented by border lines as shown.

- Denotes one inch spaces on border line of original tracing.

Fract 8-7-57
1672

WEST VIRGINIA DEPARTMENT OF MINES

OIL & GAS DIVISION

W E L L R E C O R D

Permit No. Dod-106

Gas Well

Holbrook Quad.

CASING & TUBING

Company	Hobo Natural Gas Co.	10	420	420
Address	Clarksburg, W. Va.	8-1/4	1115	1115
Farm	T. B. Maxwell ACRES 2400	6-5/8	1632	1632
Location	South Fork Hughes River	5-3/16	1905	1905
Well No.	7037 ELEV. 1204			
District	Southwest - Doddridge County			Not cemented
Surface	W. B. Maxwell Mrs. Frank J. Maxwell, Clarksburg, W. Va.			No coal
Mineral	-			
Deepening commenced	9/28/39 - completed 11/17/39			
Open Flow	-			
Volume	not given			
Rock Pressure	-			
Water	-			

Formation Color & Top Base Result Formation Color & Top Base Result

DRILLING DEEPER RECORD

Started drilling deeper at	1736			
Line	blk	h	1742	1780
Red Rock	red	s	1788	1798
Line	gr	h	1798	1808
Slate	drk	s	1808	1812
Line	drk	h	1812	1826
Blue Monday	gr	h	1826	1842
Pencil Cave	drk	s	1842	1850
Big Line	gr	h	1855	1922
Big Injun S		h	1922	2003 G 1955
Slate	gr	s	2003	2053
Total Depth				2053

1955
1736
1798
1808

Fract
8-7-57