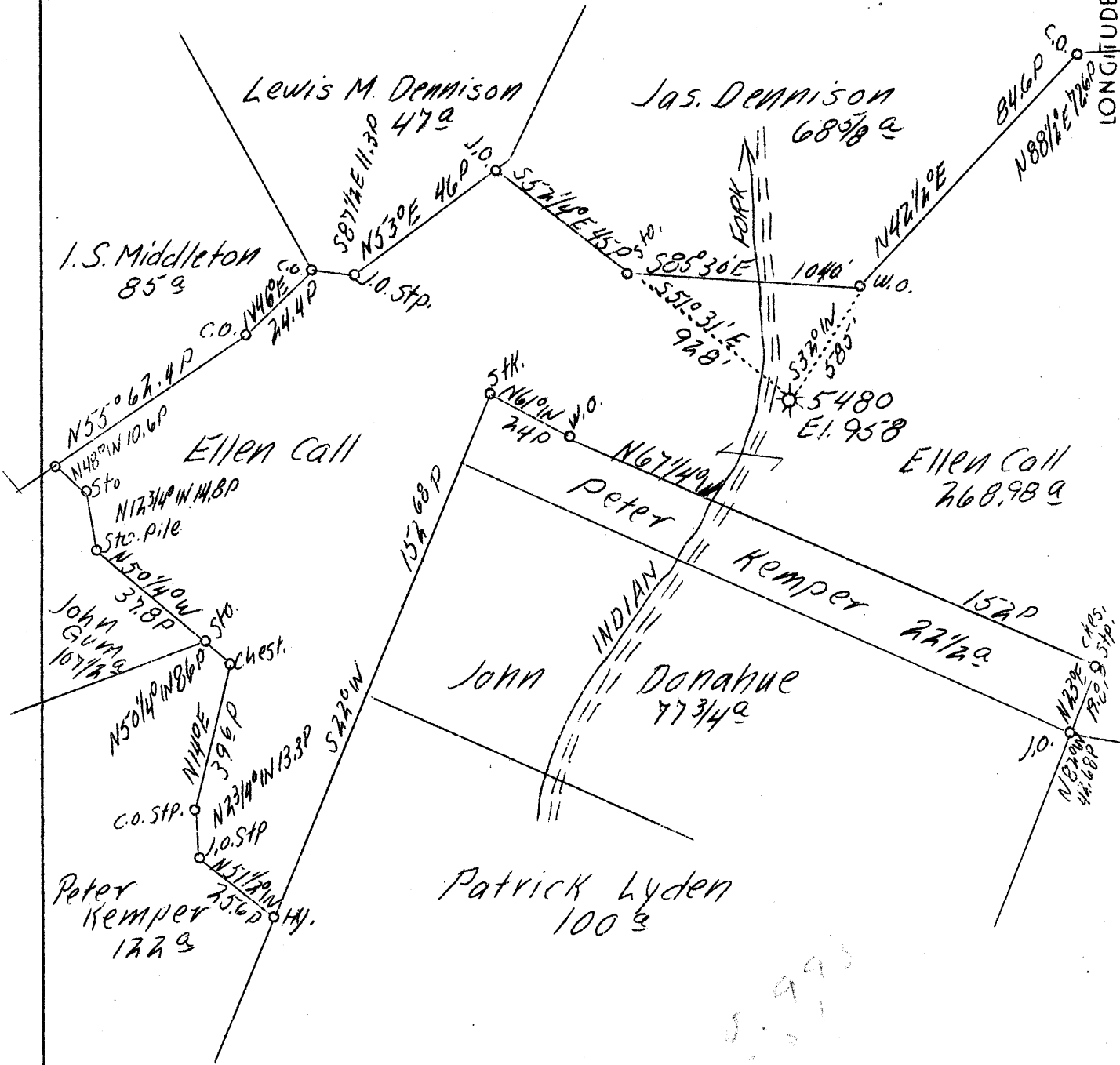


LATITUDE 39° 10'

LONGITUDE 80° 35'



Drill Deeper

F.B. 567 P. 30

Company	Hope Natural Gas Co.
Address	Clarksburg, W. Va.
Farm	Ellen Call
Acres	269
Well (Farm) No.	-
Serial No.	5480
Elevation (SL)	958
Quadrangle	Vadis
County	Doddridge
District	New Milton
Engineer	W. M. Bowers
Engineer's Reg.	No. 900
Date	June 7, 1939
Scale	1" - 40 poles

STATE OF WEST VIRGINIA
 Department of Mines
 OIL & GAS DIVISION
 Charleston

WELL LOCATION MAP

File No. DOD-102

x Denotes location of well on U. S. Topographic Maps, scale 1 to 62,500, latitude and longitude lines being represented by border lines as shown.

- Denotes one inch spaces on border line of original tracing.

797

WEST VIRGINIA DEPARTMENT OF MINES

OIL & GAS DIVISION

WELL RECORD

Permit No. Dod-102

Gas Well

Vadis Quad.

CASING & TUBING

Company	Hope Natural Gas Co.	13	20	20
Address	Clarksburg, W. Va.	10	308	308
Farm	Ellen Call ACRES 269	8-1/4	1464	1464
Location	Indian Fork	6-5/8	1975	1975
Well No.	5480 ELEV. 958	5-3/16	2550	2550
District	New Milton - Doddridge County			
Surface	John Ryan, Wheeling, W. Va.	Not cemented		
DRILLED DEEPER:		COAL ENCOUNTERED:		
Commenced	June 20, 1939	@ 508' 96"		
Completed	July 14, 1939			
Date Shot	6/28/39 - Depth 2606-2613			
Open Flow	52/10ths Water in 1-1/4"			
Volume	84,000 c.f.			
Rock Pressure	135 lbs. 24 hrs.			
Water	-			

Formation Color ^{HT} *TOP Base Result* *Formation Color* ^{HT} *TOP Base Result*

DRILLING DEEPER RECORD

Started drilling deeper at	2021		
Bottom Injun Sand	2098	Gas 2053-2057	
Gantz Sand	2319	2350	Show Oil 2322-2330
Gordon Stray Sand	2606	2613	Gas 2608
Gordon Sand	2633	2644	Gas 2635-2638
Total Depth	2682		