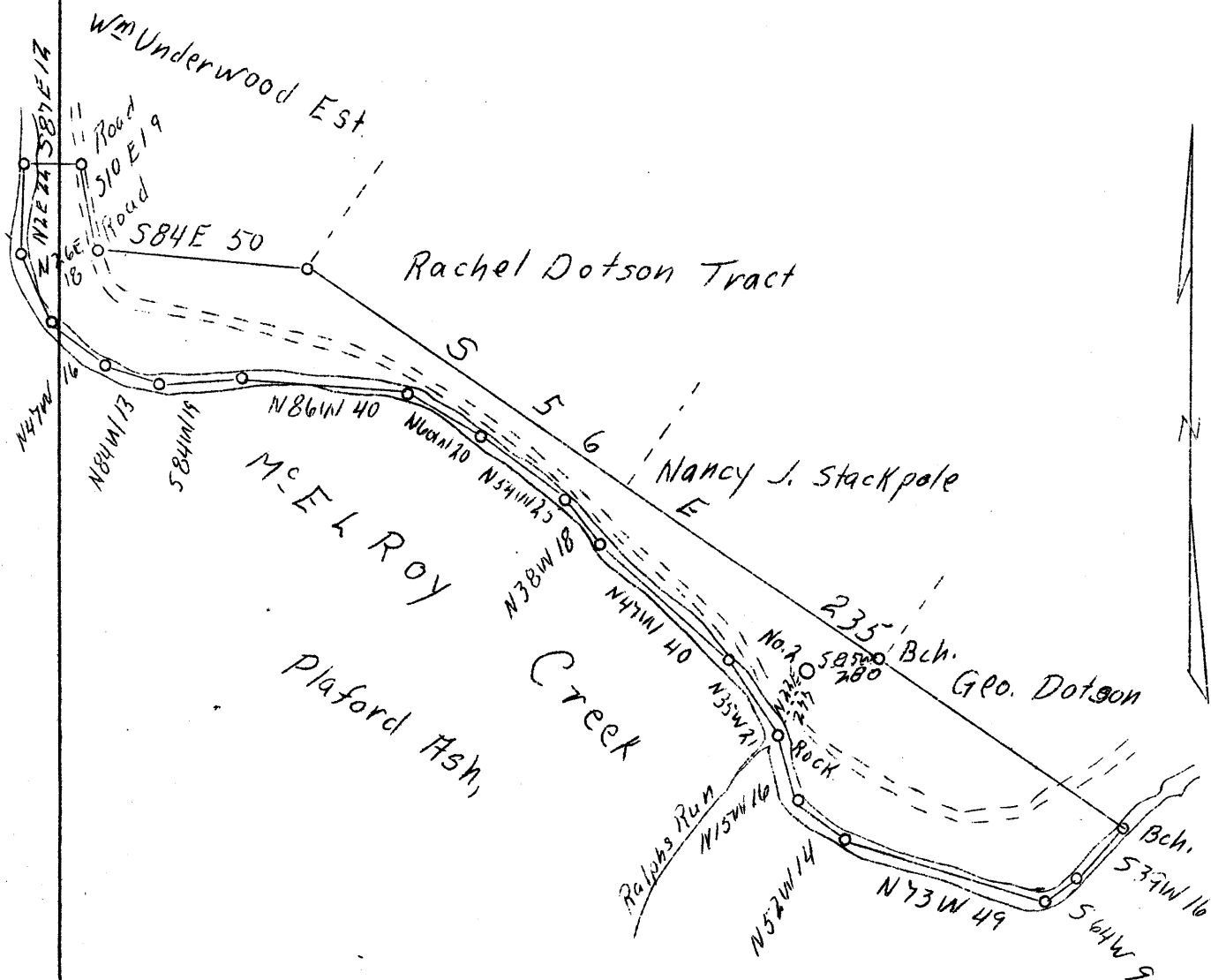


LATITUDE 39° 25'

LONGITUDE 80° 40'



W - 2.2  
S - 1.32

New location

Company	Coffman Oil & Gas Co.
Address	Salem, W. Va. R #2
Farm	Martha J. Smith, et al
Tract	One
Acres	60
Well (Farm) No.	2
Elevation (SL)	851
Quadrangle	Centerpoint <i>WC</i>
County	Doddridge
District	McClellan
Engineer	J. M. Martin
Eng. Reg. No.	84
File No.	-
Date	May 29, 1939
Scale	40 poles - 1"

STATE OF WEST VIRGINIA  
Department of Mines  
OIL & GAS DIVISION  
Charleston

WELL LOCATION MAP

File No. Dod-101

x Denotes location of well on U. S. Topographic Maps, scale 1 to 62,500, latitude and longitude lines being represented by border lines as shown.

- Denotes one inch spaces on border line of original tracing.

WEST VIRGINIA DEPARTMENT OF MINES

OIL & GAS DIVISION

WELL RECORD

Permit No. Dod-101

Gas & Oil Well

Centerpoint Quad.

CASING & TUBING

Company	Coffman Oil & Gas Co.,	10	227	
Address	Salem, W. Va. (Route 2)	8-1/4	1027	
Farm	Martha J. Smith ACRES 60	6-5/8	1883	1883
Location	McElroy Creek	2	2680	2680
Well No.	2 ELEV. 851			
District	McClellan - Doddridge County			
Surface	Playford Ash, Ashley, W. Va.			
Mineral	Martha J. Smith Hrs., Ira Smith Aqt.,			
Address	West Union, W. Va.			
Commenced	July 1, 1939			
Completed	Aug. 1, 1939			
Shot	8/10/39 - Depth 2670			
Open Flow	40/10ths Water in - inch			
Rock Pressure	45 lbs. 24 hrs.			
Oil	2 bbls. 1st 24 hrs.			
Salt Water	Small amount 2668			

Formation Color <sup>Wt</sup> Top Base Result Formation Color <sup>Wt</sup> Top Base Result

Formation	Color	Wt	Top	Base	Result	Formation	Color	Wt	Top	Base	Result
Pg. Coal Blossom			554	555							
Red Rock		s	325	370							
Big Dunkard		m	1025	1388							
Water			1150	1150							
Gas Sand		m	1125	1170							
Sand		h	1330	1360							
Second Salt		h	1405								
Water			1430								
Sand		m	1485	1565							
Sand		h	1713	1730							
Pink Rock		m	1753	1758							
Little Lime		h	1834	1852							
Big Lime		h	1878	1933							
Keoner Sand			1933	2085							
Ind. Sand			--	--							
Gas			1958	1962							
Oil			2022	2026							
Oil			2056	2060							
Gordon Stray			2670	2671							
Total Depth				2705							

Handwritten calculations and notes in the table columns:

- 1878
- 125
- 2003
- 85
- 1152
- 1878
- 85
- 1027

Handwritten note: 95