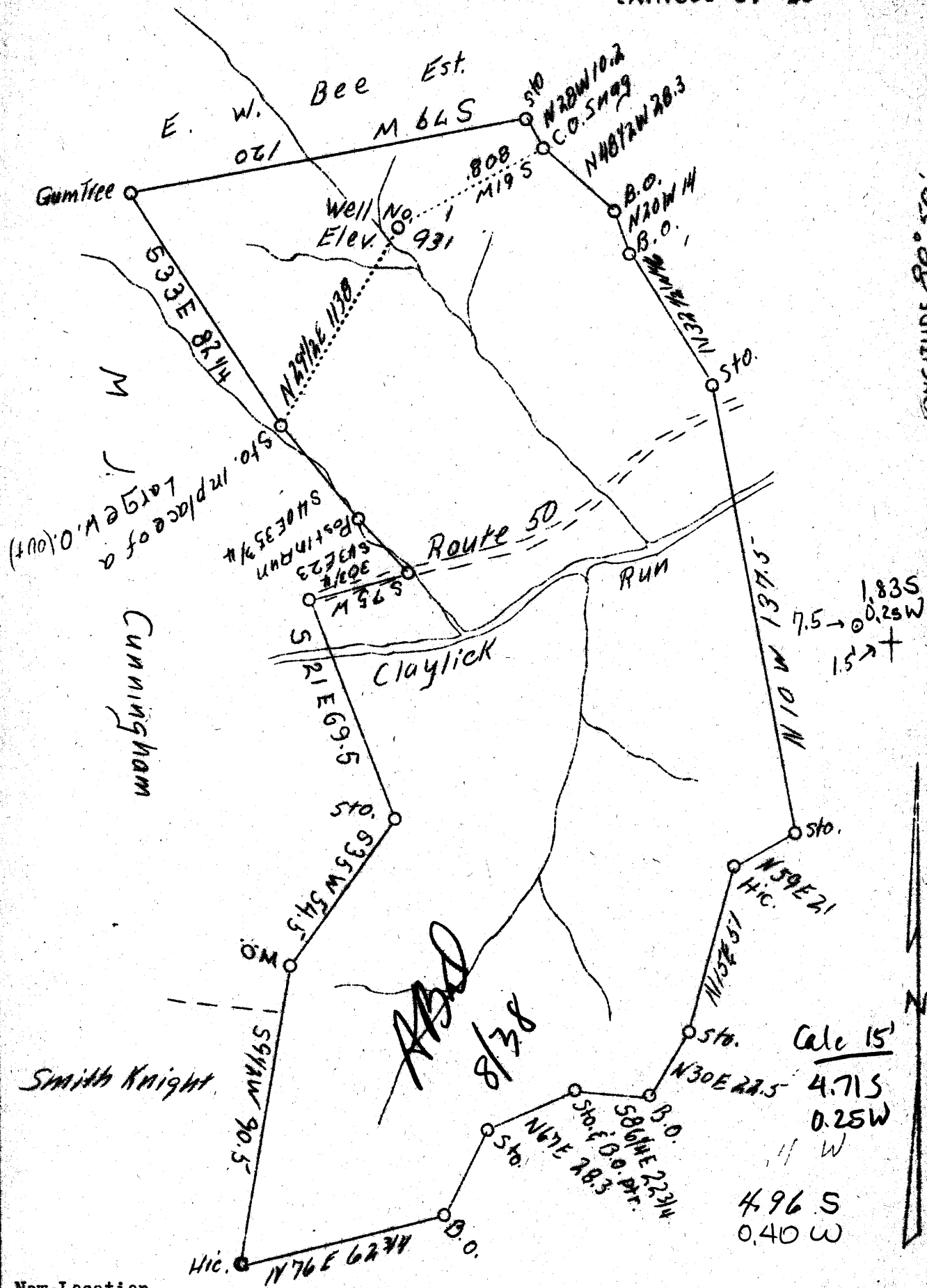


39° 17' 30"
 LATITUDE 39° 20'

LONGITUDE 80° 50'



New Location

Company	W. D. Gribble
Address	West Union, W. Va.
Farm	County Infirmary Farm
Tract	One
Acres	273
Well (Farm) No.	1
Elevation (SL)	931
Quadrangle	West Union SC
County	Doddridge
District	Central
Engineer	J. M. Martin
Eng. Reg. No.	84
Date	May 15, 1939
Scale	40 poles - 1"

STATE OF WEST VIRGINIA
 Department of Mines
 OIL & GAS DIVISION
 Charleston

WELL LOCATION MAP

File No. Med-99

* Denotes location of well on U. S. Topographic Maps, scale 1 to 62,500, latitude and longitude lines being represented by border lines as shown.

- Denotes one inch spaces on border line of original tracing.

STATE OF WEST VIRGINIA
DEPARTMENT OF MINES
OIL AND GAS DIVISION

WELL RECORD

Permit No. DOD-99

Oil or Gas Well DRY
(Kind)

Company W.D. GRIBBLE
Address WEST UNION, W.VA.
Farm DODDRIDGE COUNTY Acres 273
Location (waters) Clay Lick Run
Well No. 1 Elev. 931
District Central County Doddridge
The surface of tract is owned in fee by Doddridge County
Address West Union, W.Va.
Mineral rights are owned by Doddridge County
Address West Union, W.Va.
Drilling commenced 12th day of June 1939
Drilling completed 22 day of August 1939
Date shot..... Depth of shot.....
Open Flow /10ths Water in..... Inch
/10ths Merc. in..... Inch
Volume..... Cu. Ft.
Rock Pressure..... lbs..... hrs.
Oil..... bbls., 1st 24 hrs.
Fresh water 525 feet..... feet
Salt water 1452 feet..... feet

Casing and Tubing	Used in Drilling	Left in Well	Packers
Size			
16			Kind of Packer.....
13			
10	422	422	Size of.....
8 1/4	947	947	
6 5/8	1501	1501	Depth set.....
5 3/16			
3			Perf. top.....
2			Perf. bottom.....
Liners Used.....			Perf. top.....
			Perf. bottom.....

CASING CEMENTED..... SIZE..... No. FT..... Dat.....
COAL WAS ENCOUNTERED AT 1101 FEET..... INCHES
..... FEET..... INCHES..... FEET..... INCHES
..... FEET..... INCHES..... FEET..... INCHES

Formation	Color	Hard or Soft	Top	Bottom	Oil Gas or Water	Depth Found	Remarks
Soil rock				16			
Slate shell			16	215			
Sand white			215	242			
Red rock			242	275			
Slate shell			275	350			
Red Rock			350	375			
Slate shell			375	490	122' - 1"		
Sand white			490	570	Water	525	5 B. Per Hr
Slate shell			570	640			
Lime		hard	640	670			
Slate shell			670	710			
Lime and sand			710	800	947' - 8"		
Slate and shell			800	952			
Pink rock			952	967			
Slate and shell			967	1250	1501' - 6 3/4"		
Sand Black			1250	1483			
Sand		hard	1483	1583	Water	1488	Hole full
Slate and shell			1583	1640			
Lime Black		hard	1640	1655			
Maxon Sand			1655	1720	Dry		
Slate and Shell			1720	1775			
Lime Black		hard	1755	1865			
Slate and Shell			1865	1900			
Lime and slate			1900	1909			
Little Lime			1909	1923			
Slate			1923	1931			
Blue Monday			1931	1944			
Big Lime			1952	2040			
Injun Sand			2040	2075	Dry		
Slate and Shell			2075	2210			
Gantz Sand			2210	2385			
Slate and shell			2385	2660			
Gordon Stray			2660	2664			
Gordon			2682	2684			
Slate and Shell			2684	2845	Total Depth		

