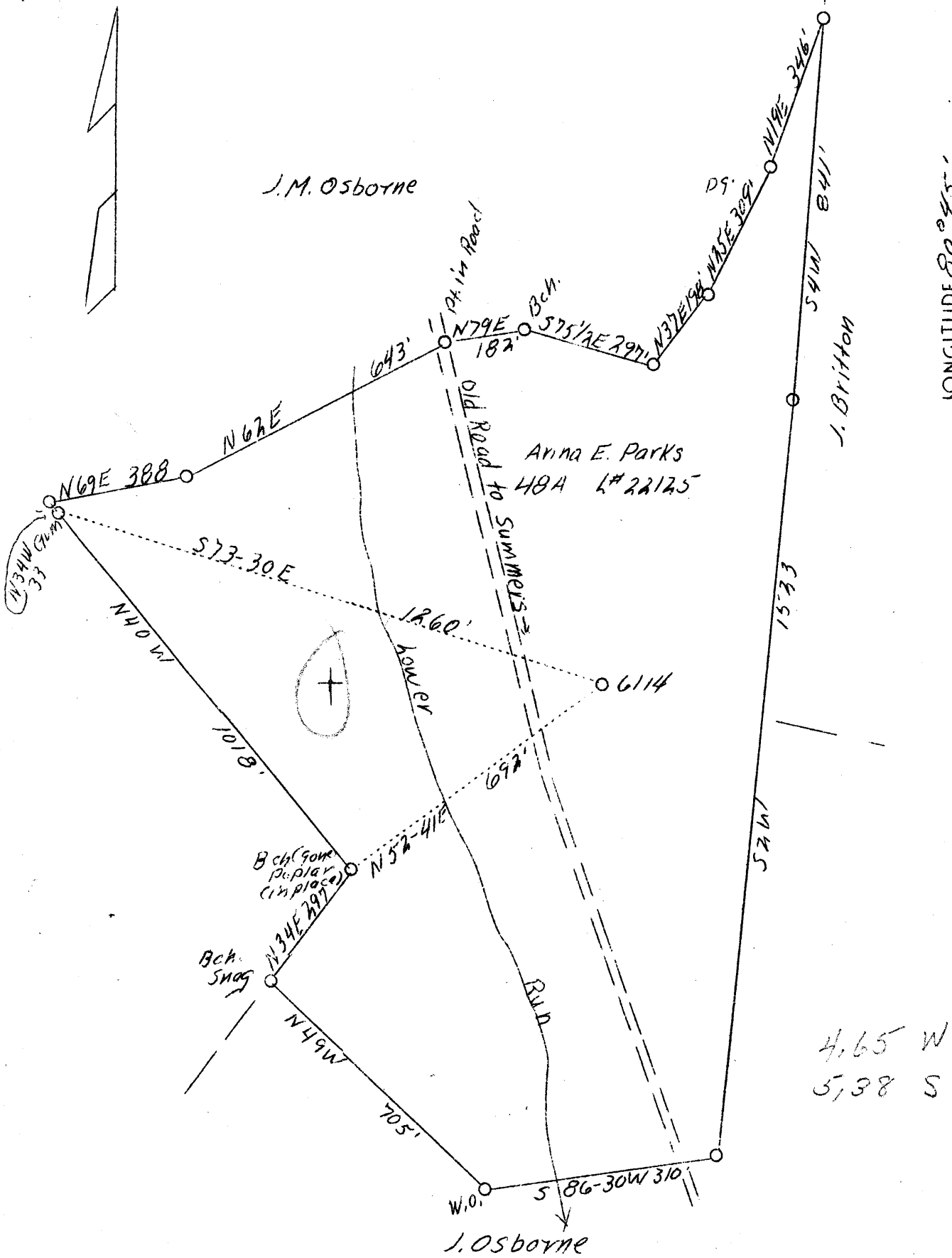


LATITUDE 39° 15'

LONGITUDE 80° 45'



4.65 W
5.38 S

New Location

Company	Pittsburgh & W. Va. Gas Co.	STATE OF WEST VIRGINIA
Address	Union Bank, Clarksburg, W. Va.	Department of Mines
Farm	Anna F. Parks	OIL & GAS DIVISION
Acres	48	Charleston
Lease No.	22125	
Well (Farm) No.	1	WELL LOCATION MAP
Serial No.	6114	File No. <u>Flod-98</u>
Elevation (SL)	991 V.A.	
Quadrangle	Holbrook N. E. 3-2 NC	
County	Doddridge	
District	Southwest	
Engineer	Paul W. Cunningham	x Denotes location of well on U. S. Topographic Maps, scale 1 to 62,500, latitude and longitude lines being represented by border lines as shown.
Eng. Reg. No.	-	- Denotes one inch spaces on border line of original tracing.
Date	May 11, 1939	
Scale	1" = 30'	

WEST VIRGINIA DEPARTMENT OF MINES

OIL & GAS DIVISION

WELL RECORD

Permit No. Dod-93

Gas Well

Holbrook N. E. Quad.

CASING & TUBING

Company	Pittsburgh & W. Va. Gas Co.	13 Wood	10
Address	Clarksburg, W. Va.	10	325 325
Farm	Anna E. Parks, et al ACRES 49	8-1/4	1006 1006
Location	Holbrook N/E 3-2	6-5/8	1763 1763
Well No.	6114 ELEV. 991	3	1885 1885
District	Southwest - Doddridge County		
Surface & Mineral	Anna E. Parks, et al; Oxford, W.Va.	Packer - Anchor	
Commenced	June 27, 1939	Size - 8-1/4 x 6-5/8	
Completed	July 28, 1939	Depth set - 1761	
Date shot	7/31/39 - Depth 1844-1850	PACKER -	
Open Flow	39/10ths Water in 1-1/2"	Size - 6-5/8 x 3	
Volume	130,000 c.f.	Depth set - 1792	
Rock Pressure	688 lbs. 65 hrs.		
Fresh Water	130 - 210	COAL ENCOUNTERED:	
Salt Water	1624	Feet	Inches
		717	12

Formation Color ^{Har} Top Base Result Formation Color ^{Har} Top Base Result

Soil	red	op	0	6		Slate	drk	s	1582	1612	
Sand	brn	h	6	44		3rd Salt S	wh	h	1612	1641	HFV 1624
Red Rock	red	s	44	104		Slate	blk	s	1641	1662	
Lime	wh	h	104	118		Lime	drk	h	1662	1670	
Sand	wh	h	118	148	W 130	Sand	wh	h	1670	1678	
Slate	wh	s	148	165	1/4 blr hr	Slate	blk	s	1678	1687	
Red Rock	red	s	165	183		Lime	blk	h	1687	1714	
Lime	wh	op	183	235	W 210	Maxon Sand	wh	h	1714	1733	
Red Rock	red	s	235	248	1 blr hr	Slate	wh	s	1733	1737	
Lime	wh	op	248	264		Little Lime	drk	h	1737	1748	
Slate	wh	s	264	275		Slate	wh	s	1748	1750	
Lime	wh	h	275	290		Big Lime	wh	h	1750	1834	SL 1763
Red Rock	red	s	290	330		Big Injun	wh	h	1834	1879	Gas at
Lime	gr	op	330	382							1843-49
Slate	wh	s	382	395							6/10 W 2"
Lime	wh	h	395	415							SL 1849
Red Rock	red	s	415	423		Slate	wh	s	1879	1885	
Slate-Shells	wh	hs	423	520		Total Depth					1885
Red Rock Shells	wh	hs	520	628							
Lime	wh	h	628	668							
Red Rock	red	s	668	675							
Slate	wh	s	675	717							
Coal	blk	s	717	718							
Lime	wh	op	718	748							
Red Rock	red	s	748	774							
Slate	wh	s	774	828							
Big Dunkard	wh	h	828	908	Sh. G&O 886	SL 911					
Slate	blk	s	908	922							
Sand	wh	op	922	940							
Slate	wh	s	940	967							
Lime	blk	op	967	1012							
Slate&Shells	blk	hs	1012	1060							
Gas Sand	wh	h	1060	1119							
Slate	wh	s	1119	1121							
Sand	wh	h	1121	1154							
Slate	wh	s	1154	1166	Sh. G&O	1180					
Sand	wh	h	1166	1198							
Slate	blk	s	1198	1303							
Lime	drk	op	1303	1338							
Slate-Shells	drk	hs	1338	1381							
Lime	drk	h	1381	1392							
1st Salt S	wh	h	1392	1427							
Slate	blk	s	1427	1435							
Sand	wh	h	1435	1480							
Slate	blk	s	1480	1495							
2nd Salt S	wh	h	1495	1521							
Slate	blk	s	1521	1555							
Lime	drk	op	1555	1582							

Handwritten notes and calculations:
 1750
 1740
 1730
 1720
 1710
 1700
 1690
 1680
 1670
 1660
 1650
 1640
 1630
 1620
 1610
 1600
 1590
 1580
 1570
 1560
 1550
 1540
 1530
 1520
 1510
 1500
 1490
 1480
 1470
 1460
 1450
 1440
 1430
 1420
 1410
 1400
 1390
 1380
 1370
 1360
 1350
 1340
 1330
 1320
 1310
 1300
 1290
 1280
 1270
 1260
 1250
 1240
 1230
 1220
 1210
 1200
 1190
 1180
 1170
 1160
 1150
 1140
 1130
 1120
 1110
 1100
 1090
 1080
 1070
 1060
 1050
 1040
 1030
 1020
 1010
 1000
 990
 980
 970
 960
 950
 940
 930
 920
 910
 900
 890
 880
 870
 860
 850
 840
 830
 820
 810
 800
 790
 780
 770
 760
 750
 740
 730
 720
 710
 700
 690
 680
 670
 660
 650
 640
 630
 620
 610
 600
 590
 580
 570
 560
 550
 540
 530
 520
 510
 500
 490
 480
 470
 460
 450
 440
 430
 420
 410
 400
 390
 380
 370
 360
 350
 340
 330
 320
 310
 300
 290
 280
 270
 260
 250
 240
 230
 220
 210
 200
 190
 180
 170
 160
 150
 140
 130
 120
 110
 100
 90
 80
 70
 60
 50
 40
 30
 20
 10
 0

Handwritten notes:
 900
 530
 110

FORMATIONS

FORM: O 32-5170

NAME	TOP	BOTTOM	OIL	GAS	WATER	REMARKS
Soil- Red - Open	0	6				
Sand-Brown- Hard	6	14				
Red Rock-Red-Soft	14	104				
Lime-Gritty-Hard	104	113			130	1/4 Bail per hour
Sand - White-	113	148				
Slate- " Soft	148	165				
Red Rock-Red- "	165	183				
Lime - White- Open	183	235			210	1-13" bail per hour
Red Rock-Red - Soft	235	248				
Lime - White - Open	248	264				
Slate - " - Soft	264	275				
Lime - " Hard	275	290				
Red Rock- Red - Soft	290	330				
Lime - White- Open	330	382				
Slate - White- Soft	382	395				
Lime- " Hard	395	415				
Red Rock-Red - Soft	415	423				
Slate & Shell-W-H & S	423	520				
Red Rock& ShellR.H&S	520	628				
Lime - White - Hard	628	668				
Red Rock- Red - Soft	668	675				
Slate-White - "	675	717				
COAL - Black - Soft	717	718				
Lime - White - Open	718	748				
Red Rock- Red - Soft	748	774				
Slate - White - "	774	828				
BIG DUNKARD-White*-Hard	828	908	886	886		Not enough to test Steel line run at 911'
Slate - Black - Soft	908	922				
Sand - White - Open	922	960				
Slate - White - Soft	940	967				
Lime - Black - Open	967	1012				
Slate-Shell-Black-H&S	1012	1060				
GAS SAND-White- Hard	1060	1119				
Slate - " Soft	1119	1121				
Sand - " Hard	1121	1154				
Slate - " Soft	1154	1166				
Sand - " Hard	1166	1198	1180	1180		Showing
Slate - Black - Soft	1198	1303				
Lime -Gritty-Dark Op.	1303	1338				
Slate & Shell-" H&S	1338	1381				
Lime - Dark - Hard	1381	1392				
1st.Salt-White- "	1392	1427				
Slate - Black - Soft	1427	1435				
Sand - White- Hard	1435	1480				
Slate - Black - Soft	1490	1495				
2nd. Salt-White -Hard	1495	1521				
Slate - Black - Soft	1521	1555				
Lime - Dard - Open	1555	1582				
Slate - " Soft	1582	1612				
3rd.Salt White-Hard	1612	1641				1624-Salty - Hole full
Slate - Black -Soft	1641	1662				
Lime - Dard - Hard	1662	1670				
Sand - White - "	1670	1678				
Slate - Black -Soft	1678	1687				
Lime - " Hard	1687	1714				
MAXSON SAND-White-H	1714	1733				
Slate - White- Soft	1733	1737				
LITTLE LIME-Dark-Hard	1737	1748				
Slate- White - Soft	1748	1750				
BIG LIME -White-Hard	1750	1834				Steel line run at 1763
BIG INJUN " "	1834	1879		1843-1849 (6/10-W-2" PT)		" 1849
Slate- " Soft	1879	1885				(Steel line)
TOTAL DEPTH		1885				