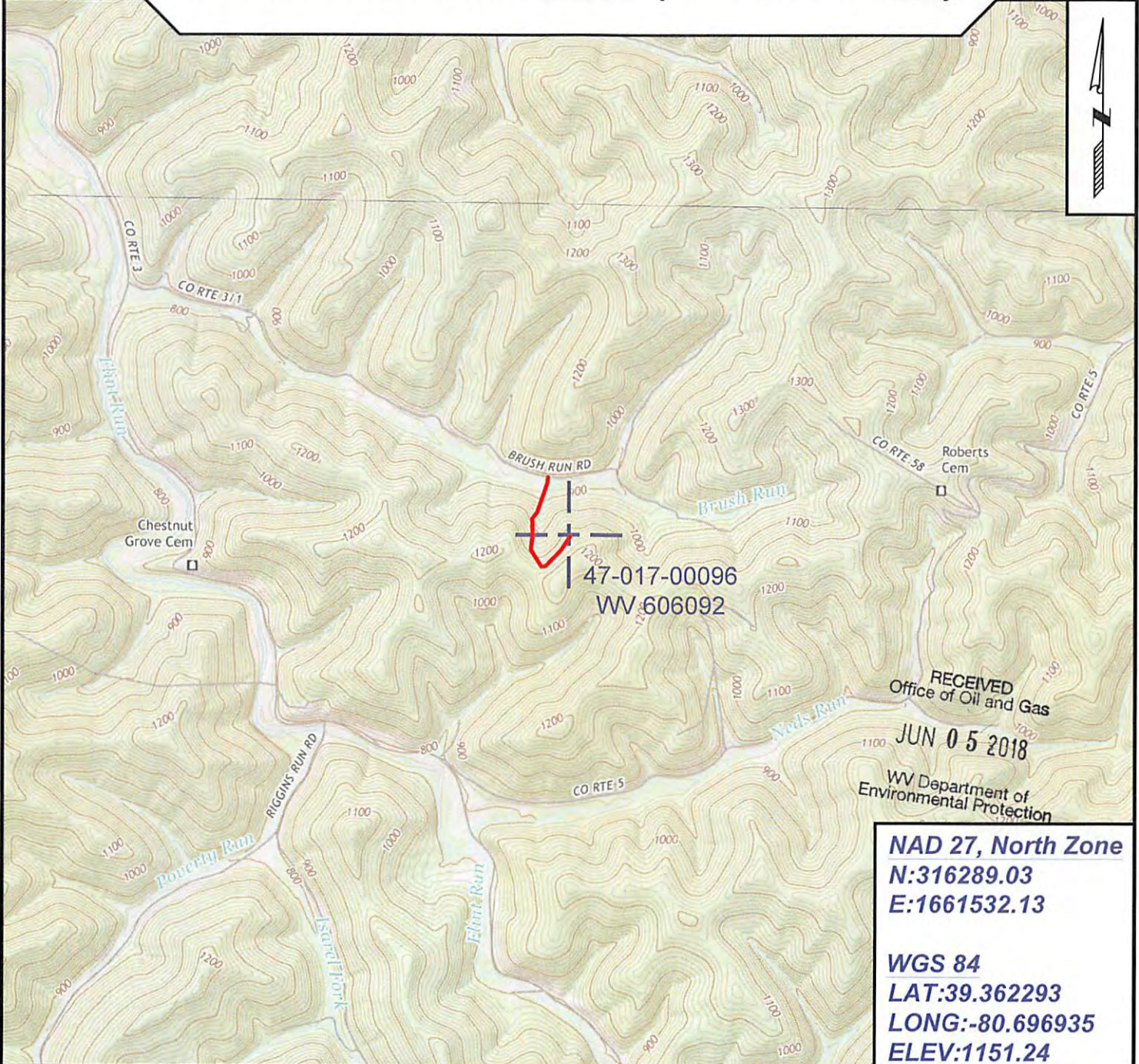


17-00096P

Topo Quad: Smithburg 7.5' Scale: 1" = 2000'
 County: Doddridge Date: April 17, 2018
 District: Grant Project No: 67-30-00-08

47-017-00096 WV 606092 (J. L. Carr #6092)

Topo



RECEIVED
 Office of Oil and Gas
 JUN 05 2018
 WV Department of
 Environmental Protection

NAD 27, North Zone
N:316289.03
E:1661532.13

WGS 84
LAT:39.362293
LONG:-80.696935
ELEV:1151.24



SURVEYING AND MAPPING SERVICES PERFORMED BY:
ALLEGHENY SURVEYS, INC.
 1-800-482-8606
 237 Birch River Road
 Birch River, WV 26610
 PH: (304) 649-8606
 FAX: (304) 649-8608

PREPARED FOR:
EQT Production Company
 2400 Ansys Drive
 Canonsburg, PA 15317

06/15/2018