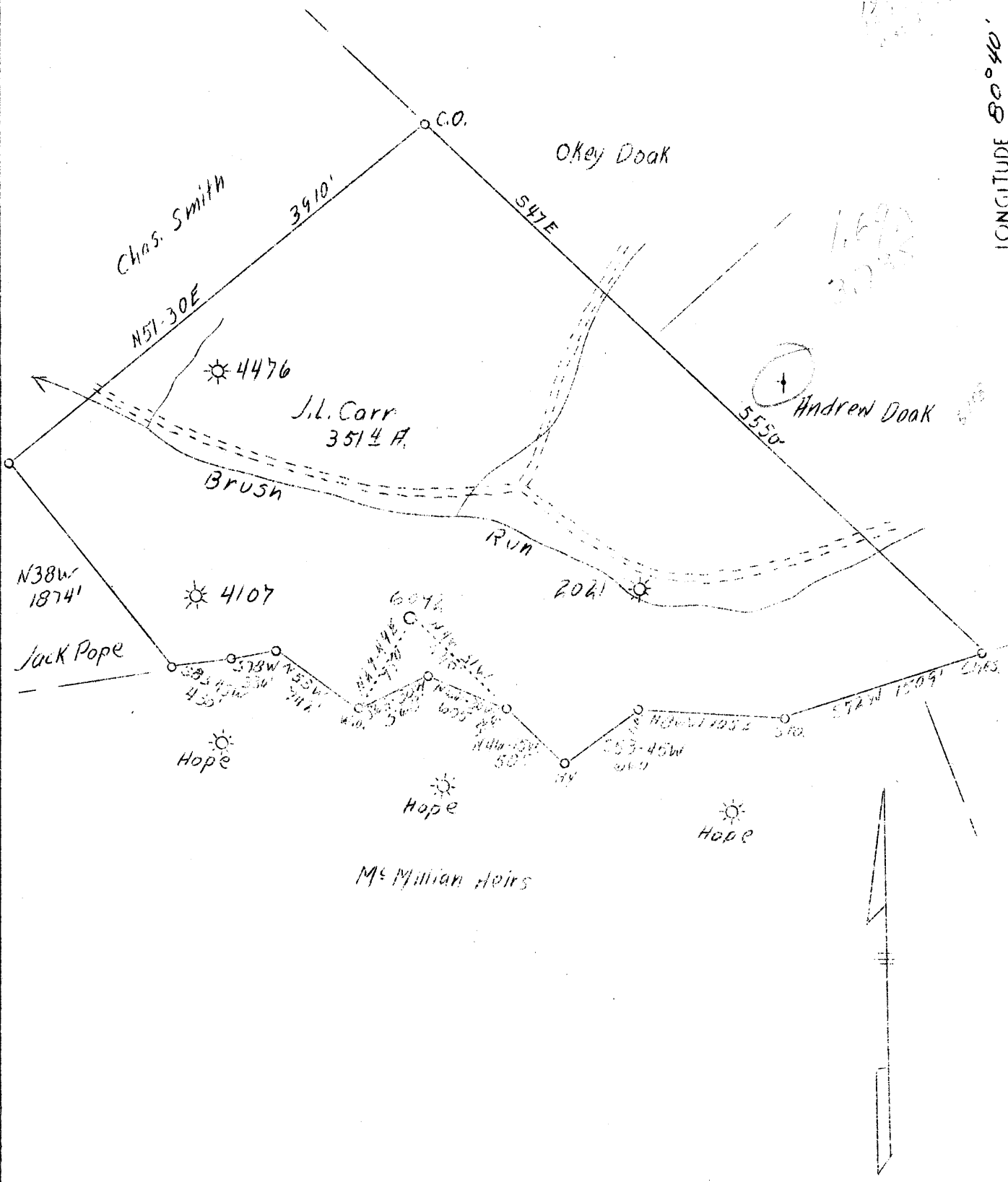


LATITUDE 39° 25'

LONGITUDE 80° 40'



New Location

Company	Pittsburgh & W. Va. Gas Co.
Address	Clarksburg, W. Va.
Farm	J. L. Carr
Acres	351.4
Lease No.	4916
Well (Farm) No.	4
Serial No.	6092
Elevation (SL)	1140 V.A.
Quadrangle	Centerpoint S. 1/2
County	Doddridge
District	Grant
Engineer	James D. Jeffries
Eng. Reg. No.	-
Date	March 23, 1939
Scale	1" = 1000

STATE OF WEST VIRGINIA  
 Department of Mines  
 OIL & GAS DIVISION  
 Charleston

WELL LOCATION MAP

File No. Prod-26

x Denotes location of well on U. S. Topographic Maps, scale 1 to 62,500, latitude and longitude lines being represented by border lines as shown.

- Denotes one inch spaces on border line of original tracing.

WEST VIRGINIA DEPARTMENT OF MINES

OIL & GAS DIVISION

WELL RECORD

Permit No. Dod-96

Gas Well

Centerpoint Quad.

CASING & TUBING

Company	Pittsburgh & W. Va. Gas Co.	13 Wood	15
Address	Clarksburg, W. Va.	10	311 311
Farm	Jos. L. Carr ACRES 351	8-1/4	1131 1131
Location	Centerpoint S/W 1-2	6-5/8	2052 2052
Well No.	6092 ELEV. 1140	3	2857 2857
District	Grant - Doddridge County	Packer - Anchor	
Surface	A. B. Lowther, Spencer, W. Va.	Size - 6-5/8 x 3	
Mineral	R. L. & Kenna McCulty, Spencer, W. Va.	Depth set - 2816	
Commenced	May 20, 1939		
Completed	July 10, 1939	COAL ENCOUNTERED:	
Open Flow	60/10ths Water 1-1/2" opg. on tubing	Feet	Inches
	60/10ths Water 1-1/4 " Csg. head	465	48
Volume	259,000 c.f.	715	24
Rock Pressure	Tubg. 90 lbs. - Casing Head 62 lbs.	1362	12
Fresh Water	615.		
Salt Water	1148		

Formation Color <sup>Hair</sup> TOP Base Result					Formation Color <sup>Hair</sup> TOP Base Result					
Clay	red	s	0	6	Coal	blk	s	1362	1363	elev - 222 53
Lime	drk	h	6	32	Slate	blk	s	1363	1367	
Sand	wh	opn	32	85	Gas Sand	wh	h	1367	1410	
Lime	wh	h	85	105	Slate	s	s	1410	1456	
Red Rock	red	s	105	124	1st Salt S	wh	h	1456	1500	
Sand	yel	s	124	150	Slate	blk	s	1500	1525	
Slate	wh	s	150	169	2nd Salt S	wh	h	1525	1580	
Red Rock	red	s	169	190	Slate	blk	s	1580	1590	
Slate	wh	s	190	275	2nd Salt S	wh	h	1590	1669	
Slate&Shells	wh	h	275	309	Slate	blk	s	1669	1674	
Red Rock	red	s	309	337	Lime	blk	bkn	1674	1725	
Lime	gr	h	337	445	Sand	wh	h	1725	1770	
Slate	wh	s	445	451	Slate	drk	s	1770	1821	
Sand	wh	h	451	460	Lime	drk	bkn	1821	1832	
Slate	drk	s	460	465	Maxon S	wh	h	1832	1872	
Coal	blk	s	465	469	Lime	wh	h	1872	1908	
Lime	wh s	h	469	503	Red Rock-Shells	s	s	1908	1970	
Red Rock	red	s	503	518	Little Lime	wh	h	1970	1993	
Lime	gr	h	518	600	Pencil Cave	drk	s	1993	2003	
Sand	wh	s	600	618	Blue Monday	wh	h	2003	2056	S.L.2052
Slate	wh	s	618	641	Big Lime	wh	h	2056	2094	
Sand	wh	s	641	652	Big Injun	wh	h	2094	2248	
Red Rock	red	s	652	662	Slate&Shells "	s	s	2248	2337	
Slate	wh	s	662	715	Lime	wh	h	2337	2379	
Pgh. Coal	blk	s	715	717	Gantz Sand	gr	h	2379	2500	
Lime	wh	h	717	738	Slate&Shells wh	s	s	2500	2605	
Slate	wh	s	738	770	Lime	gr	h	2305	2685	
Sand	wh	h	770	810	Slate&Shell drk	s	s	2685	2700	
Slate	wh	s	810	819	Lime	drk	h	2700	2735	
Lime	wh	h	819	863	Slate&Shell wh	s	s	2735	2790	
Red Rock	red	s	863	879	Gordon Stray	wh	h	2790	2797	
Slate	wh	s	879	905	Slate	wh	s	2797	2810	S.L.2823
Lime	wh	h	905	937	Gordon Sand	wh	h	2810	2842	
Red Rock	red	s	937	963	Slate&Shells wh	s	s	2842	2857	
Slate	wh	s	963	984	Total Depth				2857	
Slate-Lime	wh	hs	984	1014						
Sand	wh	h	1014	1030	Sh. Gas 2130-32					
Lime	wh	h	1030	1065	" " 2143-45					
Slate	wh	s	1065	1126	Gas 2191-94	15/10 W	2"			
Lime	wh	h	1126	1143	" 2201-05	21/10 W	2"			
Gritty Lime	wh	h	1143	1155	" 2826-36					
Red Rock	red	s	1155	1165						
L. Dunkard	gr	h	1165	1200						
Slate	blk	s	1200	1218						
Lime	blk	h	1218	1240						
Lime	wh	h	1240	1306						
B. Dunkard	wh	h	1306	1362						