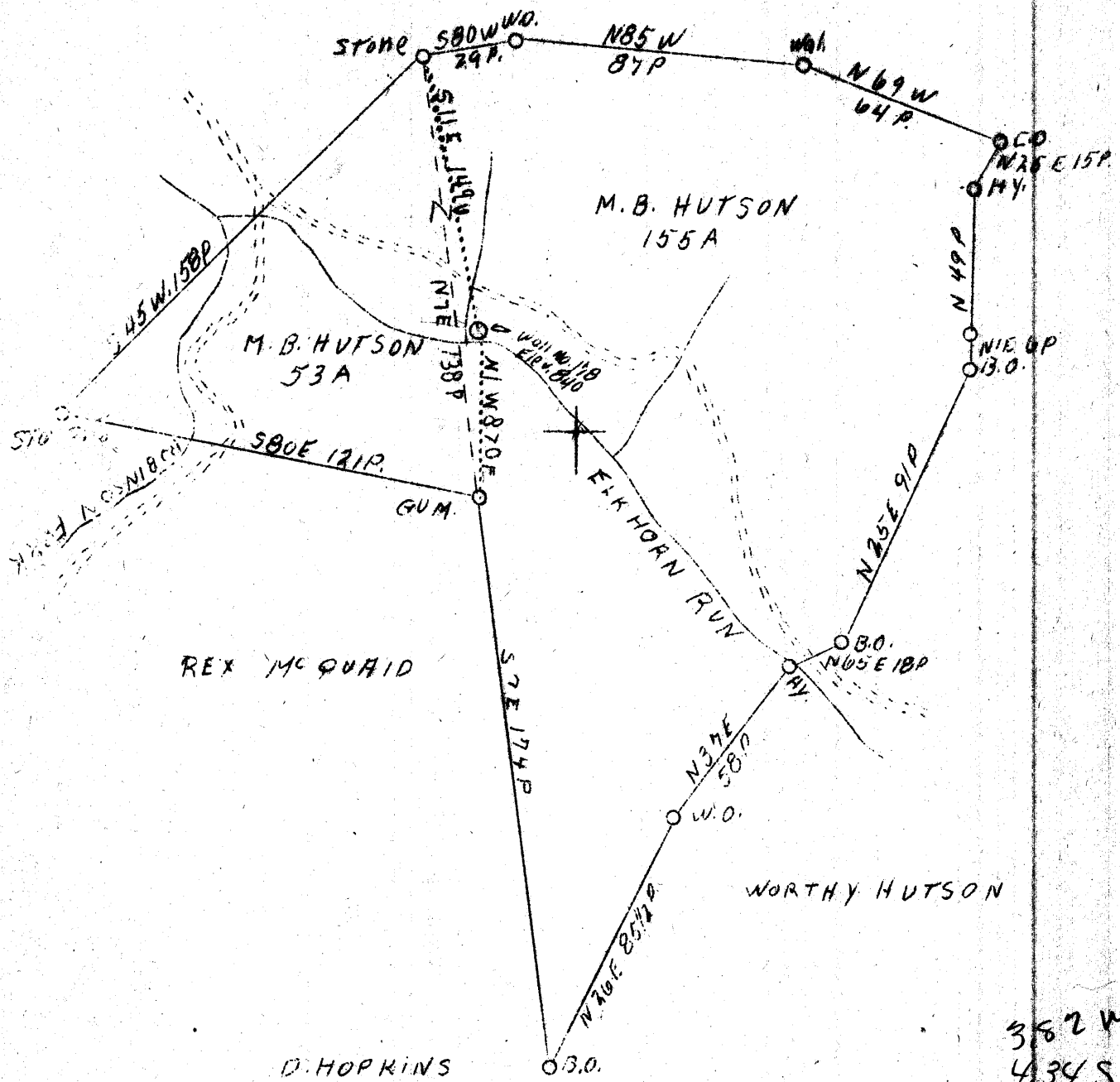


LATITUDE 39° 25'

LONGITUDE 80° 21'

W. HUTSON Hrs.



382 W
434 S

Oil Deeper

Company	Carnegie Natural Gas Co.
Address	Pittsburgh, Pa.
Farm	M. B. Hutson
Tracts	Two
Acres	208
Lease No.	E-3985-15
Well (Farm) No.	One
Serial No.	E-178
Elevation (SP)	840
Quadrangle	Centerpoint S. E. 1/4"
County	Doddridge
District	McClellan
Engineer	Glen H. Huey
Eng. Reg. No.	-
Date	Oct. 25, 1938
Scale	1" = 800'

STATE OF WEST VIRGINIA
 Department of Mines
 OIL & GAS DIVISION
 Charleston

WELL LOCATION MAP

File No. Had-44

x Denotes location of well on U. S. Topographic Maps, scale 1 to 62,500, latitude and longitude lines being represented by border lines as shown.

- Denotes one inch spaces on border line of original tracings.

6-6 199

WEST VIRGINIA DEPARTMENT OF MINES

OIL & GAS DIVISION

WELL RECORD

Permit No. Dod-94 -D

Gas Well

Centerpoint Quad.

CASING & TUBING

Company	Carnegie Natural Gas Co.	3	2784
Address	1014 Frick Bldg., Pittsburgh, Pa.		
Farm	M. B. Hutson ACRES 208		
Location	Elkhorn	Packer - Anchor	
Well No.	178 ELEV. 840	Size - 6/58x3	
District	McClellan - Doddridge County	Depth Set - 2394	
Surface	H. R. Whiteman, R2, Salem, W. Va.	Perf. top - 2397	
Mineral	E. F. Hutson, Atty in Fact for	" bot.- 2408	
	M. B. Hutson Hrs., R2, Salem, W. Va.	" top - 2675	
		" bot.- 2686	
Drilling commenced	Deeper Nov. 1, 1938		
Drilling completed	Deeper Nov. 11, 1938		
Open Flow	40/10ths water in one inch		
Volume	-		
Rock Pressure	-		
Water	-		

Formation Color ^{Har} 5 TOP Base Result Formation Color ^{Har} 5 TOP Base Result

This well was drilled deeper from 2710 feet

Gritty Lime dark h 2710 2784

Total Depth 2784

No additional gas pays encountered.