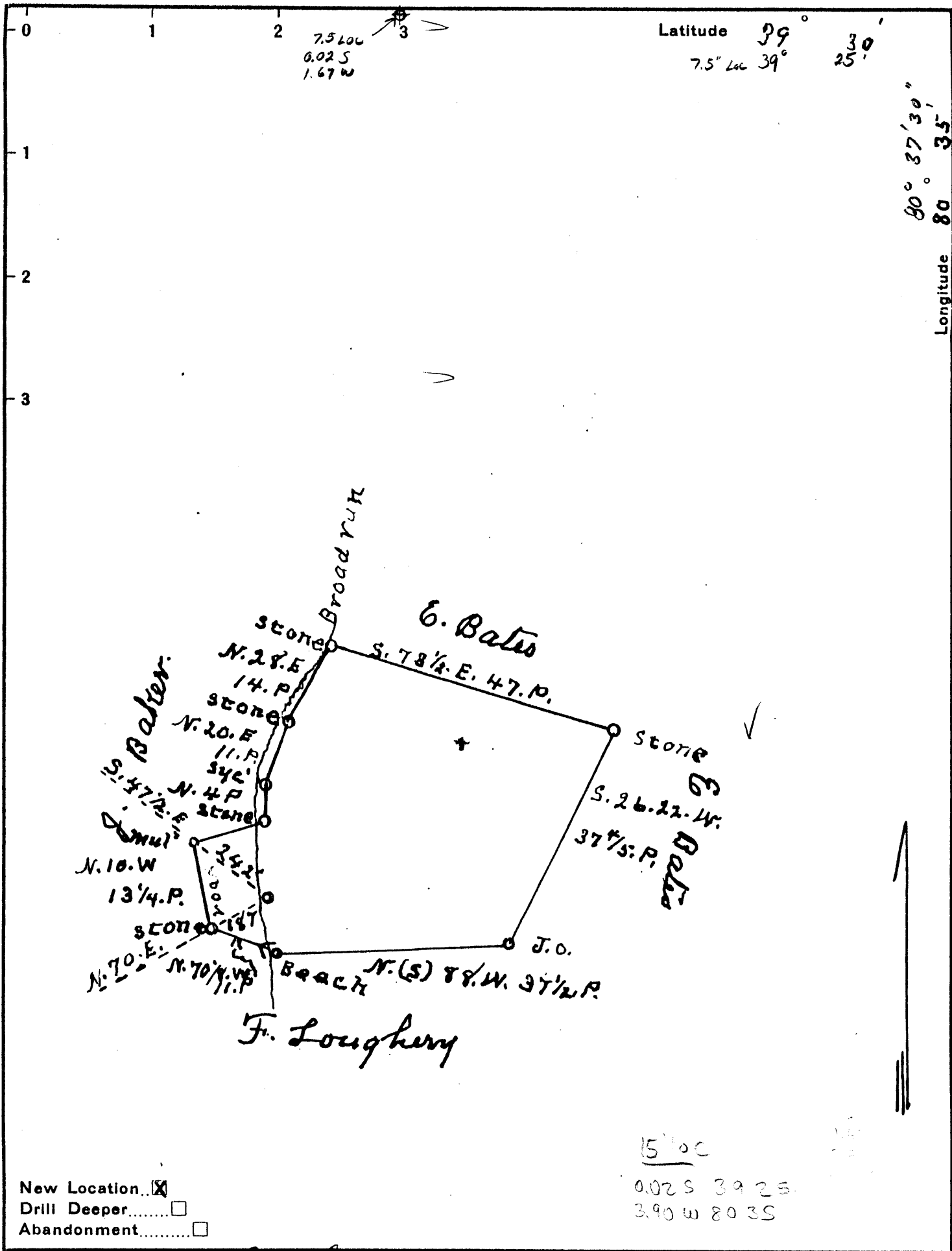


208



New Location...    
 Drill Deeper.....    
 Abandonment.....

Company HP Knight & S.G. McEntyre   
 Address Aloy WVA   
 Farm Arganna Bates   
 Tract 1 Acres 13 7/10 Lease No.   
 Well (Farm) No. 1 Serial No.   
 Elevation (Spirit Level) 815'   
 Quadrangle Centerpoint   
 County Doddridge District McClellan   
 Engineer J.S. Haught   
 Engineer's Registration No. Bureau's Tyler   
 File No. \_\_\_\_\_ Drawing No. \_\_\_\_\_   
 Date 6-18-38 Scale 1" = 20. rds

STATE OF WEST VIRGINIA  
 DEPARTMENT OF MINES  
 OIL AND GAS DIVISION  
 CHARLESTON

WELL LOCATION MAP  
 FILE NO. Dod-89

+ Denotes location of well on United States Topographic Maps, scale 1 to 62,500, latitude and longitude lines being represented by border lines as shown.

- Denotes one inch spaces on border line of original tracing.

WEST VIRGINIA DEPARTMENT OF MINES

OIL & GAS DIVISION

WELL RECORD

Permit No. Dod-89

Oil Well

Centerpoint Quad.

CASING & TUBING

Company	H. R. Wright & S. J. McIntyre	10	400
Address	Alvy, W. Va.	8-1/4	1100
Farm	Arzanna Bates ACRES 13 plus	6-5/8	1856
Location	Broad Run		
District	McClelland - Doddridge County	Coal encountered @ 559	
Surface	Arzanna Bates, Shirley, W. Va.		
Mineral	Same & Mary Lyons Underwood, West Union, W. Va.		
Drilling commenced	July 25, 1938		
Drilling completed	Oct. 15, 1938		
Date shot	10/20/38 - Depth 1910-1920		
Oil	3 bbls to 1-1/2 bbls. 1st 24 hrs.		
Water	-		

Formation Color <sup>Har</sup> 5 TOP Base Result Formation Color <sup>Har</sup> 5 TOP Base Result

Formation	Color	Har	5	TOP	Base	Result	Formation	Color	Har	5	TOP	Base	Result
Little Dunkard				905		925							
Little Lime				1800		1820							
Pencil Cave				1820		1830							
Big Lime				1830		1898							
Big Injun		h		1898		2020							
Total Depth						2030	Depth Found						1915