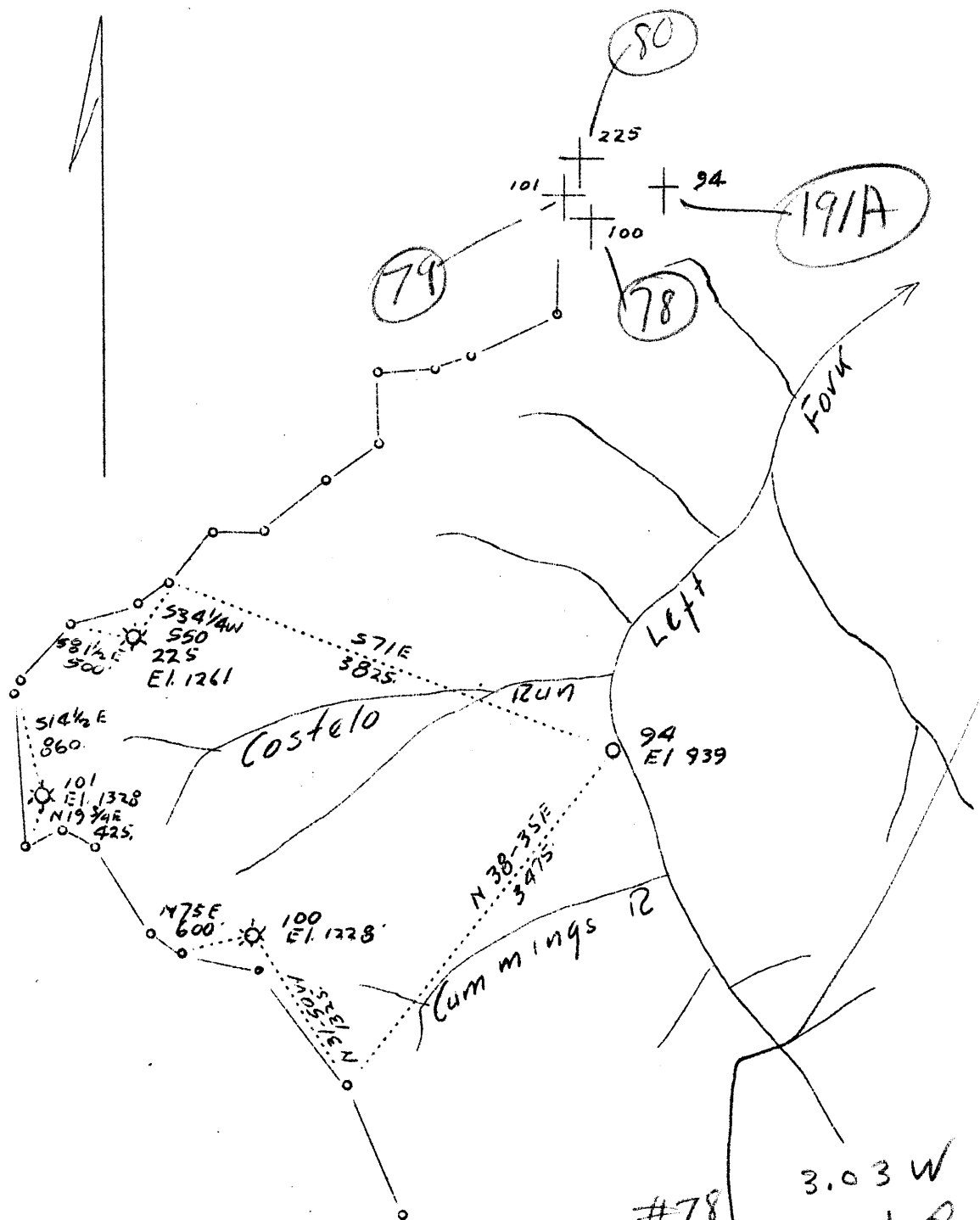


LATITUDE

39° 15'

LONGITUDE 80° 45'



Nos 78 79 80  
 Nos 100, 101 & 225 Drilled Deeper  
 No. 94 Abandonment

#78	3.03 W
(100)	2.01 Q
#79	3.2 W
(101)	1.86 Q
#80	3.1 W
(225)	1.63 Q
#191A	2.59 W
(94)	1.82 Q

SEP 4 1937

Company	Columbian Carbon Co.
Address	P.O. Box 1240, Charleston, W. Va.
Farm	Lewis Maxwell
Tract	Acres 2654.88 Lease No. C-32A
Well (Farm) No.	See Plat Serial No. See Plat
Elevation (Spirit Level)	Noted on Plat
Quadrangle	Holbrook (NE)
County	Doddridge District West Union
Engineer	James N. Sell
Engineer's Registration No.	772
File No.	Drawing No.
Date	Aug. 6, 1937 Scale 1"-1320'

STATE OF WEST VIRGINIA  
 Department of Mines  
 OIL AND GAS DIVISION  
 CHARLESTON

WELL LOCATION MAP

File No. DOD-78-79 & 80

+ Denotes location of well on United States Topographic Maps, scale 1 to 62,500, latitude and longitude lines being represented by border lines as shown.

— Denotes one inch spaces on border line of original tracing.

WEST VIRGINIA DEPARTMENT OF MINES

OIL AND GAS DIVISION

W E L L R E C O R D

Permit No. Dod-80

Gas Well

Holbrook Quad.

CASING & TUBING

Company	Columbian Carbon Co.	Conductor	10	
Address	Box 1240, Charleston, W.Va.		10	335
Farm	Lewis Maxwell		8 1/2	1048
Location	Acres 2654.88		6 5/8	1944
Well No.	Arnolds Creek			
District	42-A (GW-225)	Elev. 1263	2	Pulled
Surface	West Union	County Doddridge		
Mineral	West Union Bank, Spec.Rec. for Lewis			
Drilling (Deeper)	Maxwell, Est., West Union, W.Va.			
Volume	Same			
	12-16-37	Commenced		
	1/2/38	Completed		
	176,160 Cu.Ft.	Rock Press.	13#-5 Min.	

Formation Color <sup>Hor</sup> 5' Top Base Result				Formation Color <sup>Hor</sup> 5' Top Base Result			
Drilling Commenced	Feb. ? , 1922			DRILLED DEEPER:			Gas
Drilling Completed	March 13, 1922						2075
Sand		10	35				2082
Red Rock		35	140	Slate Shells		2100	2130
Sand		140	190	Slate & Lime Shells		2130	2185
Red Rock		190	250	Lime		2185	2243
Lime		250	290	Sand	H	2243	2255
Red Rock		290	320	Lime		2255	2258
Lime		320	345	Sand		2258	2350
Red Rock		345	425	Slate & Shells		2350	2415
Sand		425	500	Slate & Lime Shells		2415	2472
Slate		500	520	Sand	H	2472	2486
Red Rock		520	545	Slate & Lime Shells		2486	2535
Lime		545	560	Lime Shells		2535	2600
Slate		560	575	Slate & Lime Shells		2600	2640
Lime		575	605	Gantz Sand		2640	2648
Slate		605	650	Slate	White	2648	2677
Lime		650	680	Gordon Sand		2677	2685
Slate		680	775	Slate		2685	2708
Red Rock		775	865	NEW TOTAL DEPTH			2708
Little Dunk. Sand		865	900				2642
Slate		900	935				2100
Red Rock		935	945				608
Lime		945	970				Gas
Red Rock		970	990				Pay
Slate		990	1025				2380
Big Dunk. Sand		1025	1065				2685
Slate		1065	1075				
1st Salt Sand		1075	1105				
Slate & Lime Shells		1105	1225				
2nd Salt Sand		1225	1300				
Slate		1300	1325				
3rd Salt Sand		1325	1340				
Slate		1340	1375				
4th Salt Sand		1375	1480				
Slate	Black	1480	1520				
Sand		1520	1535				
Slate	Black	1535	1580				
Sand		1580	1625				
Lime Shells		1625	1660				
Slate	Black	1660	1700				
Sand		1700	1750	Oil &			
Slate		1750	1820	Gas			
Maxon Sand		1820	1855	Show			
Slate		1855	1880	1720-35			
Red Rock		1880	1885				
Slate		1885	1895	Gas			
Lime		1895	1908	1840-45			
Slate		1908	1912				
Blue Monday Sand		1912	1920				
Pencil Cave		1920	1934				
Big Lime		1934	1991				
Big Injun		1991	2082	Gas			
Slate		2082	2100	2031			
OLD TOTAL DEPTH			2100	Gas			
				2072-73			