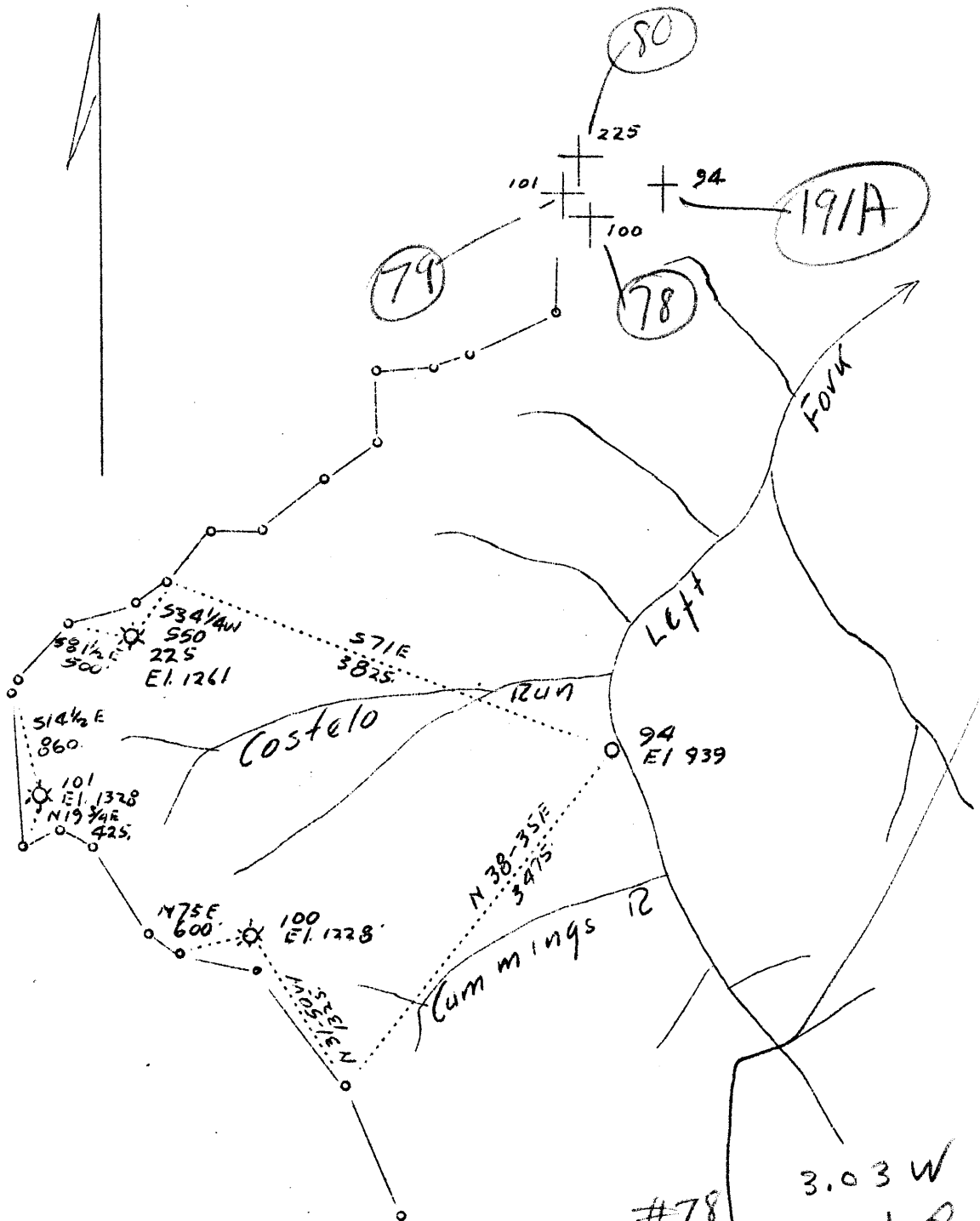


LATITUDE

39° 15'

LONGITUDE 80° 45'



Nos 78 79 80
 Nos 100, 101 & 225 Drilled Deeper
 No. 94 Abandonment

#78	3.03 W
(100)	2.01 Q
#79	3.2 W
(101)	1.86 Q
#80	3.1 W
(225)	1.63 Q
#191A	2.59 W
(94)	1.82 Q

SEP 4 1937

Company	Columbian Carbon Co.
Address	P.O. Box 1240, Charleston, W. Va.
Farm	Lewis Maxwell
Tract	Acres 2654.88 Lease No. C-32A
Well (Farm) No.	See Plat Serial No. See Plat
Elevation (Spirit Level)	Noted on Plat
Quadrangle	Holbrook (NE)
County	Doddridge District West Union
Engineer	James N. Sell
Engineer's Registration No.	772
File No.	Drawing No.
Date	Aug. 6, 1937 Scale 1"-1320'

STATE OF WEST VIRGINIA
 Department of Mines
 OIL AND GAS DIVISION
 CHARLESTON

WELL LOCATION MAP

File No. DOD-78-79 & 80

+ Denotes location of well on United States Topographic Maps, scale 1 to 62,500, latitude and longitude lines being represented by border lines as shown.

— Denotes one inch spaces on border line of original tracing.

WEST VIRGINIA DEPARTMENT OF MINES

OIL AND GAS DIVISION

W E L L R E C O R D

DEEPENING RECORD

Gas Well

CASING & TUBING

Permit No. Dod-79

Holbrook Quad.

Company	Columbian Carbon	10- ³ / ₄	485'6"	485'6"
Address	Box 1240, Charleston, W.Va.	8 ¹ / ₄	1130'7"	1130'7"
Farm	Lewis Maxwell (C-32-A) Acres 2654.88.6 ⁵ / ₈		1540'	1540'
Location	Arnolds Creek	5 3/16	2025'	2025'
Well No.	41-A (GW-101)	Elev. 1328		
District	West Union	County Doddridge		
Surface Address	West Union Bank, Spec. Rec. for Estate of Lewis Maxwell, West Union, W.Va.			
Mineral	Same			
Drilling (Deeper)	10-15-37	Commenced		
	11-6-37	Completed		
Date Shot	11-16-37	Depth 2710-2719		
Volume	67,392 Cu.Ft.			
Rock Press.	Not given			
Oil	2717-18-100' in 7" O.D. Hole in 30 hrs.			

Formation	Color	Hor	Top	Base	Result	Formation	Color	Hor	Top	Base	Result
Started drilling Nov. 3, 1921						Stated drilling deeper Oct. 15, 1937					
Completed Drilling Dec. 6, 1921						Completed drilling deeper, Nov. 6, 1937					
Red Rock			10	110		Lime			2143	2200	
Slate			110	210		Gantz Sand	H		2200	2420	Very
Red Rock			210	280		Slate & Shells			2420	2500	hard-
Sand			280	350		Lime			2500	2566	2306-
Red Rock			350	400		Slate			2566	2593	2315.
Lime			400	450		Lime	H		2593	2659	
Red Rock			450	480		Slate			2659	2694	Very
Sand			480	560		Gordon Stray			2694	2702	hard
Red Rock			560	600		Slate			2702	2710	2385-
Slate			600	660		Gordan Sand			2710	2718	2410
Lime			660	700		Slate			2718	2746	SLM
Red Rock			700	850							
Slate			850	925							
Sand-Little Dunkard			925	955		NEW TOTAL DEPTH				2746	
Slate			955	975						2145	
Red Rock			975	990						601	
Slate	Dark		990	1045							
Lime			1045	1060							
Slate			1060	1090							
Big Dunkard Sand			1090	1130							
Slate			1130	1145							
Gas Sand			1145	1170							
Slate	Black		1170	1210							
Lime			1210	1280							
1st Salt Sand			1280	1410							
Slate			1410	1425							
2nd Salt Sand			1425	1555	Water						
Slate			1555	1680	1495'						
3rd Salt Sand			1680	1705	2 bailers						
Slate & Shells			1705	1765	Water						
Stray Salt Sand			1765	1815	H.F.W.						
Lime			1815	1908	1518						
Sand			1908	1937							
Lime			1937	1953							
Slate			1953	1961							
Little Lime			1961	1975							
Slate			1975	1980							
Blue Monday Sand			1980	1990							
Pencil Cave			1990	1998	Gas-Little Show						
Big Lime			1998	2053	2097'						
Big Injun Sand			2053	2145	Gas -4th pay						
OLD TOTAL DEPTH				2145	2132-36						
					Gas-1st Pay						
					2142-43						