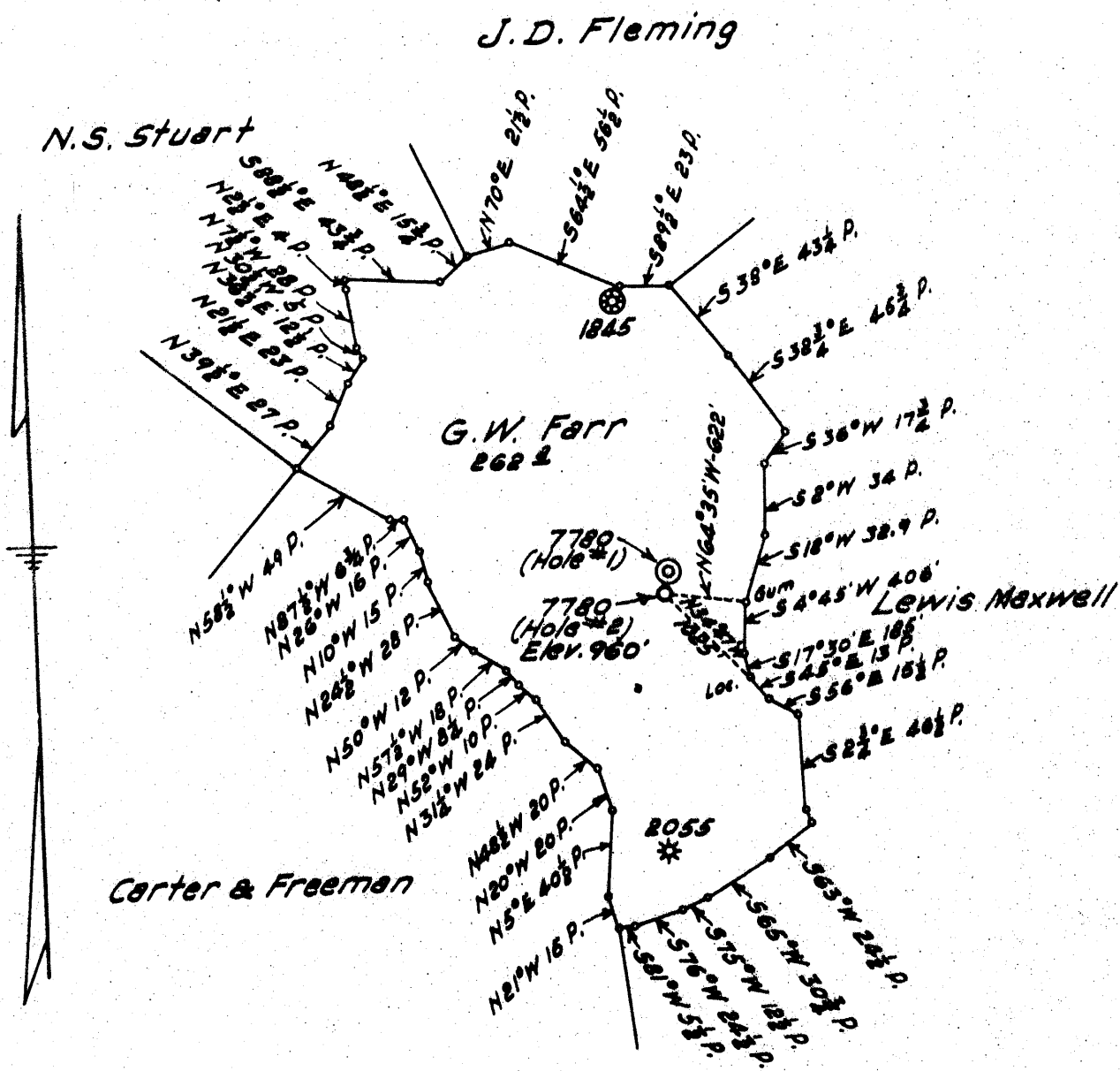


Latitude 39° 15'

0.75
2.7450
60°

Longitude



Note: Hole #1 abandoned on account of Loosing Tools.

New Location
 Drill Deeper
 Abandonment Issued July 19, 1967

F.B. 661 - P.35

Company Hope Natural Gas Co.
 Address Clarksburg, W.Va.
 Farm G.W. Farr
 Tract _____ Acres 262 Lease No. _____
 Well (Farm) No. 4 Serial No. 7780
 Elevation (Spirit Level) 960
 Quadrangle Holbrook Nc
 County Doddridge District West Union
 Engineer Wm Bowers
 Engineer's Registration No. 900
 File No. _____ Drawing No. _____
 Date June, 29, 1938 Scale 1" = 80 Poles

STATE OF WEST VIRGINIA
 DEPARTMENT OF MINES
 OIL AND GAS DIVISION
 CHARLESTON

WELL LOCATION MAP
 FILE NO. Dod. 72-P
 WAS: 017 - 70074
 + Denotes location of well on United States Topographic Maps, scale 1 to 62,500, latitude and longitude lines being represented by border lines as shown.
 - Denotes one inch spaces on border line of original tracing.
 73078 on CNG map.

1262

dup. can discard ok



McCullough

SCINTILLOMETER
NUCLEAR
GAMMA RAY LOG

FILING NO. H-45927	COMPANY	CONSOLIDATED GAS SUPPLY CORPORATION	
	WELL	G. W. ^{FARR} FORD #7780	
	FIELD	WEST UNION DISTRICT	
	COUNTY	DODDRIDGE ⁷²	STATE
LOCATION:			OTHER SERVICES
SEC. TWP. RGE.			EATKA

PERMANENT DATUM	ELEV.	KB.
LOG MEASURED FROM	TOP OF 7" CASING	DF.
DRILLING MEASURED FROM	TOP OF 7" CASING	GL.
DATE	6-22-67	
RUN NO.	ONE	
TYPE LOG	GAMMA RAY	
DEPTH—DRILLER	1827'	
DEPTH—LOGGER	1827'	
BOTTOM LOGGED INTERVAL	1825'	
TOP LOGGED INTERVAL	1550'	
TYPE FLUID IN HOLE		
SALINITY PPM CL		
DENSITY LB/GAL		
LEVEL		
MAX. REC. TEMP. DEG. F		
OPR. RIG TIME	1 HOUR	
RECORDED BY	KEENER	
WITNESSED BY	MR. MCCLELLAN	

RUN NO.	BORE HOLE RECORD			CASING RECORD			
	BIT	FROM	TO	SIZE	WGT.	FROM	TO
1	6 1/4"	1689	T.D.	6 5/8"		0	1689
				4 1/2"		0	T.D.

THIS HEARING AND LOG CONFORMS TO A RECOMMENDED STANDARD PRACTICE PART 0

WEST VIRGINIA DEPARTMENT OF MINES

OIL & GAS DIVISION

WELL RECORD

Permit No. **Dod-72**

Holbrock Quad.

Gas Well

CASING & TUBING

Company	Hope Natural Gas Co.	13	211	211
Address	Clarksburg, W. Va.	10	768	768
Farm	G. W. Farr ACRES 262	8-1/4	1201	1201
Location	Right Fork of Middle Creek	6-5/8	1689	1689
Well No.	7780 Hole #2 ELEV. 960			
District	West Union County Doddridge	Not cemented.		
Surface	Agnes V. Farr, West Union, W. Va.			
Mineral	-	Coal Encountered:		
Drilling commenced	6-27-38	307' - 12 inches		
Drilling completed	10-12-38			
Date shot	Not shot			
Open Flow	10/10ths Merc. in 2"			
Volume	556-M			
Rock Pressure	180 lbs. 24 hrs.			
Fresh Water	50 & 220			
Salt Water	1173			

Formation	Color	Top	Base	Result	Formation	Color	Top	Base	Result
Conductor			15						
Red Rock		15	40						
Sand		40	70	W-50					
Lime		70	115	Fresh					
Slate		115	142						
Red Rock		142	164						
Honey Up Sand		164	224	W-220					
Slate		224	307	Fresh					
Pittsburgh Coal		307	308						
Lime		308	332						
Slate		332	350						
Lime		350	385						
Slate		385	435						
Red Rock		435	468						
Slate		468	483						
Lime		483	522						
Slate		522	597						
Sandy Lime		597	622						
Slate		622	657						
Red Rock		657	703						
Slate		703	720						
Little Dunkard Sand		720	733						
Big Dunkard Sand		733	758						
Gas Sand		758	797						
Lime Shells		797	832						
First Salt Sand		832	1009						
Slate		1009	1037						
Second Salt Sand		1037	1073						
Slate		1073	1190	W-1173					
Lime		1190	1250						
Slate		1250	1365						
Lime		1365	1395						
Slate		1395	1425						
3rd Salt Sand		1425	1452	Gas 1454-1459					
Slate		1452	1459						
Sand		1459	1492						
Maxon Sand		1492	1530						
Little Lime		1530	1561						
Pencil Cove		1561	1585						
Big Lime		1585	1620						
Big Injun Sand		1620	1630						
Slate		1630	1634						
		1634	1724						
		1724	1805	Gas 1750-1770					
		1805	1857	1799-1804					
Total Depth			1857						