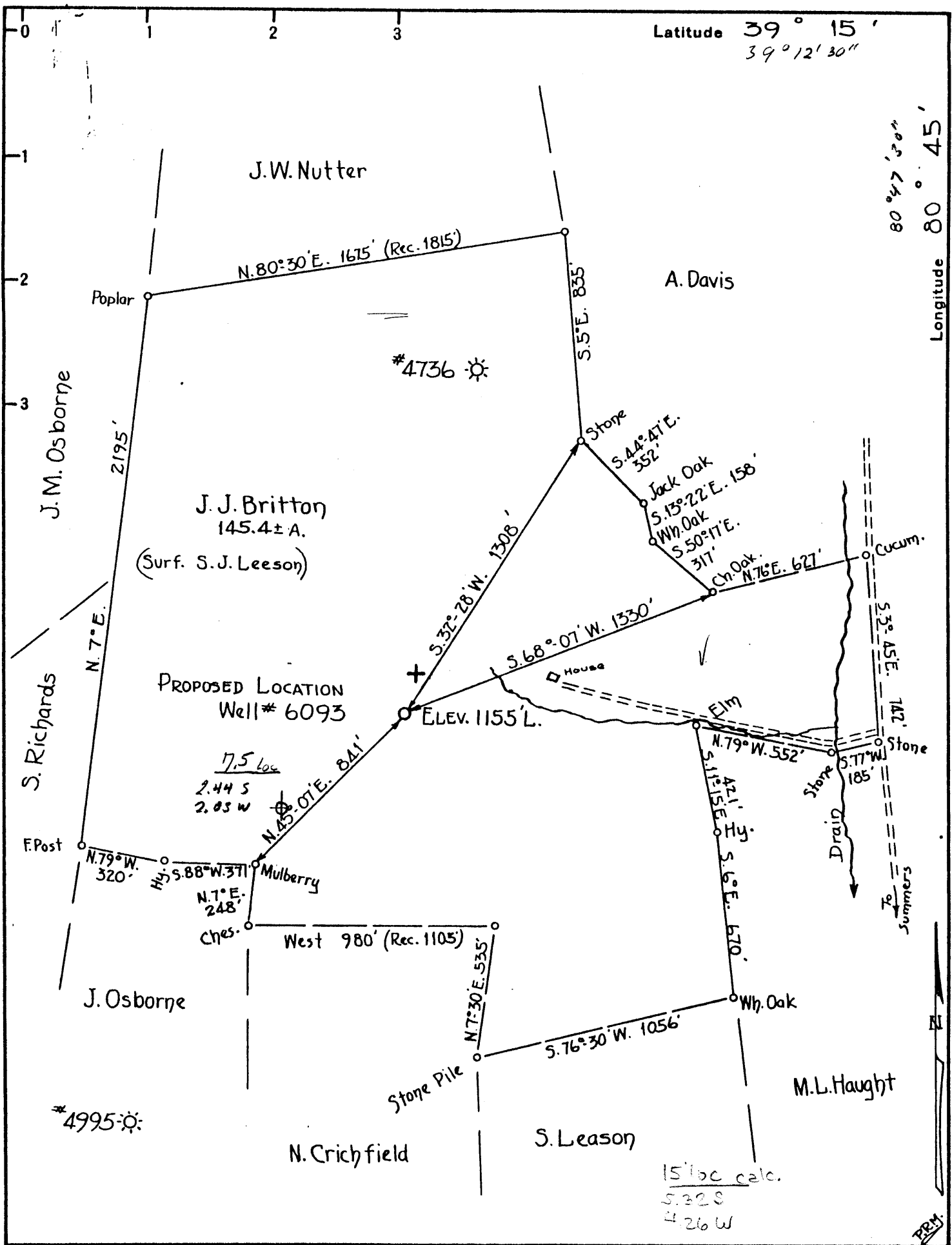


Latitude 39° 15' 39° 12' 30"

Longitude 80° 45' 80° 47' 30"



Company PITTSBURGH & W.VA. GAS CO.  
 Address UNION BANK B'LD'G., CLARKSBURG, W.VA.  
 Farm J.J. BRITTON  
 Tract Acres 145.4± Lease No. 7441  
 Well (Farm) No. 2 Serial No. 6093  
 Quadrangle HOLBROOK N.E. 32 ± 15' NE  
 County DODDRIDGE  
 District SOUTHWEST  
 Engineer H. C. Benjamin  
 Engineer's Registration No. 764  
 File No. \_\_\_\_\_ Drawing No. \_\_\_\_\_  
 Date MAY 21, 1936 Scale 1" = 500'

STATE OF WEST VIRGINIA  
 DEPARTMENT OF MINES  
 OIL AND GAS DIVISION  
 CHARLESTON

**WELL LOCATION MAP**  
 FILE NO. Dod-64

+ Denotes location of well on United States Topographic Maps, scale 1 to 62,500, latitude and longitude lines being represented by border lines as shown.

- Denotes one inch spaces on border line of original tracing.

WEST VIRGINIA DEPARTMENT OF MINES  
OIL AND GAS DIVISION

125

WELL RECORD

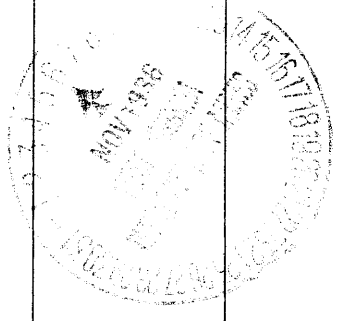
Permit No. **Dodd-64**

Oil or Gas Well **Gas**  
(Kind)

Company **Pittsburgh & West Va. Gas Co.**  
Address **Clarksburg, West Va.**  
Farm **J. S. Britton** Acres **145.4**  
Location (waters) **Holbrook N.E. 3-2**  
Well No. **6093** Elev. **1155'**  
District **Southwest** County **Doddridge**  
The surface of tract is owned in fee by **S.J. Leeson**  
Address **Oxford, West Va.**  
Mineral rights are owned by **Mamie Britton**  
Address **Oxford, W.Va.**  
Drilling commenced **September 17th, 1936.**  
Drilling completed **October 22nd, 1936.**  
Date shot..... Depth of shot.....  
Open Flow **4** /10ths Water in..... Inch  
**1** /10ths Merc. in..... **1" Opng.** Inch  
Volume..... **87,000** Cu. Ft.  
Rock Pressure **675** lbs. **6** hrs.  
Oil..... **135** bbls., 1st 24 hrs.  
Fresh water..... feet..... feet  
Salt water..... feet..... feet

Casing and Tubing	Used in Drilling	Left in Well	Packers
Size			
16			Kind of Packer
13 <b>Wood</b>	<b>16'</b>	<b>16'</b>	<b>B.H. Packer</b>
10	<b>405'</b>	<b>405'</b>	Size of <b>8-1/4 X</b>
8 1/4	<b>1100'</b>	<b>1100'</b>	<b>6-5/8"</b>
6 5/8	<b>1908'</b>	<b>1908'</b>	Depth set <b>1908'</b>
5 3/16			
3			Perf. top.....
2			Perf. bottom.....
Liners Used.....			Perf. top.....
			Perf. bottom.....
CASING CEMENTED..... SIZE..... No. FT..... Date.....			
COAL WAS ENCOUNTERED AT..... FEET..... INCHES			
..... FEET..... INCHES..... FEET..... INCHES			
..... FEET..... INCHES..... FEET..... INCHES			

Formation	Color	Hard or Soft	Top	Bottom	Oil Gas or Water	Depth Found	Remarks
Red Rock	Red	Soft	0	30			
Lime	White	Hard	30	78			
Sand	"	"	78	97			
Red Rock	Red	Soft	97	110			
Lime	White	Hard	110	120			
Red Rock	Red	Soft	120	165			
Sand	White	Hard	165	195			
Red Rock	Red	Soft	195	220			
Lime	White	Broken	220	250			
Slate	"	Soft	250	330			
Red Rock	Red	"	330	403			
Lime	White	Hard	403	450			
Red Rock	Red	Soft	450	490			
Lime	White	Hard	490	565			
Red Rock	Red	Soft	565	584			
Lime	White	Hard	584	620			
Slate	"	Soft	620	658			
Lime	Dark	Hard	658	678			
Red Rock	Red	Soft	678	763			
Lime (Gritty)	White	Hard	763	775			
Sand	"	"	775	792			
Lime	"	"	792	815			
Slate	"	Soft	815	830			
Lime	"	Hard	830	862			
Slate&Shell	"	H.&.Soft	862	875			
Lime	Light	Hard	875	895			
Slate	"	Soft	895	1012			
Big Dunkard	White	Hard	1012	1044			
Slate	Black	Soft	1044	1050			
Lime	Dark	Hard	1050	1060			
Sand	Light	"	1060	1079			
Slate	White	Soft	1079	1100			
Sandy Lime	"	Hard	1100	1128			
Slate	"	Soft	1128	1135			
Lime	"	Hard	1135	1155			
Slate	"	Soft	1155	1165			
Lime	Dark	Hard	1165	1195			
Slate	"	Soft	1195	1205			
Gas Sand	White	"	1205	1253			
Slate	Dark	"	1253	1265			
Sandy Lime	"	Hard	1265	1285			
Slate	Light	Soft	1285	1290			



011 1070' Show 011  
Steel Line 1110'

OVER

Formation	Color	Hard or Soft	Top	Bottom	Oil, Gas or Water	Depth Found	Remarks
Sandy Lime	Light	Hard	1290	1410			
Slate	Dark	Soft	1410	1465			
Sandy Lime	Hard	Hard	1465	1483			
Slate	Dark	Soft	1483	1530			
1st. Salt Sand	White	Solid	1530	1659			
Slate	Dark	Soft	1659	1699			
Lime	"	Hard	1699	1734			
Maxon Sand	White	"	1734	1768			
Slate	Black	Soft	1768	1822			
Lime	Dark	Hard	1822	1831			
Slate	White	Soft	1831	1833			
Blue Monday	Blue	Hard	1833	1845			
Slate	Light	Soft	1845	1848			
Lime	"	Hard	1848	1861			
Slate	"	Soft	1861	1865			S.L.1865'
Lime	Dark	Hard	1865	1873			
Slate	White	Soft	1873	1876			
Sand	Light	Hard	1876	1884			
Slate	"	Soft	1884	1895			
Big Lime	"	Hard	1895	1962			S.L.1908'
Big Injun	Dark	"	1962	2032	Gas	2002-2022'	6/10 H. 1"
Slate	Light	Soft	2032	2062			S.L.2003'
Total Depth				2062			

Date **November 5th,** 19**36**

APPROVED **PITTSBURGH & WEST VA GAS CO.**, Owner

By *F. B. Bridger*  
 (Title)