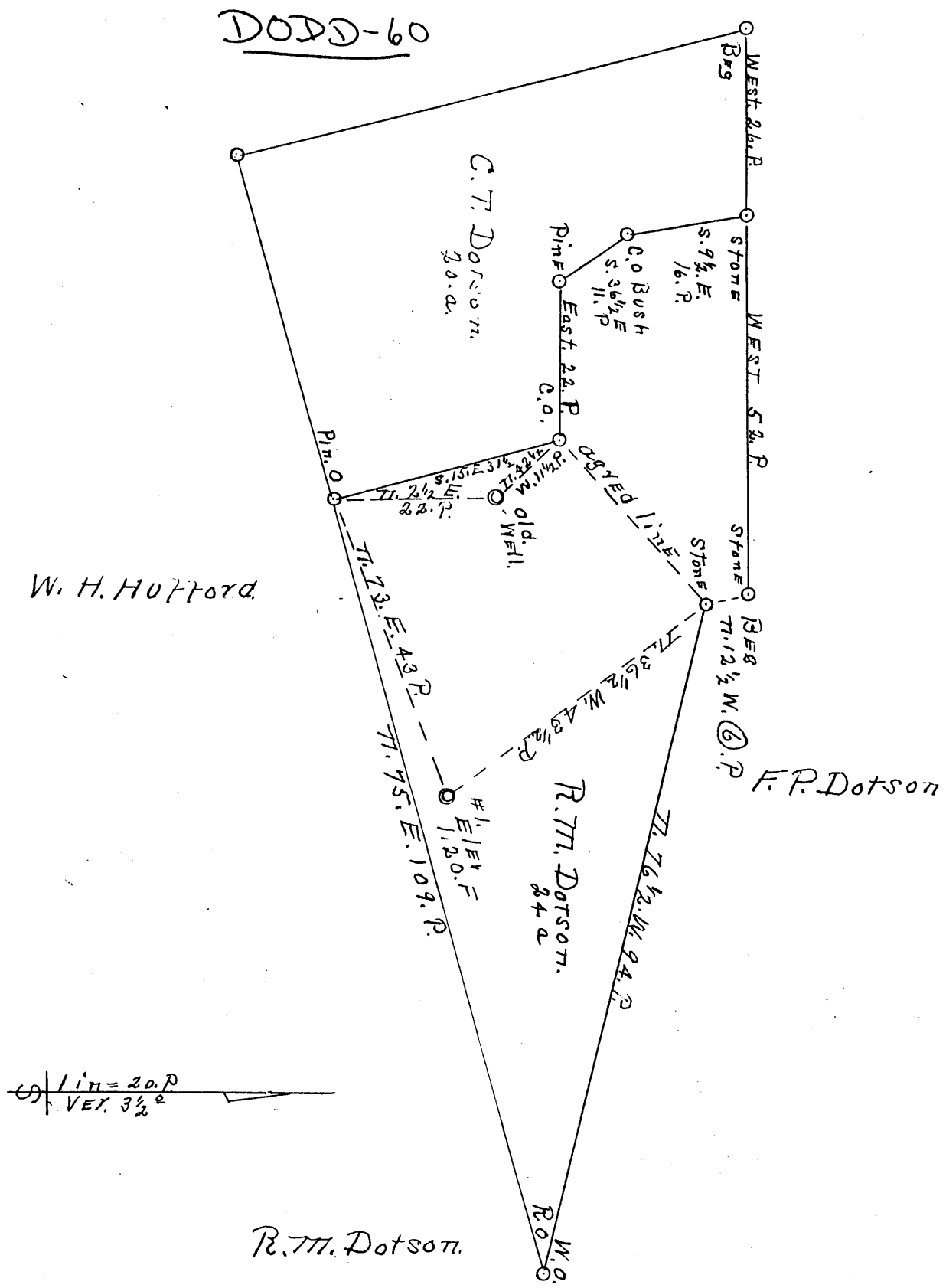


PLAT, of the proposed location of Well No. I, of the King Knob Gas Co, of Weston, W. Va, on the R.M. Dotson, Et Al Farm, consisting of 24 Acres Located in Central District, Dodridge Co. W. Va.



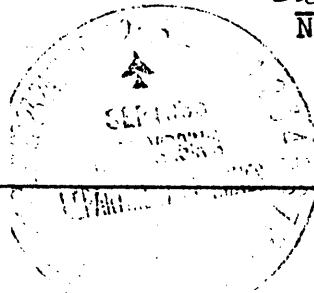
I, the undersigned hereby certify that this Map is correct, and shows all the information to the best of my knowledge and belief, required by the oil and gas section of the Mining Laws of West, Va.

*D. G. McLaughlin*  
 Engineer.

Acknowledged before me a Notary Public for Ritchie County, this 20th day of Sept, 1935.

*Beatrice M. Miller*  
 Notary Public.

My commission expires on the 9th day of March, 1937.



LATITUDE 39° 17' 30"



LONGITUDE 80° 52' 30"

7'5 OGIS topo location

7.5' loc	<u>0.73 S</u>	15' loc	<u>3.61 S</u>
	<u>1.51 W</u>	(calc.)	<u>3.74 W</u>

Company KING KNOB GAS CO

Farm R. M. DOTSON

Quad PENNSBORO Westunion SC

County DOOD

District CENTRAL

WELL LOCATION MAP

File No. 017 - 60

Central District, Doddridge County, W. Va.  
 By The King Knob Gas Co., Weston, W. Va. (B.F. Cayton, President).  
 On 16 acres, surface and mineral rights owned by R. M. Dotson,  
 Greenwood, W. Va.  
 Drilled under permit Dodd-60, issued October 8, 1935.  
 No elevation given.  
 10" casing, 340'; 8 $\frac{1}{4}$ " 1340'; 5-3/16" 2122'.  
 No coal was encountered.  
 Completion reported to Dept. of Mines July 3, 1936.  
 Dry hole.

	Top.	Bottom.	Thickness.
Red clay	0	- 70	70
Clay, yellow	70	- 85	15
Clay, red	85	- 150	65
Shale, gray	150	- 170	20
Lime	170	- 220	50
Sand	220	- 235	15
Red rock	235	- 275	40
Lime	275	- 300	25
Red rock	300	- 360	60
Lime	360	- 400	40
Sand	400	- 420	20
Lime, red	420	- 500	80
Lime, white	500	- 560	60
Red rock	560	- 600	40
Lime, white	600	- 665	65
Lime, white	665	- 675	110
Sand, white	775	- 795	20
Lime and shells	795	- 880	85
Lime, very hard	880	- 900	20
Shale, blue	900	- 945	45
Lime	945	- 1020	75
Big red	1020	- 1105	85
Lime	1105	- 1180	75
Shale, black	1180	- 1200	20
Little Dunkard Sand	1200	- 1230	30
Slate	1230	- 1240	10
Red rock	1240	- 1255	15
Shale, blue	1255	- 1270	15
Lime	1270	- 1285	15
Shale, black	1285	- 1295	10
Shale, white	1295	- 1304	9
Lime, white	1304	- 1335	31
Slate and shells	1335	- 1363	28
Gas Sand	1363	- 1421	58
Slate and shells	1421	- 1500	79
Shale, black	1500	- 1550	50
Lime	1550	- 1585	35
1st Salt Sand	1585	- 1605	20
Lime and shells	1605	- 1690	85
2nd Salt Sand (2 bailers of water per hour)	1690	- 1718	28
Slate, black	1718	- 1785	67
Lime	1785	- 1810	25
3rd Salt Sand	1810	- 1869	59

(OVER)

R. M. DOTSON NO. 1 WELL (Continued).

	Top.	Bottom.	Thickness.
Slate, black	1869	- 1990	121
Maxton Sand (hole full water, 2025')	1990	- 2083	93
Slate	2083	- 2100	17
Little Lime	2100	- 2112	12
Slate	2112	- 2118	6
Pencil Cave	2118	- 2121	3
Big Lime	2121	- 2209	88
Big Injun Sand (show of oil, 2218-68')	2209	- 2268	59
Total depth		2301	