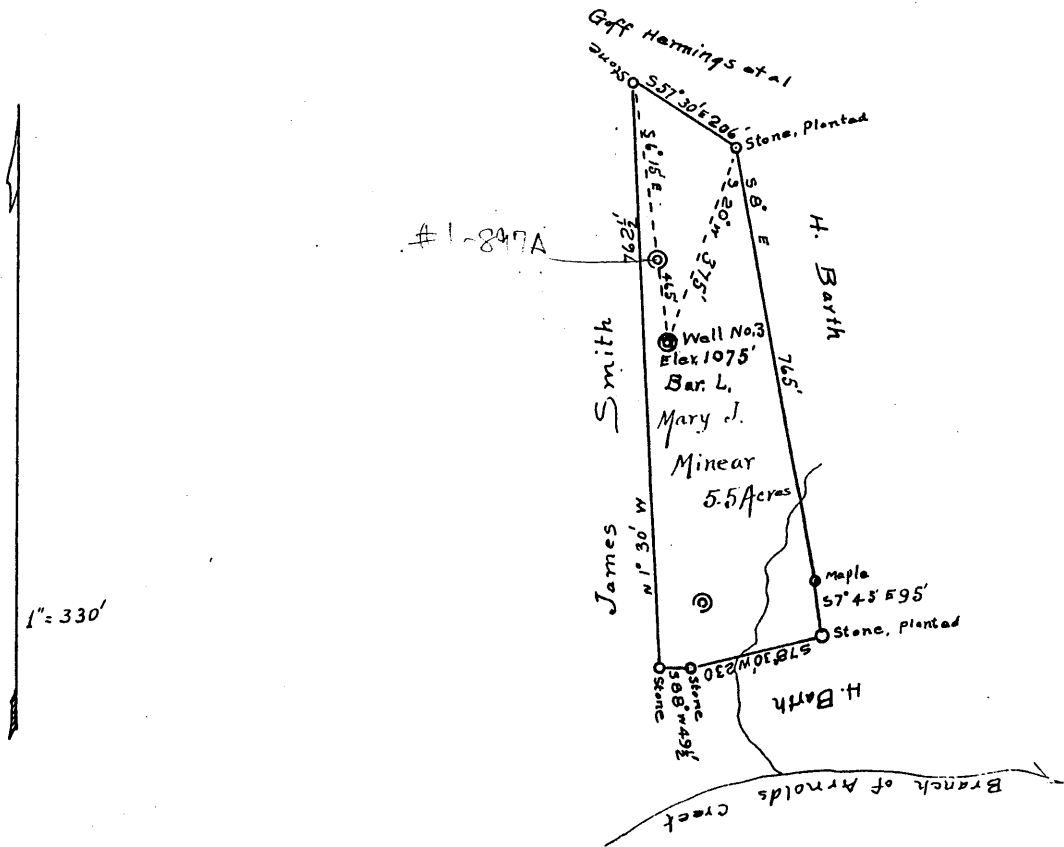


Plat of the proposed location of Well No. 3 of James D. Foley, and others, of West Union, West Virginia, on the Mary J. Minear Farm, consisting of 5.5 acres, located in West Union District, Doddridge County.



DOD-57

I, the undersigned, hereby certify that this Map is correct and shows all the information to the best of my knowledge and belief, required by the oil and gas section of the Mining Laws of West Virginia.

*O. C. Freeman*

Civil Engr.

Acknowledged before me a Notary Public of Doddridge County, this the 13th day of October, 1934.

*G. A. Kunkle*

Notary Public.

My commission expires

*Aug. 8th 1938.*

LATITUDE

39 15

80 47 30

LONGITUDE

→ 7.5' loc  
via 7/16/52

2.73S  
2.09W

7.5 ~~0.73~~ topo location

7.5' loc \_\_\_\_\_ 15' loc 0.73S  
(calc.) 4.32W

Company \_\_\_\_\_

Farm \_\_\_\_\_

Quad Oxford Holbrook <sup>NE</sup>

County \_\_\_\_\_

District W Union

WELL LOCATION MAP

File No. Dock 57

6-6 Straight Fork - Bluestone Creek (133)

Dodd. 57

# WEST VIRGINIA DEPARTMENT OF MINES

## OIL AND GAS DIVISION

### PRELIMINARY DATA SHEET NO. 1

File No. \_\_\_\_\_

Well No. 3.

J.D. Foley et al, Company of West Union, W. Va.

on the Mary J. Minear Farm

containing 5 acres. Location Arnolds Creek,

West Union, District, in Doddridge County, West Virginia

The surface of the above tract is owned in fee by Mary J. Minear, Laura Minear

of West Union, W. Va., R.F.D. No. 1, address, and the mineral rights are owned by

Laura Minear of West Union, W. Va., R.F.D. No. 1

The oil and gas privileges are held under lease by the above named company, and this well is drilled under permit

No. Dod-57, issued by the West Virginia Department of Mines, Oil and Gas Division

December 4, 1934.

Elevation of surface at top of well, 1075 Submit Barometric.

The number of feet of the different sized casings used in the well.

16 feet 13" size. Wood conductor.

624 feet 10" size, csg. 1179" feet 8 1/4" sized csg.

1902" feet 6-5/8" size, csg. \_\_\_\_\_ feet \_\_\_\_\_ sized csg.

\_\_\_\_\_ feet \_\_\_\_\_ size, csg. \_\_\_\_\_ feet \_\_\_\_\_ sized csg.

None. packer of \_\_\_\_\_ size, set at \_\_\_\_\_

\_\_\_\_\_ packer of \_\_\_\_\_ size, set at \_\_\_\_\_

none. in casing perforated at \_\_\_\_\_ feet to \_\_\_\_\_ feet.

\_\_\_\_\_ in casing perforated at \_\_\_\_\_ feet to \_\_\_\_\_ feet.

Coal was encountered at 700 feet, thick ness show inches, and at \_\_\_\_\_

feet; thickness \_\_\_\_\_ inches; and at \_\_\_\_\_ feet; thickness \_\_\_\_\_ inches.

Liners were used as follows: (Give details) none.

\_\_\_\_\_

\_\_\_\_\_

\_\_\_\_\_

\_\_\_\_\_

July 31, 1935. Date.



Approved J.D. Foley Etal, Owner.

By J.D. Foley Manager.

J.D. Foely et al. Company

COMPLETION DATA SHEET

West Union, Va. Address

No. 2

WELL No. 3 FARM Mary J. Minear

FORMATION RECORD

Name	Color	Character	Oil, Gas or Water	Top	Bottom	Thickness	Total Depth	Remarks
Hurry up Sand,				545	598	53		
Pittsburgh Coal,				700	700	Blossom.		
Big Dunkard Sand,				1175	1205	30		
Gas Sand,			Show oil.	1250	1318	68		
1st Salt Sand,				1385	1425	40		
2nd Salt Sand,				1515	1630	115		
Show Oil,			3 B. water	1350				
3rd Salt Sand,				1637	1680	43		
Sand & Lime,				1710	1850	140		
Maxon Sand,				1870	1907	37		
Water,			10 B.pr hr.		1880			
Little Lime,				1936	1948	12		
Blue Monday,				1948	1988	40		
Gas,	(Small show),				1953			
Pencil Cave,				1988	1995	7		
Big Lime,				1995				
Oil,				2002	2006	4		
Total Depth,					2020			

Well was not shot at \_\_\_\_\_ feet; well was shot at \_\_\_\_\_ feet.

Fresh water at 1350. salt fresh water at 1880 feet.

Well was producing hole.

July 31, 1935. Date

Approved *J D Foely* Owner

NOTE: All bottom formations must be noted as indicated above and all key-rocks and oil and gas sands must be recorded under their proper geological names in the district as well as any local names commonly used in the district for such strata.

