

LATITUDE

39 15

80 4730

LONGITUDE

→ 7.5' loc  
via 7/16/92

0.815  
2.06W

7.5' ~~loc~~ topo location

7.5' loc \_\_\_\_\_  
\_\_\_\_\_

15' loc 0.815  
(calc.) 4.29W

Company \_\_\_\_\_

Farm \_\_\_\_\_

Quad Oxford Hillsbrook

County \_\_\_\_\_

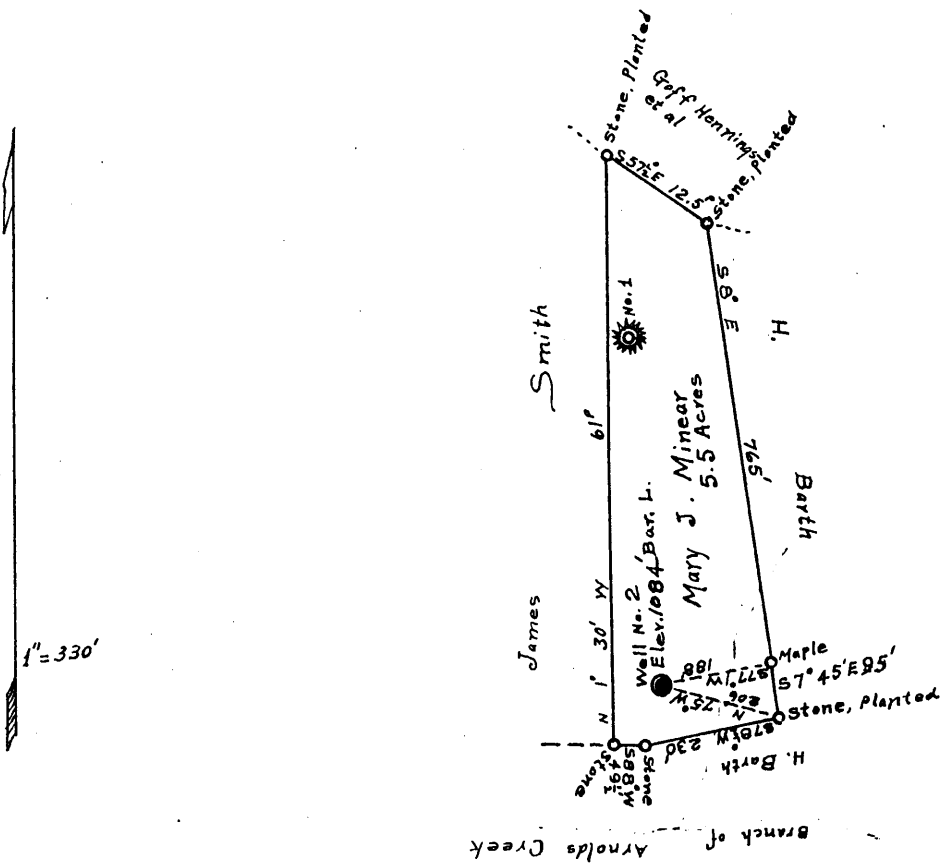
District West Union

WELL LOCATION MAP

File No. Dodd. 47

6-6 Straight Fork Silvercreek (133)

Plat of the proposed Location of Well No. 2 of the ~~Mary J.~~  
~~XXXXXXXXXX~~ James D. Foley and others, of West Union, West Virginia,  
 on the Mary J. Minear Farm, consisting of 5.5 Acres, located on  
 the waters of Arnold's Creek, in West Union District, Doddridge  
 County.



DOD-47

I, the undersigned, hereby certify that this Map is correct  
 and shows all the information to the best of my knowledge and  
 belief, required by the oil and gas section of the Mining Laws  
 of West Virginia.

*C. P. Freeman*

Civil Engr.

Acknowledged before me a Notary Public of Doddridge  
 this the 29<sup>th</sup> day of June, 1935.

*Gurville*

Notary Public.

My commission expires

Jan. 8, 1941

OCT 5 1933



STATE OF WEST VIRGINIA  
DEPARTMENT OF MINES  
OIL AND GAS DIVISION

WELL RECORD

Permit No. DOD-47

Oil or Gas Well gas well  
(KIND)

Company DePuy Brothers (Droppleman)  
Address Box 285, West Union, W. Va.  
Farm Mary J. Minear Acres \_\_\_\_\_  
Location (waters) \_\_\_\_\_  
Well No. 2 Elev. \_\_\_\_\_  
District West Union County Doddridge  
The surface of tract is owned in fee by Mary J. Minear  
Address West Union, W. Va.  
Mineral rights are owned by same party  
Address \_\_\_\_\_  
Drilling commenced after 1929#  
Drilling completed no record  
Date Shot none From \_\_\_\_\_ To \_\_\_\_\_  
With \_\_\_\_\_  
Open Flow 82 /10ths Water in 2 Inch  
/10ths Merc. in \_\_\_\_\_ Inch  
Volume no record Cu. Ft.  
Rock Pressure no record lbs. \_\_\_\_\_ hrs.  
Oil ###' bbls., 1st 24 hrs.  
Fresh water 1850' feet \_\_\_\_\_ feet  
Salt water none feet \_\_\_\_\_ feet

Casing and Tubing	Used in Drilling	Left in Well	Packers
Size			
16	14'	14'	Kind of Packer
13			
10	588'	588'	Size of
8 1/2	1148'	1148'	
6 1/2	1922'	1922'	Depth set
5 3/16			
3		2180'	Perf. top
2			Perf. bottom
Liners Used			Perf. top
			Perf. bottom

CASING CEMENTED no SIZE \_\_\_\_\_ No. Ft. \_\_\_\_\_ Date \_\_\_\_\_

COAL WAS ENCOUNTERED AT \_\_\_\_\_ FEET \_\_\_\_\_ INCHES  
564 FEET \_\_\_\_\_ INCHES FEET \_\_\_\_\_ INCHES  
FEET \_\_\_\_\_ INCHES FEET \_\_\_\_\_ INCHES

Formation	Color	Hard or Soft	Top	Bottom	Oil, Gas or Water	Depth Found	Remarks
sand			500'	585'			
Coal			654'	655'			Hurry up
sand			1045	1065'			Pittsburgh
sand			1140	1150			Dunkard
sand			1180	1255			B. Dunkard
sand			1285	1312			Gas sand
sand			1340	1395			1st salt
sand			1467	1580			2nd salt
sand			1590	no record			
sand			1832	1868	water	1850'	Maxton
lime			1895	1910			L. Lime
sand			1910	1929			B. Monday
lime			1929	2012			B. Lime
sand			2012	2086	gas	2012'	Injun sand
sand			2117	2175			Squaw
total depth			2186'				

