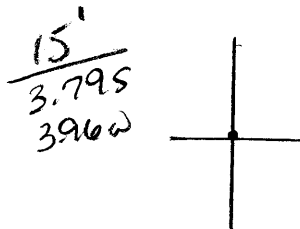


LATITUDE

38° 30' (15')

(15') 01° 18'

LONGITUDE



on west side of Porter Creek

Elev: 1000 B

7.5 OGIS topo location

7.5' loc _____ 15' loc _____
 _____ (calc.) _____

#192 on Map II of 1917 Clay Co Rept.

Company Eastern Carbon Brick

Farm W. H. Evans I

WELL LOCATION MAP

File No. 015-70115

Quad _____

County Clay

District Union