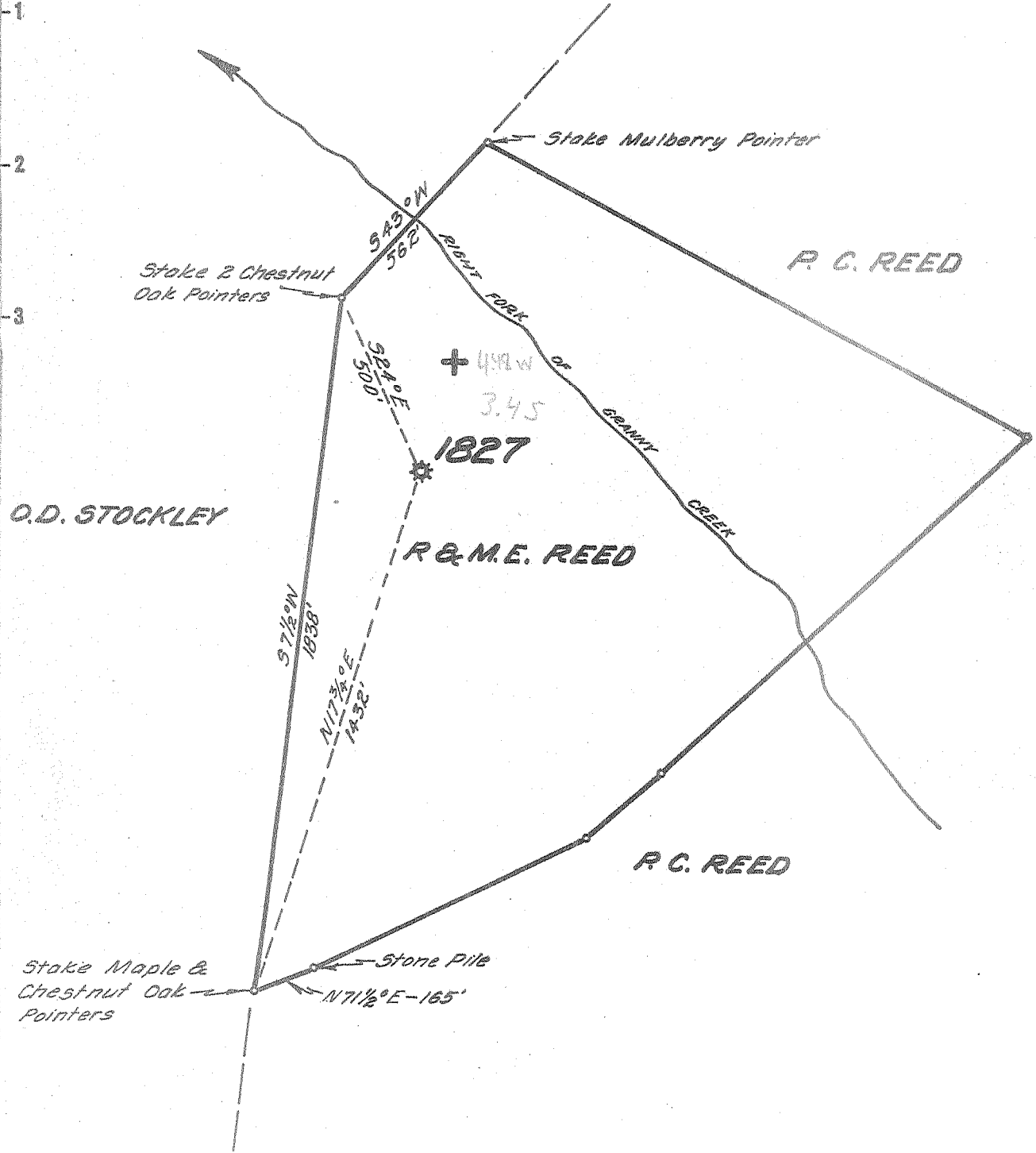


Latitude 38° 35'

Longitude 81° 05'



- New Location...
- Drill Deeper.....
- Abandonment.....

*Amended*  
*5-18-55*  
*ack*

Company UNITED FUEL GAS CO.  
 Address CHARLESTON, W. VA  
 Farm R. & M. E. REED  
 Tract \_\_\_\_\_ Acres 51 Lease No. 19564  
 Well (Farm) No. \_\_\_\_\_ Serial No. 1827  
 Elevation (Spirit Level) 1167  
 Quadrangle OTTER 50  
 County CLAY District HENRY  
 Engineer Paul E. Joaslin  
 Engineer's Registration No. 669  
 File No. 86-71 Drawing No. \_\_\_\_\_  
 Date 12-30-54 Scale 1"=400"

STATE OF WEST VIRGINIA  
 DEPARTMENT OF MINES  
 OIL AND GAS DIVISION  
 CHARLESTON

**WELL LOCATION MAP**  
 FILE NO. CLAY-83-A

+ Denotes location of well on United States Topographic Maps, scale 1 to 62,500, latitude and longitude lines being represented by border lines as shown.

- Denotes one inch spaces on border line of original tracing.



STATE OF WEST VIRGINIA  
DEPARTMENT OF MINES  
OIL AND GAS DIVISION

336

Quadrangle Otter

WELL RECORD

Permit No. 894

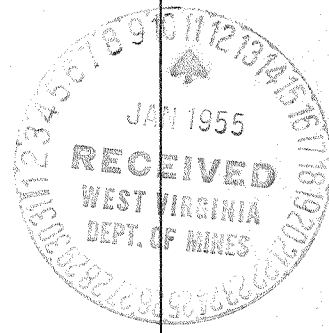
Oil or Gas Well Gas  
(KIND)

Company UNITED FUEL GAS CO.  
Address P.O. Box 1273, Charleston 25, W. Va.  
Farm R. & M. E. Reed Acres 51  
Location (waters) Granny Creek  
Well No. 1827 Elev. 1167'  
District Henry County Clay  
The surface of tract is owned in fee by \_\_\_\_\_  
Address \_\_\_\_\_  
Mineral rights are owned by Bertha Gilliam, et al  
418 Highway Ave. Address Ludlow, Ky.  
Drilling commenced 3-9-27  
Drilling completed 6-18-27  
Date Shot \_\_\_\_\_ From \_\_\_\_\_ To \_\_\_\_\_  
With \_\_\_\_\_  
Open Flow 6 /10ths Water in \_\_\_\_\_ Inch  
2 /10ths Merc. in \_\_\_\_\_ Inch  
Volume 431,040 Cu. Ft.  
Rock Pressure 460 lbs. \_\_\_\_\_ hrs.  
Oil \_\_\_\_\_ bbls., 1st 24 hrs.  
Fresh water \_\_\_\_\_ feet \_\_\_\_\_ feet  
Salt water \_\_\_\_\_ feet \_\_\_\_\_ feet

| Casing and Tubing | Used in Drilling | Left in Well    | Packers               |
|-------------------|------------------|-----------------|-----------------------|
| Size              |                  |                 | Kind of Packer        |
| 16                |                  |                 |                       |
| 18                |                  |                 | <u>Parmaco Anchor</u> |
| 10                |                  | <u>30'</u>      | Size of               |
| 8 1/4             |                  | <u>300'</u>     | <u>3x6-5/8x16</u>     |
| 6 5/8             |                  | <u>1883'</u>    | Depth set             |
| 5 3/16            |                  |                 | <u>1973'</u>          |
| 3                 |                  | <u>1999' 7"</u> | Perf. top             |
| 2                 |                  |                 | Perf. bottom          |
| Liners Used       |                  |                 | Perf. top             |
|                   |                  |                 | Perf. bottom          |

CASING CEMENTED \_\_\_\_\_ SIZE \_\_\_\_\_ No. Ft. \_\_\_\_\_ Date \_\_\_\_\_  
COAL WAS ENCOUNTERED AT \_\_\_\_\_ FEET \_\_\_\_\_ INCHES  
\_\_\_\_\_ FEET \_\_\_\_\_ INCHES \_\_\_\_\_ FEET \_\_\_\_\_ INCHES  
\_\_\_\_\_ FEET \_\_\_\_\_ INCHES \_\_\_\_\_ FEET \_\_\_\_\_ INCHES

| Formation      | Color | Hard or Soft | Top   | Bottom | Oil, Gas or Water                  | Depth Found | Remarks |
|----------------|-------|--------------|-------|--------|------------------------------------|-------------|---------|
| Soil           |       |              | 0     | 30     | Show of gas 1965'<br>Gas 1984-1987 |             |         |
| Red Rock       |       |              | 30    | 72     |                                    |             |         |
| Slate          |       |              | 72    | 150    |                                    |             |         |
| Slate & Shells |       |              | 150   | 250    |                                    |             |         |
| Lime           |       |              | 250   | 290    |                                    |             |         |
| Sand           |       |              | 290   | 500    |                                    |             |         |
| Slate          |       |              | 500   | 530    |                                    |             |         |
| Sand           |       |              | 530   | 655    |                                    |             |         |
| Slate          |       |              | 655   | 705    |                                    |             |         |
| Sand           |       |              | 705   | 755    |                                    |             |         |
| Slate          |       |              | 755   | 800    |                                    |             |         |
| Sand           |       |              | 800   | 830    |                                    |             |         |
| Lime           |       |              | 830   | 900    |                                    |             |         |
| Slate & Shells |       |              | 900   | 1020   |                                    |             |         |
| Sandy Lime     |       |              | 1020  | 1115   |                                    |             |         |
| Slate          |       |              | 1115  | 1225   |                                    |             |         |
| Sand           |       |              | 1225  | 1260   |                                    |             |         |
| Slate          |       |              | 1260  | 1280   |                                    |             |         |
| Lime Shells    |       |              | 1280  | 1305   |                                    |             |         |
| Sand           |       |              | 1305  | 1330   |                                    |             |         |
| Slate          |       |              | 1330  | 1360   |                                    |             |         |
| Salt Sand      |       |              | 1360  | 1745   |                                    |             |         |
| Slate          |       |              | 1745  | 1755   |                                    |             |         |
| Red Rock       |       |              | 1755  | 1760   |                                    |             |         |
| Slate          |       |              | 1760  | 1790   |                                    |             |         |
| Maxon Sand     |       |              | 1790  | 1825   |                                    |             |         |
| Slate          |       |              | 1825  | 1831   |                                    |             |         |
| Little Lime    |       |              | 1831  | 1855   |                                    |             |         |
| Slate          |       |              | 1855  | 1860   |                                    |             |         |
| Blue Sand      |       |              | 1860  | 1873   |                                    |             |         |
| Pencil Cave    |       |              | 1873  | 1880   |                                    |             |         |
| Big Lime       |       |              | 1880  | 1984   |                                    |             |         |
| Big Injun      |       |              | 1984  |        |                                    |             |         |
| Total depth    |       |              | 1987' |        |                                    |             |         |



JUN 17 1955

