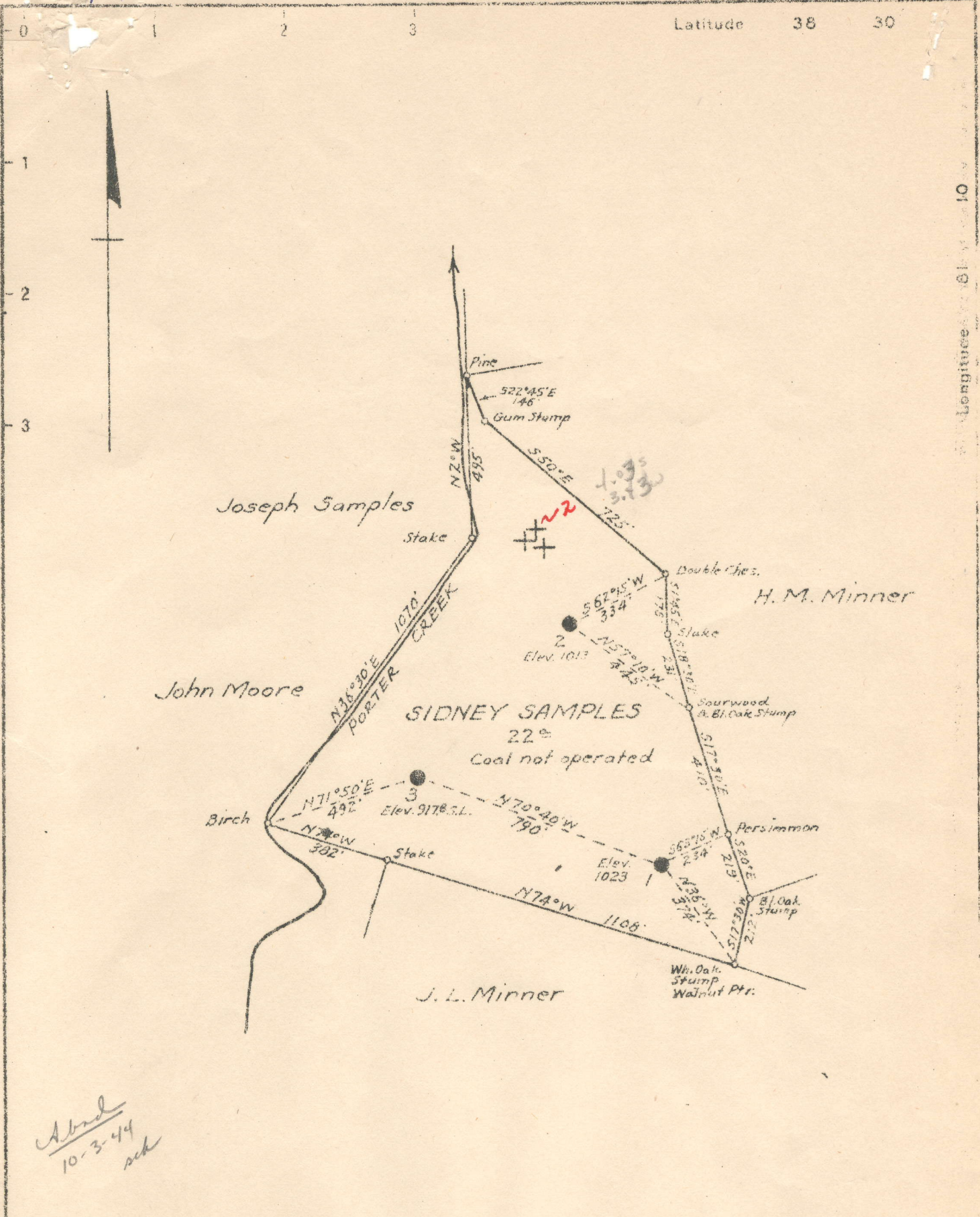


m

Latitude 38 30

Longitude 81 10



*Abnd
10-3-44
sch*

New Location
 Drill Deeper
 Abandonment

Company	SUPERIOR PIPE & SUPPLY CO.
Address	GRAND RAPIDS, MICH.
Farm	SIDNEY SAMPLES
Tract	Acres 22 Lease No.
Well (Farm) No.	1-2-3 Serial No.
Elevation (Spirit Level)	AS SHOWN
Quadrangle	CLAY
County	CLAY District JUNION
Engineer	<i>J. L. Cunningham</i>
Engineer's Registration No.	659
File No.	Drawing No.
Date	JAN. 20, 1944 Scale 1" = 400'

STATE OF WEST VIRGINIA
 DEPARTMENT OF MINES
 OIL AND GAS DIVISION
 CHARLESTON

WELL LOCATION MAP

FILE NO. CLA-23-A-1
~~CLA-32-A-2~~
~~CLA-34-A-3~~

+ Denotes location of well on United States Topographic Maps, scale 1 to 62,500 latitude and longitude lines being represented by border lines as shown.

- Denotes one inch spaces on border line of original tract.

10-6 (222)

SIDNEY SAMPLES NO. 2 (1027) WELL.

Union District, Clay County, W. Va.
 By United Fuel Gas Co., Charleston, W. Va.
 Abandoned under permit Clay-33-A.
 Drilling commenced Nov. 9, 1918; completed June 7, 1919.
 Contractor: M. C. Kifer, Charleston, W. Va.
 Drillers' names: E. D. Williamson, Ed. McCristan.
 10" casing, 15'; 8 $\frac{1}{4}$ ", 605'; 6 $\frac{5}{8}$ ", 1738'; 5 $\frac{3}{8}$ ", 1747'; all left in.
 Shot June 17, 1919, with 60 qts., at 1888-1902'.
 B. H. packer.
 Oil, pumped 18 bbls., 1st day.
 Elevation, 1013' B.
 Abandonment reported to Dept. of Mines (filed) Mar. 28, 1944.
 Record to RCT from Mrs. Griffith Nov. 17, 1944. Old File No. 258.

	Top.	Bottom.
Soil	0	15
Sand	15	85
Slate	85	100
Sand	100	250
Slate	250	255
Sand (hole full water, 300')	255	300
Lime	300	320
Sand	320	345
Coal	345	352
Limy slate	352	405
Sand	405	440
Slate and shells	440	600
Big Dunkard Sand	600	670
Broken shells	670	940
Gas Sand	940	990
Broken shells	990	1100
Salt Sand	1100	1400
Slate	1400	1430
Lime	1430	1480
Red rock	1480	1485
Lime	1485	1500
Red rock	1500	1510
Lime	1510	1600
Red rock	1600	1605
Lime	1605	1630
Maxton Sand	1630	1650
Slate	1650	1660
Little Lime	1660	1690
Broken.....	1690	1700
Sandy lime, very hard	1700	1712
Slate	1712	1721
Big Lime	1721	1836
Keener Sand	1836	1842
Broken.....	1842	1862
Big Injun Sand (oil pay, 1892-1903')	1862	1902
Total depth (SIM)		1903
SIM's, 1721, 1738, 1747, 1892, 1903'		

Serial Well No. 1027

Lease No. 12565

Sqs 82-65

RECORD OF WELL No. **2** on the
Sidney Samples Farm of Acres
Union District
Clay County
 Field, State of **W. Va.**

CASING AND CONDUCTOR		
SIZE	USED IN DRILLING	LEFT IN WELL
Conductor		
13"		
10"	15	15
8 1/4"	605	605
8"		
7 3/4"		
6 3/4"	1738	1738
6 1/4"		
5 3/8"		
5 3-16"	1747	1747
4 3/4"		

GAS WELL			
OPEN FLOW			
in.		inch casing	
At Centre		At 1-7 Diam	
Pounds	Ounces	Pounds	Ounces
CLOSED IN			
in Tubing Casing			
1 Min.			Pounds
2 Min.			Pounds
3 Min.			Pounds
4 Min.			Pounds
5 Min.			Pounds
Rock Pressure		Pounds	

Rig Commenced 19
 Rig Completed 19
 Drilling Commenced **11-9-** **1918**
 Drilling Completed **6-7-** **1919**
 Drilling to cost per foot
 Contractor is: **M.C.Kifer**
 Address: **Charleston W. Va.**

Drillers' Names **E.D. Williamson**
Ed. McCristen

Shot **6-17** **1919**
 Size of Torpedo **40 qts.**
 Top **1888**
 Bottom **1902**
 Size of Tubing inch
 Size of Packer
 Kind of Packer **B.H.**
 Set ft. from

OIL WELL
 Size of Rods
 Kind of Rods
 Wells abandoned and plugged 19

1st DAY'S PRODUCTION

Gas calculated to be 000 cubic feet
 Oil flowed barrels, pumped **18** barrels

Elevation 1013 B.

DRILLER'S RECORD

FORMATION	TOP	BOTTOM	THICKNESS	REMARKS	DATE
Soil		15	15		
Sand	15	85	70	Oil Pay 1892-1903	
Slate	85	100	15	Steel Line measurements	
Sand	100	250	150	1721 1738 1747 1892 1903	
Slate	250	255	5		
Sand	255	300	45		
Hole full water		300			
Lime	300	320	20		
Sand	320	345	25		
Coal	345	352	7		
Limey Slate	352	405	53		
Sand	405	440	35		
Slate & Shells	440	600	160		
Big Dunkard	600	670	70		
Broken Shells	670	940	240		
Gas Sand	940	990	50		
Broken Shells	990	1100	110		
Salt and	1100	1400	300		
Slate	1400	1430	30		
Lime	1430	1480	50		
Red Rock	1480	1485	5		
Lime	1485	1500	15		
Red Rock	1500	1510	10		
Lime	1510	1600	90		
Red Rock	1600	1605	5		
Lime	1605	1630	25		
Maxon Sand	1630	1650	20		
Slate	1650	1660	10		
Little Lime	1660	1690	30		
Broken 1/2	1690	1700	10		
Sandy Lime (Very hard)	1700	1712	12		
Slate	1712	1721	9		
Big Lime	1721	1806	115		
Keener Sand	1836	1842	6		
Broken	1842	1862	20		
Big Injun	1862	1902	40		
Total Depth		1903			