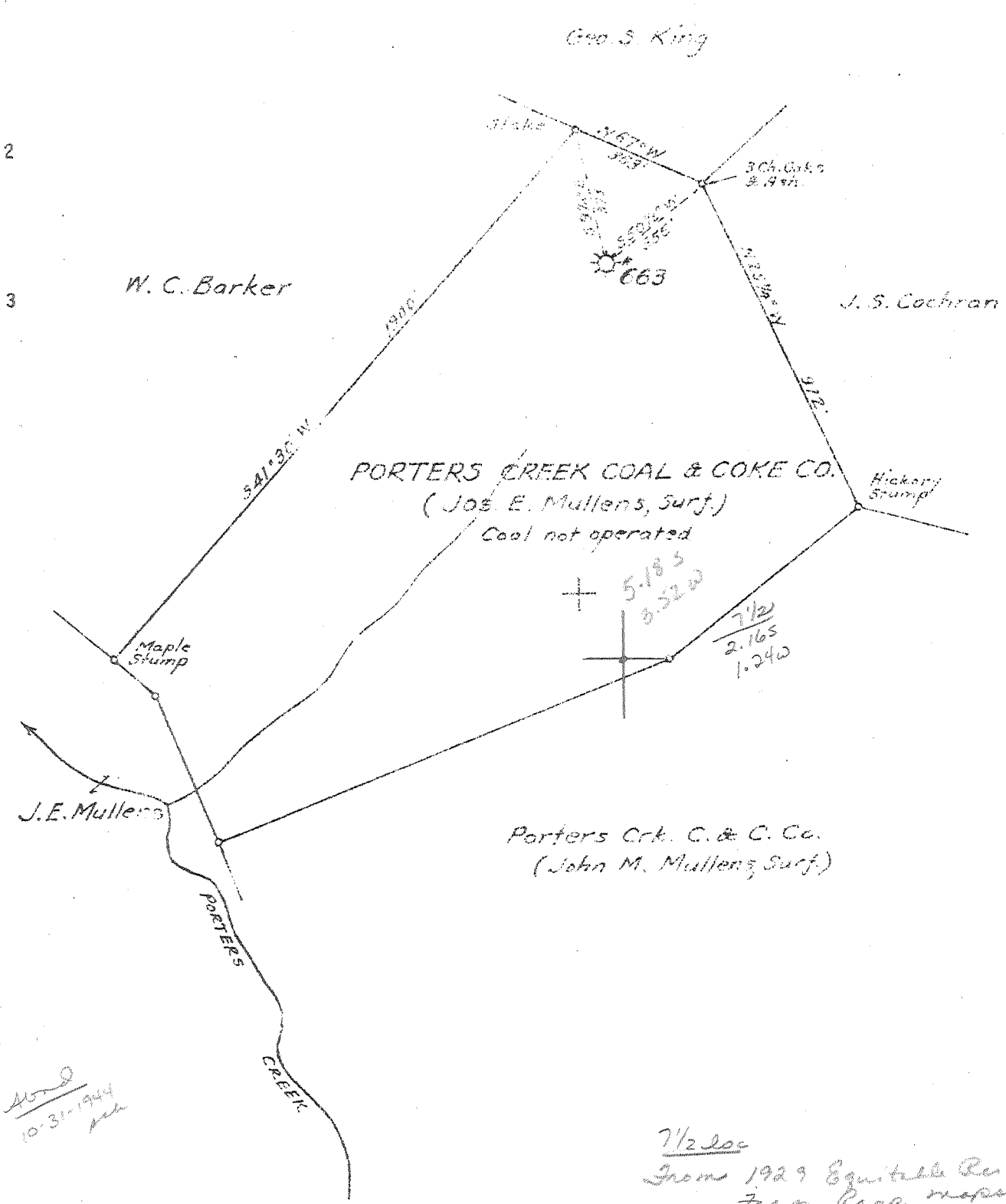


Latitude 38° 27' 30"

Longitude 81° 12' 30"



10-31-1944
Mh

7 1/2 loc
From 1929 Equitable Re
Farm Prop. maps
Mh
4-2-91

New Location
Drill Deeper
Abandonment X

Company UNITED FUEL GAS CO.
 Address CHARLESTON, W.V.
 Farm PORTERS CREEK COAL & COKE CO.
 Tract Acres 47 Lease No. 12659
 Well (Farm) No. 1 Serial No. 663
 Elevation (Spirit Level) 1236.5
 Quadrangle CLAY NW 1/4 Khung 7 1/2
 County CLAY District UNION
 Engineer G. A. Cunningham
 Engineer's Registration No. 659
 File No. 82-63 Drawing No.
 Date APR. 21, 1944 Scale 1" = 400'

STATE OF WEST VIRGINIA
 DEPARTMENT OF MINES
 OIL AND GAS DIVISION
 CHARLESTON

WELL LOCATION MAP
 FILE NO. CLA-19-A

+ Denotes location of well on United States Topographic Map, scale of 1" = 500'. Latitude and longitude lines being represented by border lines as shown.
 - Denotes one inch spaces on border of map, tracing.

6-6 (224)

PORTER CREEK COAL & COKE CO. NO. 663 WELL RECORD.

(No. 231 on Map II).

Clay 19A

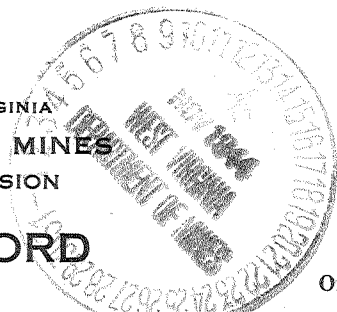
Union District, Clay County, on east hillside of Porter Creek, 0.5 mile southeast of Odessa; authority, United Fuel Gas Co.; completed December 4, 1913; elevation, 1255' B.
(Record from pp. 441-4 of Braxton-Clay Report).

	Thickness. Total.	
	Feet.	Feet.
Clay	30	- 30
Sand, Upper Freeport	122	- 152
Slate	15	- 167
Sand, Lower Freeport	58	- 225
Coal, Upper Kittanning	2	- 227
Sand, Upper East Lynn and East Lynn	208	- 435
Slate	20	- 455
Sand, Homewood	45	- 500
Coal, Stockton	4	- 504
Sand	121	- 625
Slate	135	- 760
Sand	55	- 815
Slate and lime	225	- 1040
Sand 50')		
Slate 7) Rosedale Gas	135	- 1175
Sand 78)		
Sand, Rosedale Salt (hole full of water at 1300')	525	- 1700
Red rock	58	- 1758
Lime	5	- 1763
Red rock	87	- 1850
Lime	15	- 1865
Red rock	50	- 1915
Slate and lime	30	- 1945
Little Lime	23	- 1968
Break	7	- 1975
Lime	13	- 1988
Pencil Cave	12	- 2000
Big Lime	84	- 2084
Sand, Keener (gas at 2097'; break at 2109-2116')	25	- 2109
Sand, Big Injun	66	- 2175
Slate	42	- 2217
Sand, Squaw	20	- 2237
Slate and lime to bottom	248	- 2485

The above well, examined by Gawthrop, starts 225 feet above the Upper Kittanning Coal bed, and encountered a light pay of gas in the Keener Sand, its volume being about 190,000 cubic feet daily.



STATE OF WEST VIRGINIA
DEPARTMENT OF MINES
OIL AND GAS DIVISION



262

WELL RECORD

Oil or Gas Well **GAS**
(KIND)

Permit No. 19-A

Company United Fuel Gas Company

Address Charleston, West Virginia

Farm Porter Creek Coal & Coke Co. Acres 47

Location (waters) Porter Creek

Well No. 663 Elev. 1236.5

District Union County Clay

The surface of tract is owned in fee by _____
Address _____

Mineral rights are owned by Porter Creek Coal & Coke Co.
Address Uniontown, Pa.

Drilling commenced September 16, 1913

Drilling completed December 4, 1913

Date Shot 3-21-28 From 2114 To 2155

With 20 Qts.

Open Flow _____ /10ths Water in _____ Inch
_____ /10ths Merc. in _____ Inch

Volume 200,000 Cu. Ft.

Rock Pressure _____ lbs. _____ hrs.

Oil _____ bbls., 1st 24 hrs.

Fresh water _____ feet _____ feet

Salt water 1350 feet _____ feet

Casing and Tubing	Used in Drilling	Left in Well	Packers
Size			Kind of Packer
16			
13			
10	30	30	Size of
8 1/4	581	-	
6 5/8	1860	Pulled	Depth set
5 3/16	2010	2010	
3			Perf. top
2			Perf. bottom
Liners Used			Perf. top
			Perf. bottom

CASING CEMENTED _____ SIZE _____ No. Ft. _____ Date _____

COAL WAS ENCOUNTERED AT 225 FEET 24 INCHES
_____ FEET _____ INCHES 500 FEET 48 INCHES
_____ FEET _____ INCHES _____ FEET _____ INCHES

Formation	Color	Hard or Soft	Top	Bottom	Oil, Gas or Water	Depth Found	Remarks
Clay				30			
Sand			30	152			
Slate			152	167			
Sand			167	225			
Coal			225	227			
Sand			227	435			
Slate			435	455			
Sand			455	500			
Coal			500	504			
Sand			504	625			
Slate			625	760			
Sand			760	815			
Slate & Lime			815	1040			
Little Dunkard			1040	1090			
Slate			1090	1097			
Big Dunkard			1097	1175			
Salt Sand			1175	1700	Water	1350	Hole full
Red Rock			1700	1758			
Lime			1758	1763			
Red Rock			1763	1850			
Lime			1850	1865			
Red Rock			1865	1915			
Slate & Lime			1915	1945			
Little Lime			1945	1968			
Break			1968	1975			
Lime			1975	1988			
Pencil Cave			1988	2000			
Big Lime			2000	2084			
Keener Sand			2084	2109	Gas	2097	
Break			2109	2116			
Injun Sand			2116	2175			
Slate			2175	2217			
Squaw Sand			2217	2237			
Slate & Lime			2237	2485			
Total Depth				2485			Plugged back with stone to 2198

(Over)

NOV 17 1944

