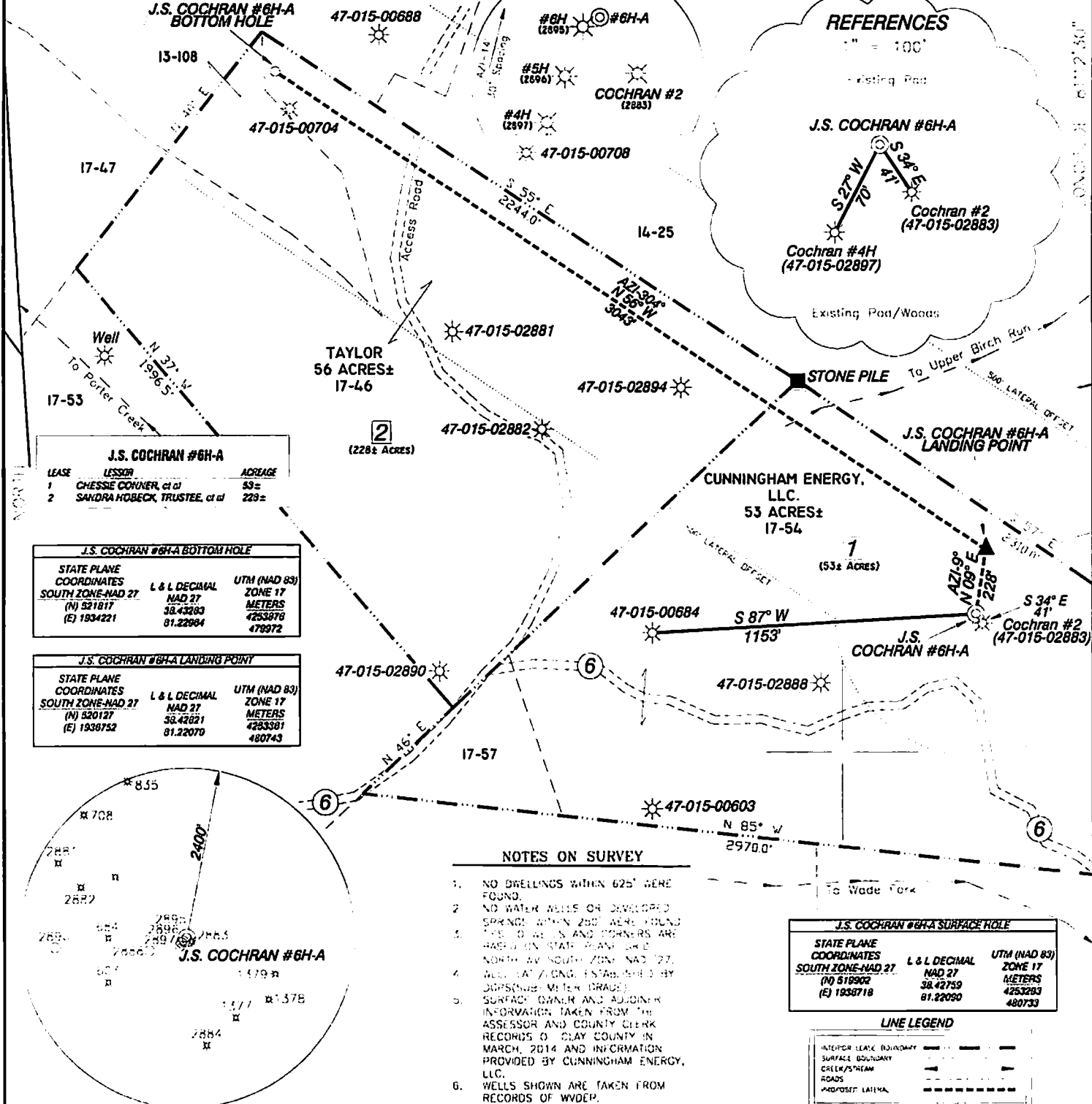


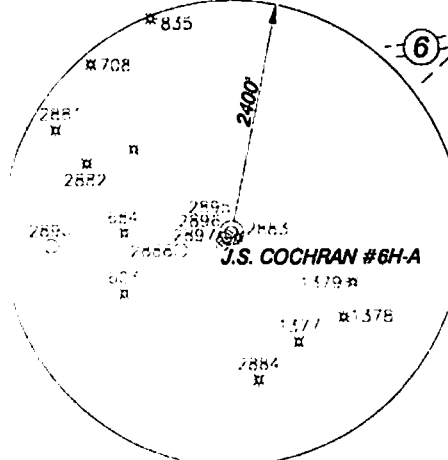
J.S. COCHRAN #6H-A



J.S. COCHRAN #6H-A		
LEASE	LESSOR	ACREAGE
1	CHESIE CORNER, et al	53±
2	SAKDRA HOBECK, TRUSTEE, et al	228±

J.S. COCHRAN #6H-A BOTTOM HOLE		
STATE PLANE COORDINATES	L & L DECIMAL	UTM (NAD 83)
SOUTH ZONE-NAD 27	NAD 27	ZONE 17
(N) 521817	38.43283	METERS
(E) 1934221	81.22084	479372

J.S. COCHRAN #6H-A LANDING POINT		
STATE PLANE COORDINATES	L & L DECIMAL	UTM (NAD 83)
SOUTH ZONE-NAD 27	NAD 27	ZONE 17
(N) 520127	38.42821	METERS
(E) 1938752	81.22079	4253381
		480743



- NOTES ON SURVEY**
- NO DWELLINGS WITHIN 625' WERE FOUND.
 - NO WATER WELLS OR DEVELOPED SPRINGS WITHIN 250' WERE FOUND.
 - ALL BEARINGS AND CORNERS ARE BASED ON STATE PLANE 14-C NORTH BY SOUTH ZONE-NAD 27.
 - WELL Casing LONG. ESTABLISHED BY SURFACE METER (DRAPE).
 - SURFACE OWNER AND ADJOINER INFORMATION TAKEN FROM THE ASSESSOR AND COUNTY CLERK RECORDS OF CLAY COUNTY IN MARCH, 2014 AND INFORMATION PROVIDED BY CUNNINGHAM ENERGY, LLC.
 - WELLS SHOWN ARE TAKEN FROM RECORDS OF WVDEP.

J.S. COCHRAN #6H-A SURFACE HOLE		
STATE PLANE COORDINATES	L & L DECIMAL	UTM (NAD 83)
SOUTH ZONE-NAD 27	NAD 27	ZONE 17
(N) 518902	38.42759	METERS
(E) 1938718	81.22090	4253283
		480733

LINE LEGEND

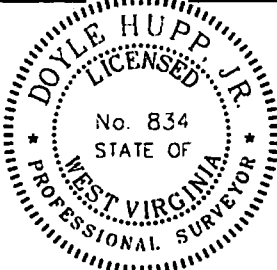
- INTERIOR LEASE BOUNDARY
- SURFACE BOUNDARY
- CREEK/STREAM
- ROADS
- PROPOSED LATERAL

I, THE UNDERSIGNED, HEREBY CERTIFY THAT THIS PLAT IS CORRECT TO THE BEST OF MY KNOWLEDGE AND BELIEF AND SHOWS ALL THE INFORMATION REQUIRED BY LAW AND THE RULES ISSUED AND PRESCRIBED BY THE DEPARTMENT OF ENVIRONMENTAL PROTECTION.

P.S. 834

Doyle Hupp Jr.

HUPP Surveying & Mapping
 P.O. Box 647 Grantsville, WV 26147
 (304) 354-7235 EMAIL: hupp@frontiernet.net



(+) DENOTES LOCATION OF WELL ON UNITED STATES TOPOGRAPHIC MAPS.

DATE JUNE 18, 20 14

OPERATORS WELL NO. J.S. COCHRAN #6H-A

API WELL NO. 47-015-02901 H

STATE WV COUNTY CLAY

MINIMUM DEGREE OF ACCURACY 1/2500 FILE NO. W2156 (BK71 58)

PROVIN SOURCE OF INFORMATION GPS(SUB-METER GRADE) SCALE 1" = 500'

STATE OF WEST VIRGINIA DIVISION OF ENVIRONMENTAL PROTECTION OFFICE OF OIL AND GAS

WELL TYPE: OIL GAS LIQUID INJECTION WASTE DISPOSAL IF "GAS" PRODUCTION STORAGE DEEP SHALLOW

LOCATION: ELEVATION 1,215' WATERSHED TRIBUTARY OF WADE FORK

DISTRICT UNION COUNTY CLAY QUADRANGLE ELKHORSE 7.5'

SURFACE OWNER CUNNINGHAM ENERGY, LLC. ACREAGE 53±

ROYALTY OWNER ALVIN ENGELKE, AGENT, et al LEASE ACREAGE 345.2±

PROPOSED WORK: LEASE NO. _____

DRILL CONVERT DRILL DEEPER REDRILL FRACTURE OR STIMULATE PLUG OFF OLD FORMATION PERFORATE NEW FORMATION PLUG AND ABANDON CLEAN OUT AND REPLUG OTHER _____

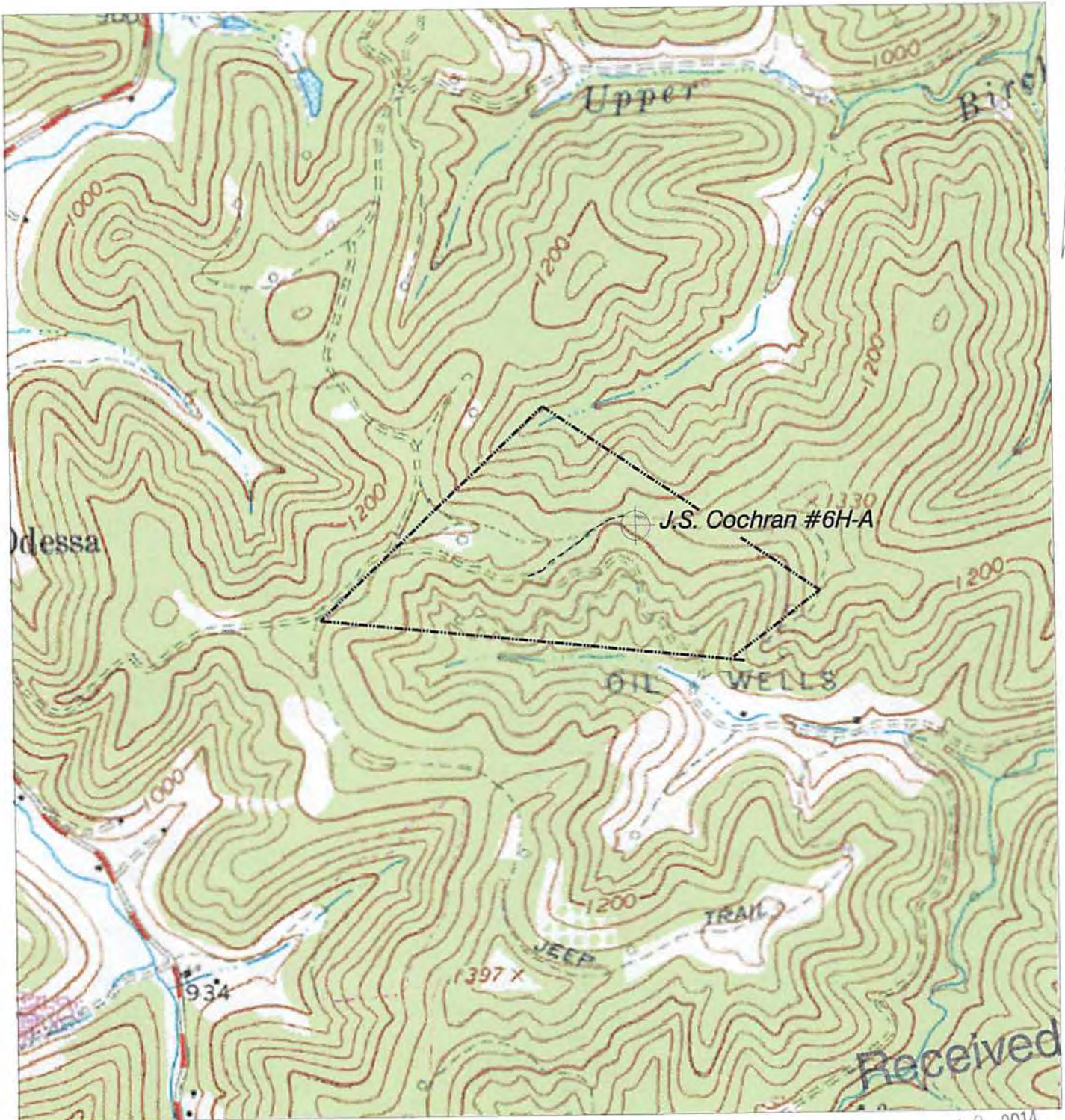
PHYSICAL CHANGE IN WELL (SPECIFY) _____ TARGET FORMATION BIG INJUN

ESTIMATED DEPTH TVD 2,150' MD 5,000'

WELL OPERATOR CUNNINGHAM ENERGY, LLC. DESIGNATED AGENT RYAN CUNNINGHAM

APPROVED BY: 354 PENNSYLVANIA AVE CHARLESTON, WV 25302 DATE 07/18/2014

CUNNINGHAM ENERGY J.S. Cochran #6H-A



NORTH

Received

JUN 18 2014

HUPP Surveying & Mapping

P.O. BOX 647 GRANTSVILLE, WV 26147
PH: (304)354-7035 E-MAIL: hupp@frontiernet.net

1" = 1000'
Elkhurst Quad

Cunningham Energy
3230 Pennsylvania Ave.
Charleston, WV 25302
Office of Oil and Gas
WV Dept. of Environmental Protection