

RECEIVED
Office of Oil & Gas



APR 02 2012

RECEIVED
Office of Oil & Gas
MAR 20 2012

West Virginia Department of Environmental Protection
Office of Oil and Gas

WELL LOCATION FORM: GPS

WV Department of Environmental Protection
APR 15 2012

API # 15-1592P WELL NO.: 114

FARM NAME: J.B. Costo

RESPONSIBLE PARTY NAME: Triad Hunter

COUNTY: Clay DISTRICT: Henry

QUADRANGLE: Newton

SURFACE OWNER: Ronald Starobac

ROYALTY OWNER: _____

UTM GPS NORTHING: ~~4329203~~ 4265826 ~~4265810~~

UTM GPS EASTING: ~~447234~~ 486706.2 GPS ELEVATION: 105⁴⁵

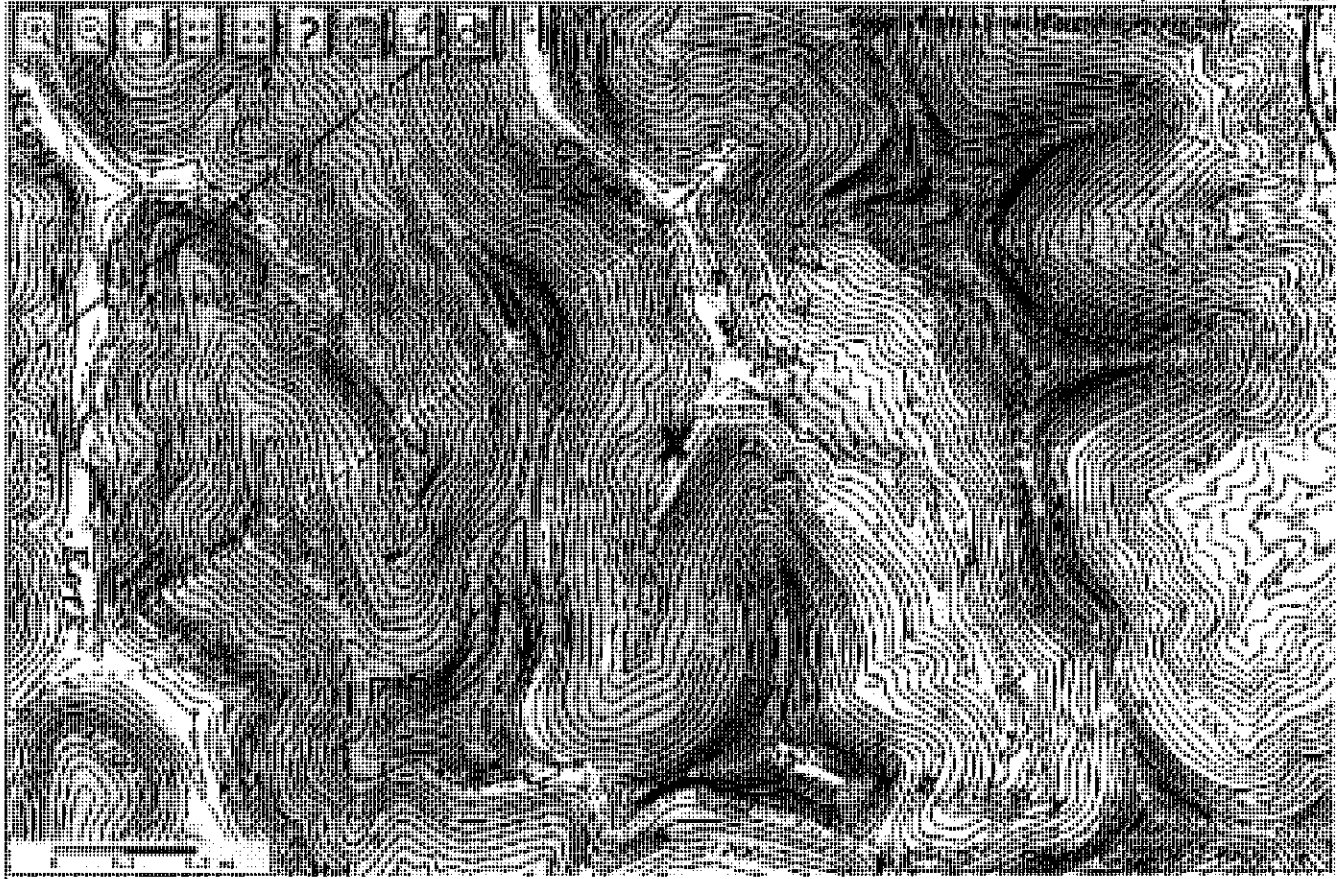
The Responsible Party named above has chosen to submit GPS coordinates in lieu of preparing a new well location plat for a plugging permit or assigned API number on the above well. The Office of Oil and Gas will not accept GPS coordinates that do not meet the following requirements:

1. Datum: NAD 1983, Zone: 17 North, Coordinate Units: meters, Altitude: height above mean sea level (MSL) -- meters.
2. Accuracy to Datum - 3.05 meters
3. Data Collection Method:
Survey grade GPS _____: Post Processed Differential _____
Real-Time Differential _____
Mapping Grade GPS _____: Post Processed Differential _____
Real-Time Differential _____

4. Letter size copy of the topography map showing the well location.
I the undersigned, hereby certify this data is correct to the best of my knowledge and belief and shows all the information required by law and the regulations issued and prescribed by the Office of Oil and Gas.

Steve Starobac Signature Title Date 2/5/12

15-015927



- map layers overview map locate query results help about
- on query layer
- County Boundaries
 - 2007 Aerial Photography
 - USGS Topographic Map
 - hillshade
 - FEMA Q3 Floodplain
 - Mining Permit Boundaries

legend

- county
-
-
-
-
-
- 100 Year
- 500 Year
- Not Started
- Inactive
- Active
- Reclamation
- Released
- Revoked

RECEIVED
Office of Oil & Gas

APR 02 2012

WV Department of
Environmental Protection

<http://gis.dep.wv.gov/imap/imap.php?x=486706.2&y=4265826&datum=NAD83&ex=150...> 4/27/2012