

15 01260A

WW-7
8-30-06



West Virginia Department of Environmental Protection
Office of Oil and Gas

WELL LOCATION FORM: GPS

API: 47-015-01260 WELL NO.: 1
FARM NAME: Clinchfield Coal
RESPONSIBLE PARTY NAME: Energy Corporation of America
COUNTY: Clay DISTRICT: Henry
QUADRANGLE: Clay 7-1/2 15'
SURFACE OWNER: The Forestland Group LLC
ROYALTY OWNER: Range Resources
UTM GPS NORTHING: 4,256,391.44
UTM GPS EASTING: 493,846.17 GPS ELEVATION: 250m 821 FT

The Responsible Party named above has chosen to submit GPS coordinates in lieu of preparing a new well location plat for a plugging permit or assigned API number on the above well. The Office of Oil and Gas will not accept GPS coordinates that do not meet the following requirements:

- Datum: NAD 1983, Zone: 17 North, Coordinate Units: meters, Altitude: height above mean sea level (MSL) – meters.
- Accuracy to Datum – 3.05 meters
- Data Collection Method:
Survey grade GPS ___ : Post Processed Differential ___
Real-Time Differential ___

Mapping Grade GPS X : Post Processed Differential ___
Real-Time Differential X

4. **Letter size copy of the topography map showing the well location.**

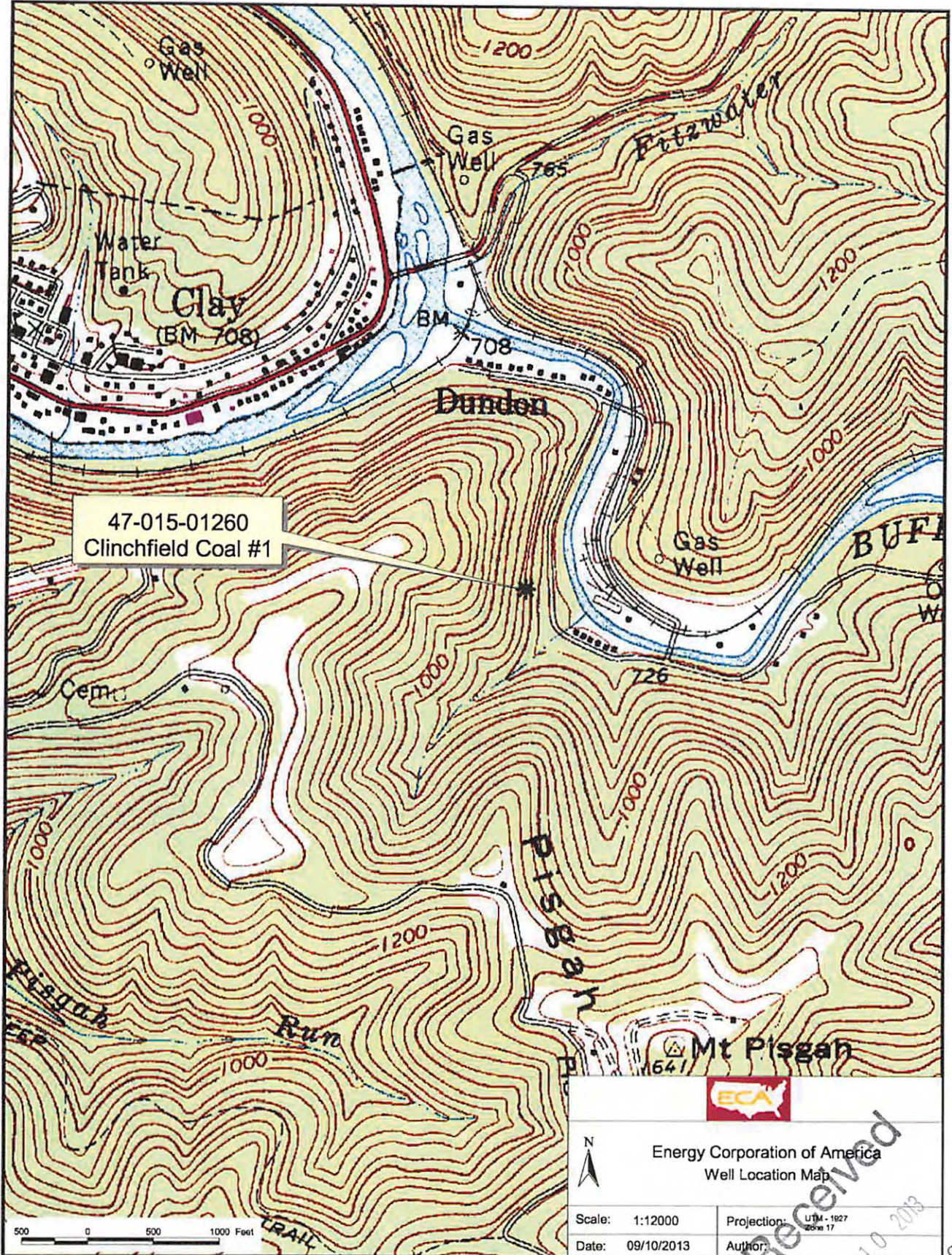
I the undersigned, hereby certify this data is correct to the best of my knowledge and belief and shows all the information required by law and the regulations issued and prescribed by the Office of Oil and Gas.

Alan Poltney
Signature

Drilling Engineer
Title

9-10-13
Date

Received
SEP 10 2013
Office of Oil and Gas
WV Dept. of Environmental Protection



47-015-01260
Clinchfield Coal #1



Energy Corporation of America
Well Location Map

Scale: 1:12000	Projection: UTM - 1827 26N 17
Date: 09/10/2013	Author:

Received
SEP 10 2013

Office of Oil and Gas
WV Dept. of Environmental Protection