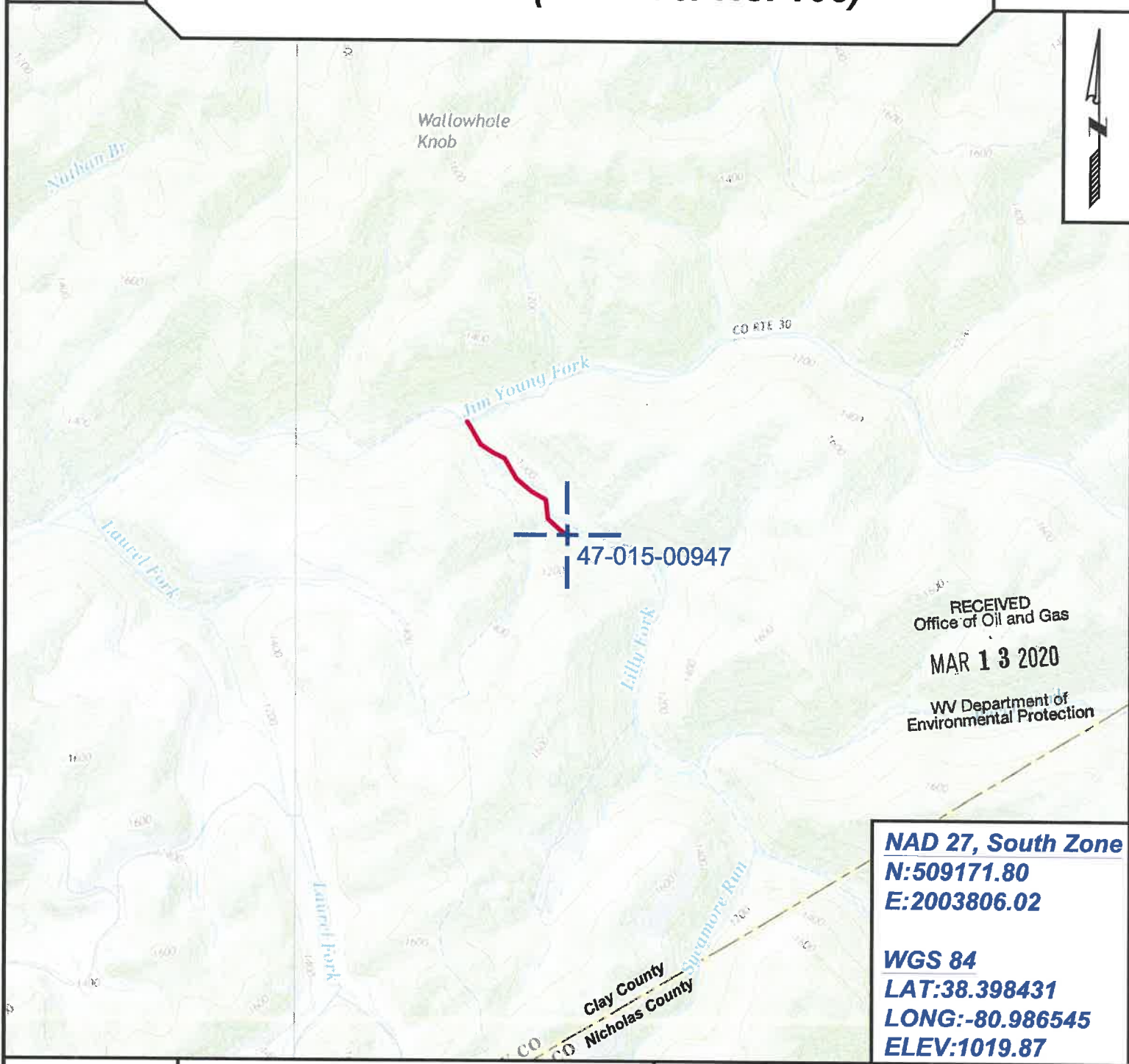


Topo Quad: Swandale 7.5' Scale: 1" = 2000'
 County: Clay Date: February 26, 2020
 District: Henry Project No: 44-04-H-20

47-015-00947 (Elk River No. 108)

Topo



NAD 27, South Zone
N:509171.80
E:2003806.02

WGS 84
LAT:38.398431
LONG:-80.986545
ELEV:1019.87



SURVEYING AND MAPPING SERVICES PERFORMED BY:
ALLEGHENY SURVEYS, INC.
 1-800-482-8606
 237 Birch River Road
 Birch River, WV 26610
 PH: (304) 649-8606
 FAX: (304) 649-8608

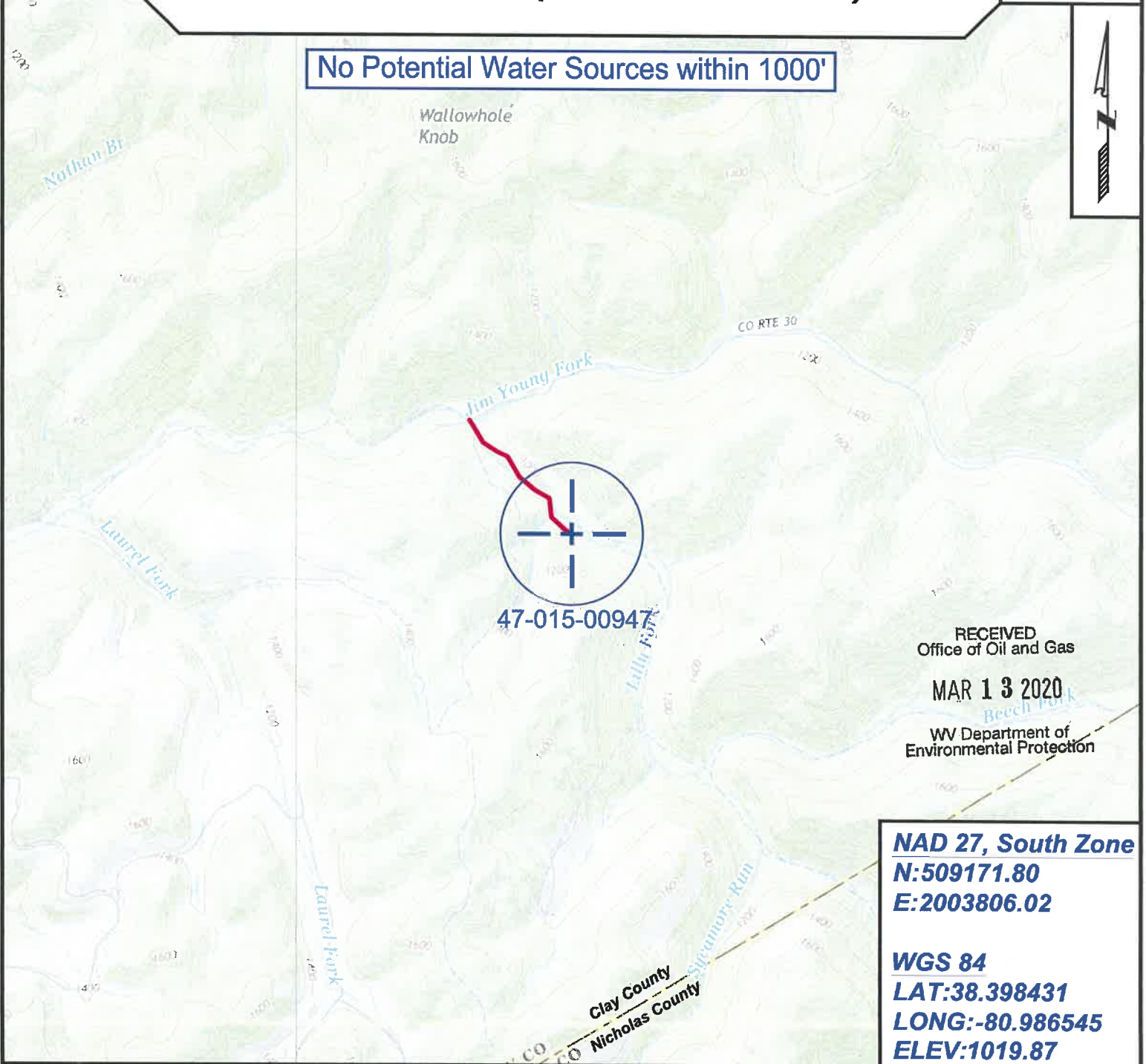
PREPARED FOR:
Range Resources
 1369 Cochran Road
 Carlton, PA 16311

Topo Quad: Swandale 7.5' Scale: 1" = 2000' 47-015-00947P
County: Clay Date: February 26, 2020
District: Henry Project No: 44-04-H-20

Water

47-015-00947 (Elk River No. 108)

No Potential Water Sources within 1000'



RECEIVED
Office of Oil and Gas
MAR 13 2020
WV Department of
Environmental Protection

NAD 27, South Zone
N:509171.80
E:2003806.02

WGS 84
LAT:38.398431
LONG:-80.986545
ELEV:1019.87



SURVEYING AND MAPPING SERVICES PERFORMED BY:
ALLEGHENY SURVEYS, INC.

1-800-482-8606
237 Birch River Road
Birch River, WV 26610
PH: (304) 649-8606
FAX: (304) 649-8608

PREPARED FOR:

Range Resources

1369 Cochran Road
Carlton, PA 16311