

WW-7
8-30-06

RECEIVED
Office of Oil & Gas

NOV 21 2011



WV Department of
Environmental Protection

West Virginia Department of Environmental Protection
Office of Oil and Gas
WELL LOCATION FORM: GPS

API: 47-015-00457 Y WELL NO.: 8074

FARM NAME: Emery

RESPONSIBLE PARTY NAME: Range Resources-Pine Mountain, Inc.

COUNTY: Clay DISTRICT: Henry

QUADRANGLE: Clay 7.5'

SURFACE OWNER: Heartwood Forestland Fund

ROYALTY OWNER: Nicholas County Coal Company

UTM GPS NORTHING: 4,252,341

UTM GPS EASTING: 499,990 GPS ELEVATION: 426 m (1399 ft)

The Responsible Party named above has chosen to submit GPS coordinates in lieu of preparing a new well location plat for a plugging permit or assigned API number on the above well. The Office of Oil and Gas will not accept GPS coordinates that do not meet the following requirements:

1. Datum: NAD 1983, Zone: 17 North, Coordinate Units: meters, Altitude: height above mean sea level (MSL) – meters.
2. Accuracy to Datum – 3.05 meters
3. Data Collection Method:
Survey grade GPS : Post Processed Differential
Real-Time Differential
Mapping Grade GPS : Post Processed Differential
Real-Time Differential
4. Letter size copy of the topography map showing the well location.

I the undersigned, hereby certify this data is correct to the best of my knowledge and belief and shows all the information required by law and the regulations issued and prescribed by the Office of Oil and Gas.

Ben R. Saylor
Signature

P.S. 2092
Title

6-21-2011
Date

Topo Quad: Swandale 7.5'

Scale: 1" = 2000'

County: Clay

Date: February 12, 2007

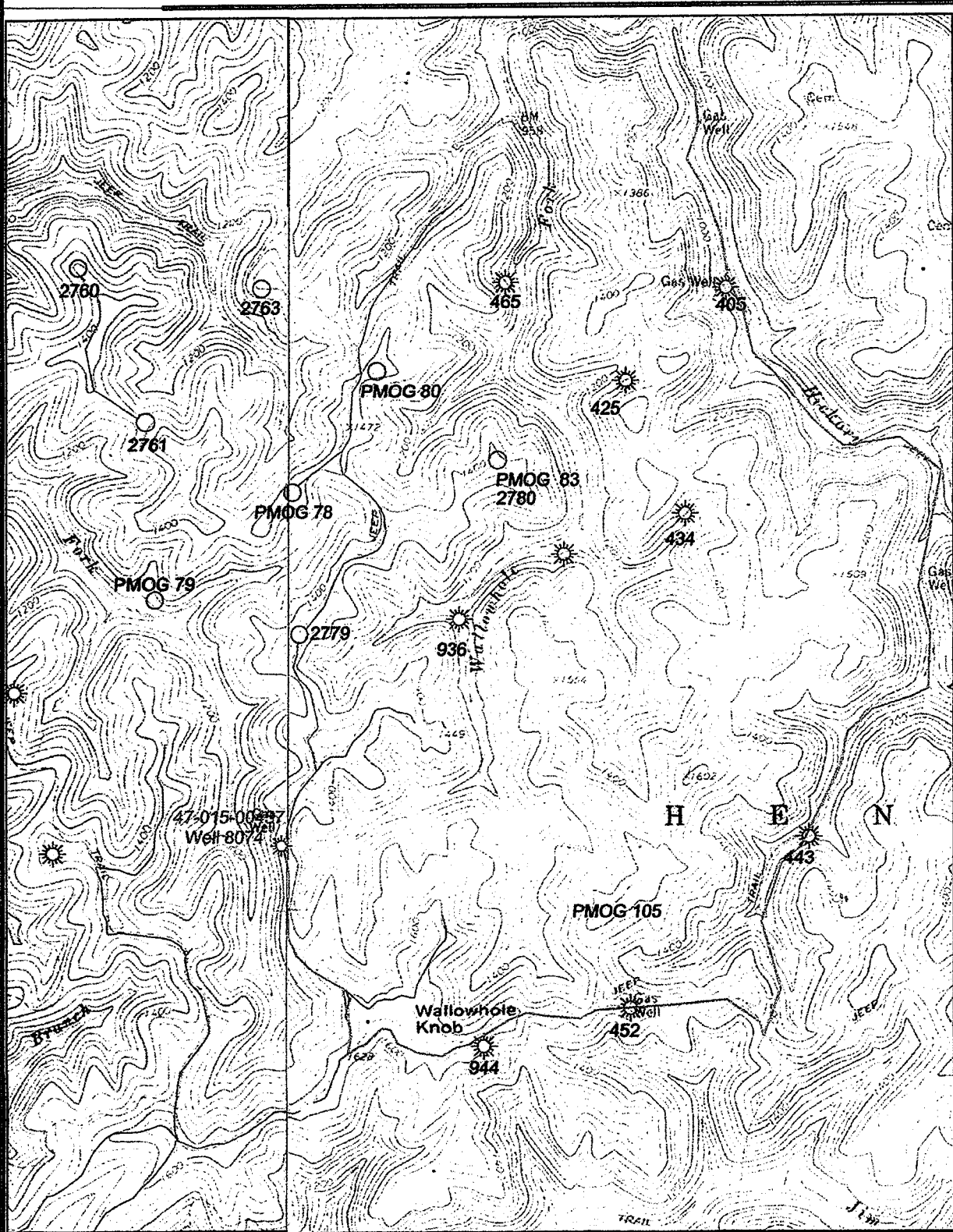
District: Henry

Project No: 02-04-B-07

WW-9

47-015-00457 Emery 8074

PG 7 OF 8



REPRODUCTION BY:
 RANGE RESOURCES-FINE MOUNTAIN, INC.
 P.O. Box 2105
 Abingdon, VA 24202

SURVEYING AND MAPPING SERVICES PERFORMED BY:

ALLEGHENY SURVEYS, INC.
 2-800-482-0608
 P.O. BOX 438
 BIRCH RIVER, WV 26604
 FAX: (304) 640-8505
 TEL: (304) 640-8505
 TEL: (304) 640-8505
 FAX: (304) 640-8505

