

1500390A

WW-7
8-30-06



West Virginia Department of Environmental Protection
Office of Oil and Gas
WELL LOCATION FORM: GPS

API: 47-015-00390 WELL NO.: ERC&L 7977

FARM NAME: Elk River Coal

RESPONSIBLE PARTY NAME: Range Resources – Pine Mountain, Inc.

COUNTY: Clay DISTRICT: Buffalo 1

QUADRANGLE: Clay 7.5' 629

SURFACE OWNER: P.H. Timber, LLC

ROYALTY OWNER: Range Resources – Pine Mountain, Inc.

UTM GPS NORTHING: 4259528

UTM GPS EASTING: 498747 GPS ELEVATION: 409 m (1342 ft)

The Responsible Party named above has chosen to submit GPS coordinates in lieu of preparing a new well location plat for a plugging permit or assigned API number on the above well. The Office of Oil and Gas will not accept GPS coordinates that do not meet the following requirements:

1. Datum: NAD 1983, Zone: 17 North, Coordinate Units: meters, Altitude height above mean sea level (MSL) – meters.
2. Accuracy to Datum – 3.05 meters
3. Data Collection Method:
Survey grade GPS : Post Processed Differential
Real-Time Differential
Mapping Grade GPS : Post Processed Differential
Real-Time Differential

Received
Office of Oil & Gas
OCT 31 2014

4. Letter size copy of the topography map showing the well location.

I the undersigned, hereby certify this data is correct to the best of my knowledge and belief and shows all the information required by law and the regulations issued and prescribed by the Office of Oil and Gas.

Signature

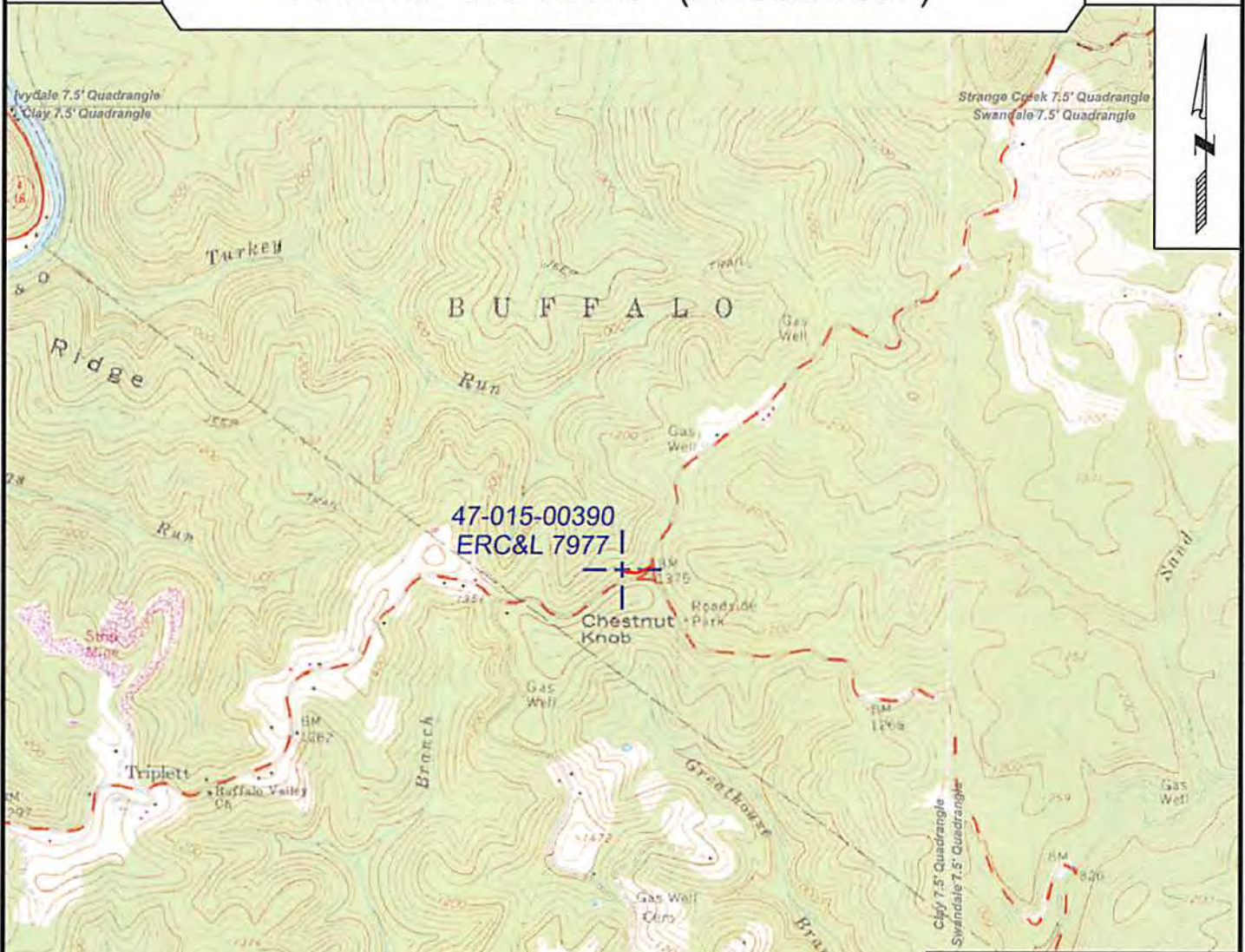
PS# 2180
Title

7/16/14
Date

Topo Quad: Clay 7.5' Scale: 1" = 2000'
 County: Clay Date: June 26, 2014
 District: Buffalo Project No: 170-04-B-14

API # 47-015-00390 (ERC&L 7977)

Topo



Received
 Office of Oil & Gas
 OCT 31 2014

NAD 27, WV South Zone

N: 540,366.11
 E: 1,995,838.10
 ELEV: 1,341.61

WGS 84
 LAT: 38.484089
 LONG: -81.014368



SURVEYING AND MAPPING SERVICES PERFORMED BY:
ALLEGHENY SURVEYS, INC.
 1-800-482-8606
 237 Birch River Road
 Birch River, WV 26610
 PH: (304) 649-8606
 FAX: (304) 649-8608

PREPARED FOR:
Range Resources - Pine Mountain, Inc.
 406 West Main Street
 Abingdon, VA 24210