

LATITUDE 38 3730

0 → 0625
75' 10C

0.10S
2.09W

80 5730

LONGITUDE

7'5 OGIS topo location

7.5' loc _____ 15' loc 2.98S
_____ (calc.) 4.34W

Company _____

Farm _____

Quad Strange Creek Gassaway WC

County _____

District Ottawa

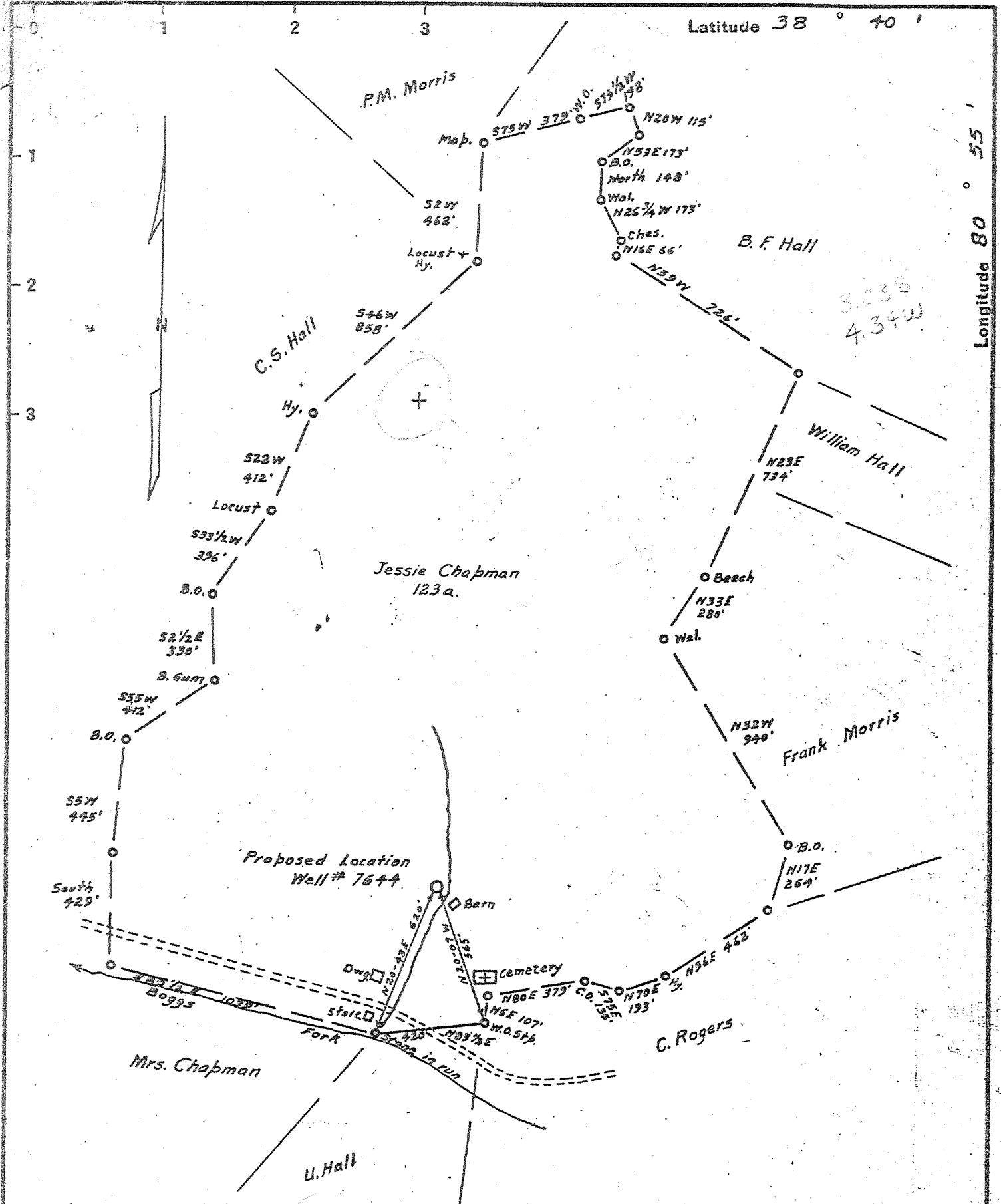
WELL LOCATION MAP

File No. Clay 122

DEEP WELL

3-3

(0)



New Location... **TO BE REDRILLED**
 Drill Deeper..... **3/1/61**
 Abandonment.....

LUCKY FOUR OIL COMPANY (E. R. Copper)
 232 - 7th AVE.
 SOUTH CHARLESTON, WEST VIRGINIA

Company PITTSBURGH & W.VA. GAS CO.
 Address 608 UNION BANK, CLARKSBURG, W.VA.
 Farm JESSIE CHAPMAN
 Tract _____ Acres 123 Lease No. 22059
 Well (Farm) No. 1 Serial No. 7644
 Elevation (Spirit Level) 988 L
 Quadrangle GASSAWAY S. W. 14 WC
 County CLAY District OTTER
 Engineer Jameal Jeffries
 Engineer's Registration No. _____
 File No. _____ Drawing No. _____
 Date 8-10-37 Scale 1" = 500'

STATE OF WEST VIRGINIA
 DEPARTMENT OF MINES
 OIL AND GAS DIVISION
 CHARLESTON

WELL LOCATION MAP
 FILE NO. CLAY-122

DRILL
 + Denotes location of well on United States Topographic Maps, scale 1 to 62,500, latitude and longitude lines being represented by border lines as shown.

= Denotes one inch spaces on border line of original tracing.

Deep Well

CLAY COUNTY WELL RECORDS.

Clay County Permit and Map Number.

Clay-No. Farm Name and Well No. _____ Company _____ District
 122 Chapman, Jessie, No. 1 (7644)-----Pgh. and W. Va.-----Otter

Jessie Chapman No. 1 (7644) Well.

Otter District, Clay County, W. Va.
 By Pittsburgh & W. Va. Gas Company.
 Permit No. Clay-122.

Elevation, 988' L.
 416 M. cu. ft. gas (3rd Salt Sand); R. P., 325 lbs.
 Located 3.08 mi. S. of 38° 40' and 4.52 mi. W. of 80° 55'—WC—Gassa-
 way Quadrangle.

On north side of Boggs Fork.
 1.8 mi. S. W. of Elmira; 2.3 mi. W. of Servia.

	Top.	Bottom.	Thickness.	Elevation (top)
Big Lime -----	1836	2020	184	— 848
Big Injun Sand-----	2020?	? ?		—1032
Berea Sand -----	2453	2457	4	—1465
Corniferous Lime ----	6122	6317	195	—5134.
Oriskany Sand -----	6317	6382	65	—5329

Thickness, Devonian Shales, 3665 feet. Total depth, 6451'.

Remarks: Completed May 1, 1938. Shot in Oriskany.

Hole full fresh water, 52'. Salt water, 1435'.

Gas, (3rd Salt Sand), 1622-26' (800 M.). Show oil, (Big Injun), 1980'.

Oil show, 2060-69' and 2075-80'. Gas, 2075-80' (500 M.), blew out.

Show gas, (Brown Shale), 5172-83'. Gas blowout at 6080'.

Show gas, (Oriskany), at 6326'. Complete set of samples.

Driller's log reports Big Injun at 1960-2020'.

On 123 acres.

WEST VIRGINIA DEPARTMENT OF MINES
OIL AND GAS DIVISION

WELL RECORD

Permit No. Clay -122

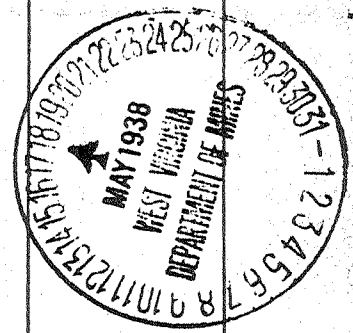
Oil or Gas Well Gas
(Kind)

Company Pittsburgh & West Va Gas Company.
Address Clarksburg, West Va.
Farm Jessie Chapman Acres 123
Location (waters) Gassaway N/W. 1-1
Well No. 7644 Elev. 988
District Otter County Clay
The surface of tract is owned in fee by Luther Chapman
Address Obrion, W.Va.
Mineral rights are owned by Raymond Nottingham
Address Duck, West Va.
Drilling commenced September 9th, 1937
Drilling completed May 1st, 1938
Date shot..... Depth of shot.....
Open Flow 30 /10ths Water in..... Inch
1-1/2" Merc. in..... Inch
Volume..... 416,000 Cu. Ft.
Block Pressure 325 lbs. 168 hrs.
Oil..... bbls., 1st 24 hrs.
Fresh water..... 52 feet..... feet
Salt water..... 1435 feet..... feet

Casing and Tubing	Used in Drilling	Left in Well	Packers
Size			
16.....	60	60	Kind of Packer.....
13.....	325	325	Size of.....
10.....	1822	1822	Depth set.....
8-5/8"	2648	852	Perf. top.....
7"	6142	842	Perf. bottom.....
5 3/16.....			Perf. top.....
3.....			Perf. bottom.....
2.....			
Liners Used.....			

CASING CEMENTED..... SIZE..... No. FT..... Date.....
COAL WAS ENCOUNTERED AT..... FEET..... INCHES
..... FEET..... INCHES..... FEET..... INCHES
..... FEET..... INCHES..... FEET..... INCHES

Formation	Color	Hard or Soft	Top	Bottom	Oil Gas or Water	Depth Found	Remarks
and gravel	Gray	Open	0	10			
and gravel	River	"	10	15			
and gravel	Blue	"	15	48			
rock	Red	Gumbo Red	48	52	Water	52'	Hole full.
lime	Gray	Medium	52	65			
rock	Red	"	65	95			
lime	Grey	Hard	95	110			
and	Light	Close	110	130			
red Rock	Red	Soft	130	140			
late	Grey	"	140	175			
red Rock	Soft	Gumbo	175	200			
lime	Grey	Medium	200	210			
red Rock	Red	Soft	210	250			
shale	Blue	Hard	250	275			
red Rock	Gumbo	Soft	275	280			
shale	Blue	Medium	280	330			
lime	Grey	Hard	330	375			
and	Grey	Close	375	440			
late Break	"	Soft	440	445			
and	"	Hard	445	475			
late	"	Soft	475	485			
late&Shell	"	Hard&Soft	485	520			
and	"	Medium	520	585			
late	"	Soft	585	590			
and	"	Hard	590	602			
late break	Dark	Soft	602	610			
and shell	Dark	Hard	610	615			
late&Shell	"	Soft&Hard	615	693			
late	"	Soft	693	698			
lime	Grey	Hard	698	705			
and	"	"	705	725			
shale	Black	Soft	725	728			
late	"	"	728	735			
late&Shell	Dark	Soft&Hard	735	798			
and	Grey	Hard	798	890			
late&Shell	"	Hard&Soft	890	920			
and	"	Hard	920	970			
late	Black	Soft	970	1015			
and	Grey	Hard	1015	1042			
and	Black	"	1042	1094			
late&Shells	"	Medium	1094	1115			
grey Sand	Grey	Hard	1115	1135			



Formation	Color	Hard or Soft	Top	Bottom	Oil, Gas or Water	Depth Found	Remarks
Slate	Dark	Medium	1135	1155			
Sand	Grey	Hard	1155	1205			
Slate	Black	Medium	1205	1252			
Sand	Grey	Hard	1252	1265			
Slate	Black	Medium	1265	1335			
Sandy Shale	Dark	Hard	1335	1372			
Slate	Dark-Grey	Medium	1372	1398			
Salt Sand	Grey	Hard	1398	1445	Water	1435'	2 Bailleurs per hour. No water below 1435'
Shale	Black	Medium	1445	1518			
2nd. Salt Sand	Grey	Hard	1518	1565			
Sandy Shale	Dark	Hard	1565	1580			
Slate	"	Medium	1580	1620			
3rd. Salt Sand	Grey	Hard	1620	1668	Gas	1622-26'	S.L. Meas. 28 Hrs. after drilling - 800 M
Sandy Shale	Dark	"	1668	1680			
Slate	Grey	Medium	1680	1690			
Sandy Shale	Grey	Hard	1690	1710			
Sand	"	"	1710	1720			
Red Rock	Red	Medium	1720	1723			
Lime	Black	Hard	1723	1735			
Slate	"	Soft	1735	1737			
Sand	Grey	Hard	1737	1745			
Slate&Shells	Dark	Medium	1745	1767			
Lime	"	Hard	1767	1807			
Pencil Cave	"	Soft	1807	1810			
Big Lime	White	Hard&Sandy	1810	1960			S.L. 1822'
Big Injun	Dark	Hard	1960	2020	Sh. Oil	1980'	
Shale&Shells	"	Medium	2020	2625	Oil	2060-69'	1/2 Bbl. per hour.
Pink Rock	Pink	Soft	2625	2632	Oil	2075-80'	Filled up
Slate&Shell	Dark	Medium	2632	2648	Gas	2075-80'	150' in one hour. Gas 500 M. Estimated. blew out 1 S.L. 2069'
Slate&Shell	Dark Grey	"	2648	4560			S.L. 3828'
Brown Shale	Brown	Soft	4560	4570			S.L. 4838'
Gray Shale	Gray	"	4570	4690			S.L. 5870'
Slate&Shells	"	Medium	4690	4766			S.L. 6142'
Brown Shale	Brown	Soft	4766	4808	Show Gas	5172-83'	Had gas blow out at 6080'
Slate&Shells	Gray	Medium	4808	5419			
Brown Shale	Brown	Soft	5419	5551			
Slate Shells	Grey	"	5551	5700			
Shale	Brown	"	5700	5940			
Slate	Grey	"	5940	6020			
Slate	Black	"	6020	6109	Gas	6080	
Ironiferous	Gray	Hard	6109	6319			
Lime							
Shale (Break)	Gray	Hard	6282	6307			
Criskany	White	"	6319	6357	Sh. Gas	6326'	Gas would burn about 2' out of casing while bailer was hauling.
Lime	Gray	Hard&Shells	6357	6451			
Total Depth				6451			

Date May 17th, 1938

APPROVED PITTSBURGH & WEST VA GAS CO. Owner

By

J. E. B. Bledsoe
(Title)

WEST VIRGINIA DEPARTMENT OF MINES

OIL & GAS DIVISION

WELL RECORD

Permit No. Clay-122

GAS WELL

Gassaway N.W. Quad

CASING & TUBING

Company	Pittsburgh & W. Va. Gas Co.	16	60	60
Address	Clarksburg, W. Va.	13	325	325
Farm	Jessie Chapman Acres 123	10	1822	1822
Location	Gassaway N/W. 1-1	8-5/8	2648	352
Well No.	7644 Elev. 988	7	6142	842
District	Otter County Clay			
Surface	Luther Chapman, Obrion, W. Va.			
Mineral	Raymond Nottingham, Duck, W. Va.			
Drilling Commenced	September 9, 1937			
Drilling Completed	May 1, 1938			
Open Flow	30/10ths Merc. in 1-1/2" F.M.			
Volume	416,000 c.f.			
Rock Pressure	325 lbs. 168 hrs.			
Fresh water	52' Salt Water 1435'			

Formation Color ^{HTY} S TOP Base Result Formation Color ^{HTY} S TOP Base Result

Sand	Gray	Open	0	10	3rd Salt Sd.	Gray	H	1620	1668
Gravel	River	"	10	15	Sandy Shale	Dark	H	1668	1680
Sand	Blue	"	15	48	Slate	Grey	Med	1680	1690
Rock	Red Gumbo	"	48	52	Sandy Shale	"	H	1690	1710
Lime	Gray	Med.	52	65	Sand	"	H	1720	1720
Rock	Red	"	65	95	Red Rock	Red	Med	1720	1723
Lime	Gray	H	95	110	Lime	Black	H	1723	1735
Sand	Light	Close	110	130	Slate	"	S	1735	1737
Red Rock	Red	S	130	140	Sand	Grey	H	1737	1745
Slate	Gray	S	140	175	Slate&Shells	Dark	Med.	1745	1767
Red Rock	Gumbo	S	175	200	Lime	"	H	1767	1807
Lime	Grey	Med.	200	210	Pencil Cave	"	S	1807	1810
Red Rock	Red	S	210	250	Big Lime	White	H-S	1810	1960
Shale	Blue	H	250	275	Pig Injun	Dark	H	1960	2020
Red Rock	Bumbo	S	275	280	Shale & Shells	"	Med.	2020	2625
Shale	Blue	Med.	280	330	Pink Rock	Pink	S	2625	2632
Lime	Grey	H	330	375	Slate&Shells	Dark	Med.	2632	2648
Sand	Grey	Close	375	440	Slate&Shell	Dk.-Gr.	"	2648	4560
Slate Break	Grey	S	440	445	Brown Shale	Brown	S	4560	4570
Sand	"	H	445	475	Gray Shale	Gray	"	4570	4690
Slate	"	S	475	485	Slate&Shells	"	Med.	4690	4766
Slate & Shell	"	H-S	485	520	Brown Shale	Brown	S	4766	4808
Sand	"	Med.	520	585	Slate&Shells	Gray	Med.	4808	5419
Slate	"	S	585	590	Brown Shale	Brown	S	5419	5551
Sand	"	H	590	602	Slate Shells	Grey	"	5551	5700
Slate Break	Dark	S	602	610	Shale	Brown	"	5700	5940
Sand Shell	"	H	610	615	Slate	Grey	"	5940	6020
Slate&Shell	"	S-H	615	693	Slate	Black	"	6020	6109
Slate	"	S	693	698	Corniferous	Gray	H	6109	6319
Lime	Grey	H	698	705	Lime Shale	"	H	6282	6307
Sand	"	H	705	725	(Break)	"	H	6319	6357
Shale	Black	S	725	728	Oriskany	White	"	6357	6451
Slate	"	S	728	735	Line - ^{HTY} 6326	Gray	H-S	6357	6451
Slate&Shell	Dark	S-H	735	798	Total Depth				6451
Sand	Grey	H	798	890					
Slate&Shell	"	H-S	890	920	Water 52' -	Hole full			
Sand	"	H	920	970	Water 1435'	2 bailers per hour			No water
Slate	Black	S	970	1015		below 1435'			
Sand	Grey	H	1015	1042	Gas 1622-26'	S.L.Meas. 28 hrs. after drill-			
Sand	Black	H	1042	1094		ling - 800 MCF			
Slate&Shells	"	Med.	1094	1115	S.L. 1822'				
Grey Sand	Grey	H	1115	1135	Sh. oil 1980'				
Slate	Dark	Med.	1135	1155	Oil 2060-69'	1/2 bbl. per hour. Filled up			
Sand	Grey	H	1155	1205	Oil 2075-80'	150' in 1 hr.			
Slate	Black	Med.	1205	1252	Gas 2075-80'	Gas 500 MCF estimated			
Sand	Grey	H	1252	1265		blew out 1 hr.			
Slate	Black	Med.	1265	1355	Show gas 5172-83'	S.L. 2069'			
Sandy Shale	Dark	H	1355	1372		S.L. 3828'			
Slate Dark	Grey	Med.	1372	1398		S.L. 4838'			
Salt Sand	Grey	H	1398	1445		S.L. 5870'			
Shale	Black	Med.	1445	1518		S.L. 6142'			
2nd Salt Sd.	Grey	H	1518	1565	Gas 6080	Had gas blow out at 6080'			
Sandy Shale	Dark	H	1565	1580	Sh. Gas 6326'	Gas would burn about 2' out			
Slate	"	Med.	1580	1620		of casing while bailer was hauling.			

1960
988
972
13
2952-2497?
105
6109
988
-5121
6319
988
533
635
988
536

485

Robert W. Putta

Ca-122

Well No. #644, Jessie Chapman farm.
Otter District, Clay County, West Va.

Shot Record.

Shot with 30 quarts	from 6319-6331'	(Gas 6326')
" " 90 "	" " 6307-6331'	(Gas 6326')
" " 600# Detonite	from 5118-5178'	(Gas 5172-5183')
" " 90 quarts	from 1620-1627'	(Gas 1622-27')

The shot at 1629-27' shot the 10" casing off so that the Salt Sand gas which was cemented back of the 10" casing could come up through the 10" casing.

Cement Record of casing.

10" Casing	cemented from 1822 to 300'
8-5/8" "	" " 2648 to 2020'
7" "	" " 6142 to 5492'

Casing record

16" Casing	-----	60'	Left in well.	60'
13" "	-----	325'	" " "	325'
10 7/8" "	-----	1822'	" " "	1822'
8-5/8" "	-----	2648'	" " "	852' (Shot 1596')
7" "	-----	6142'	" " "	842' (Shot 5420')
5-5/16" "	-----	1629'		

*Ground level
16-20-42*