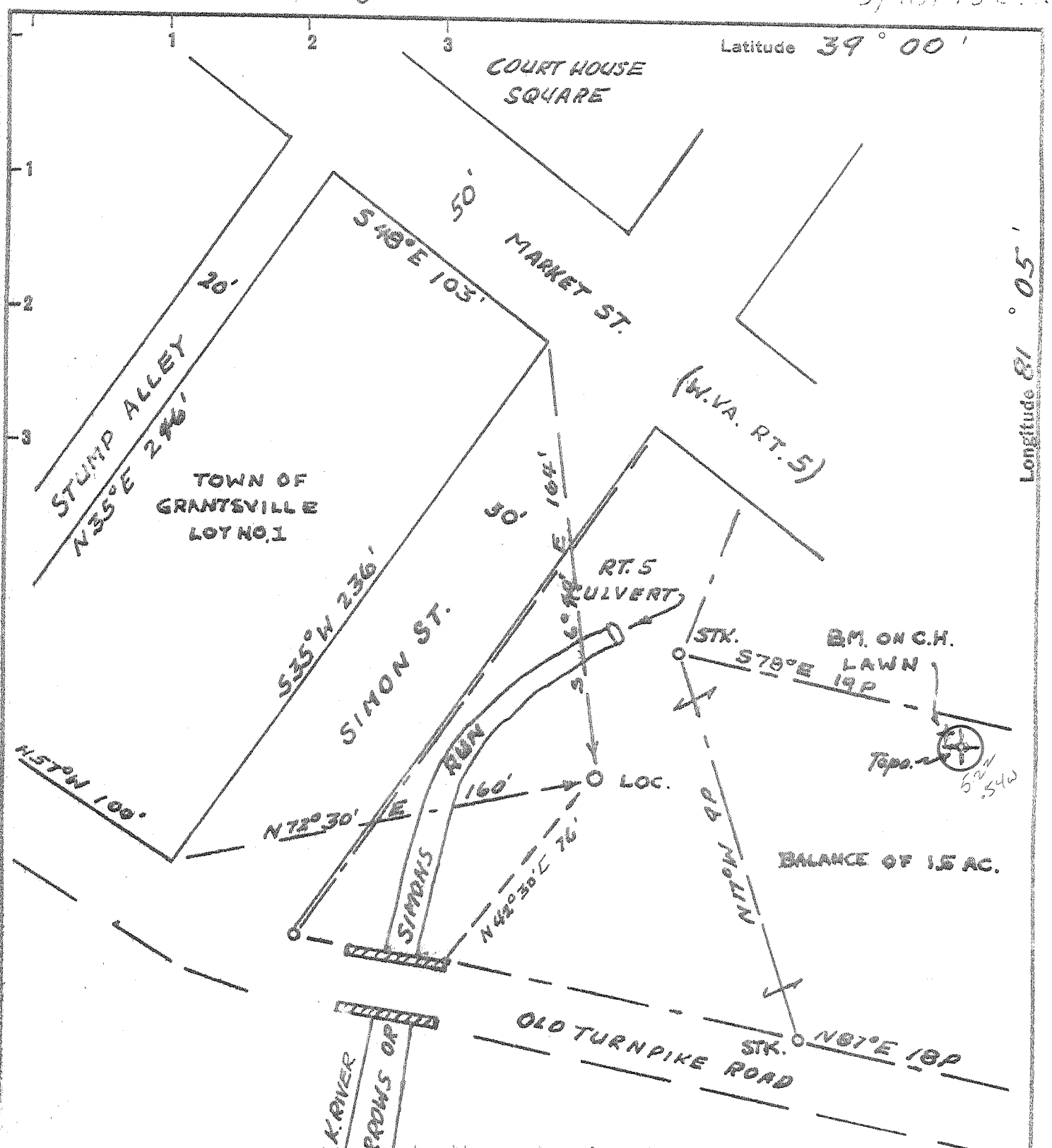


5/16/73



I, the undersigned, hereby certify that this is a true and correct copy of the original survey and location of the well as shown on the accompanying map, and that the location of the well is as shown on the map of the same.

Donald W. Morris

New Location
 Drill Deeper
 Abandonment -11-20-73

Company	Carl Morris
Address	P.O. Box 238, Grantsville, W.Va. 26147
Farm	Edward G. Cain
Tract	Acres 1.5 Lesse No.
Well (Farm) No.	1 Serial No.
Elevation (Spirit Level)	686.3
Quadrangle	Arnoldsburg NC
County	Calhoun District Center
Engineer	Ronald W. Morris
Engineer's Registration No.	1653
File No.	Drawing No.
Date	May 14, 1973 Scale 1" equals 50'

STATE OF WEST VIRGINIA
 DEPARTMENT OF MINES
 OIL AND GAS DIVISION
 CHARLESTON

WELL LOCATION MAP

FILE NO. CAL-406-A

+ Denotes location of well on United States Topographic Maps, scale 1 to 62,500, latitude and longitude lines being represented by border lines as shown.

- Denotes one inch spaces on border line of original tracing.

47-013