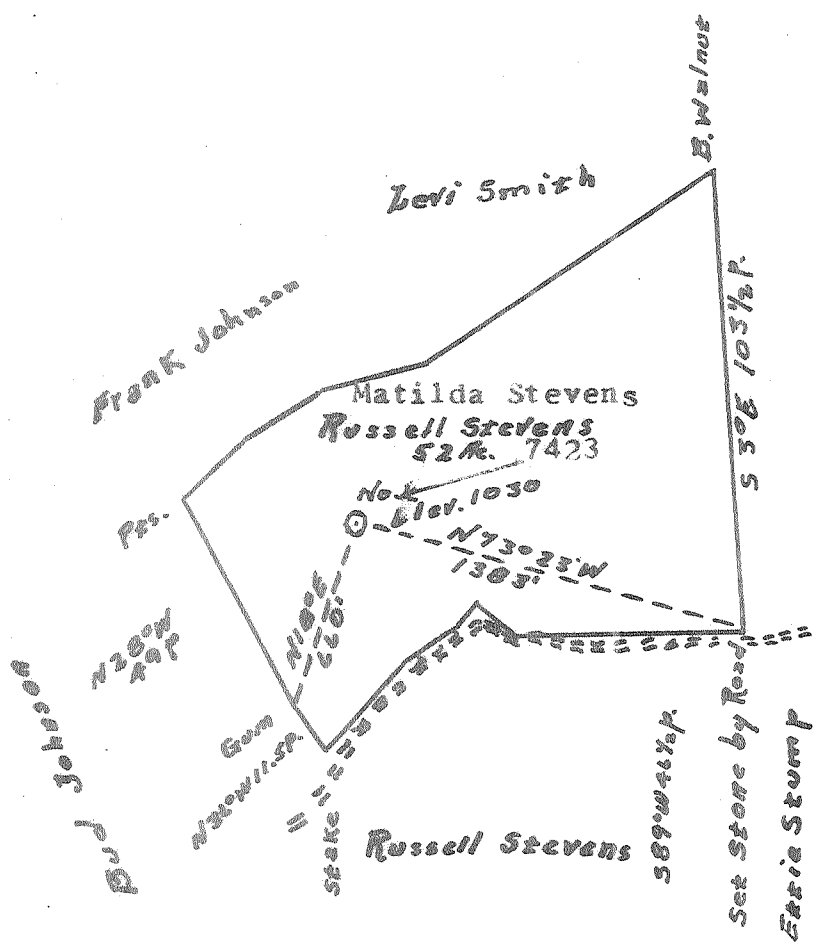


LATITUDE 39° 00'

LONGITUDE 81° 05'



I, the undersigned, hereby certify that this map is correct to the best of my knowledge and belief and shows all the information required by paragraph 6 of the rules and regulations of the oil and gas section of the mining laws of West Virginia.

New Location.....  
 Drill Deeper.....  
 Abandonment.....

MINIMUM ERROR OF CLOSURE 1' IN 200'.

Company	Divers and Beecher
Address	Grantsville, W. Va.
Farm	Matilda Stevens
Tract	Acres 52 Lease No.
Well (Farm) No.	7423 Serial No.
Elevation (Spirit Level)	1030'
Quadrangle	Arnoldsburg - NC
County	Calhoun District Center
Engineer	Figure M <sup>rs</sup> Barakat
Engineer's Registration No.	610
File No.	Drawing No.
Date	11-9-66 Scale 1" = 40 rods

STATE OF WEST VIRGINIA  
 DEPARTMENT OF MINES  
 OIL AND GAS DIVISION  
 CHARLESTON

WELL LOCATION MAP  
 FILE NO. Calhoun - 388-A

+ Denotes location of well on United States Topographic Maps, scale 1 to 62,500, latitude and longitude lines being represented by border lines as shown.  
 - Denotes one inch spaces on border line of original tracing.