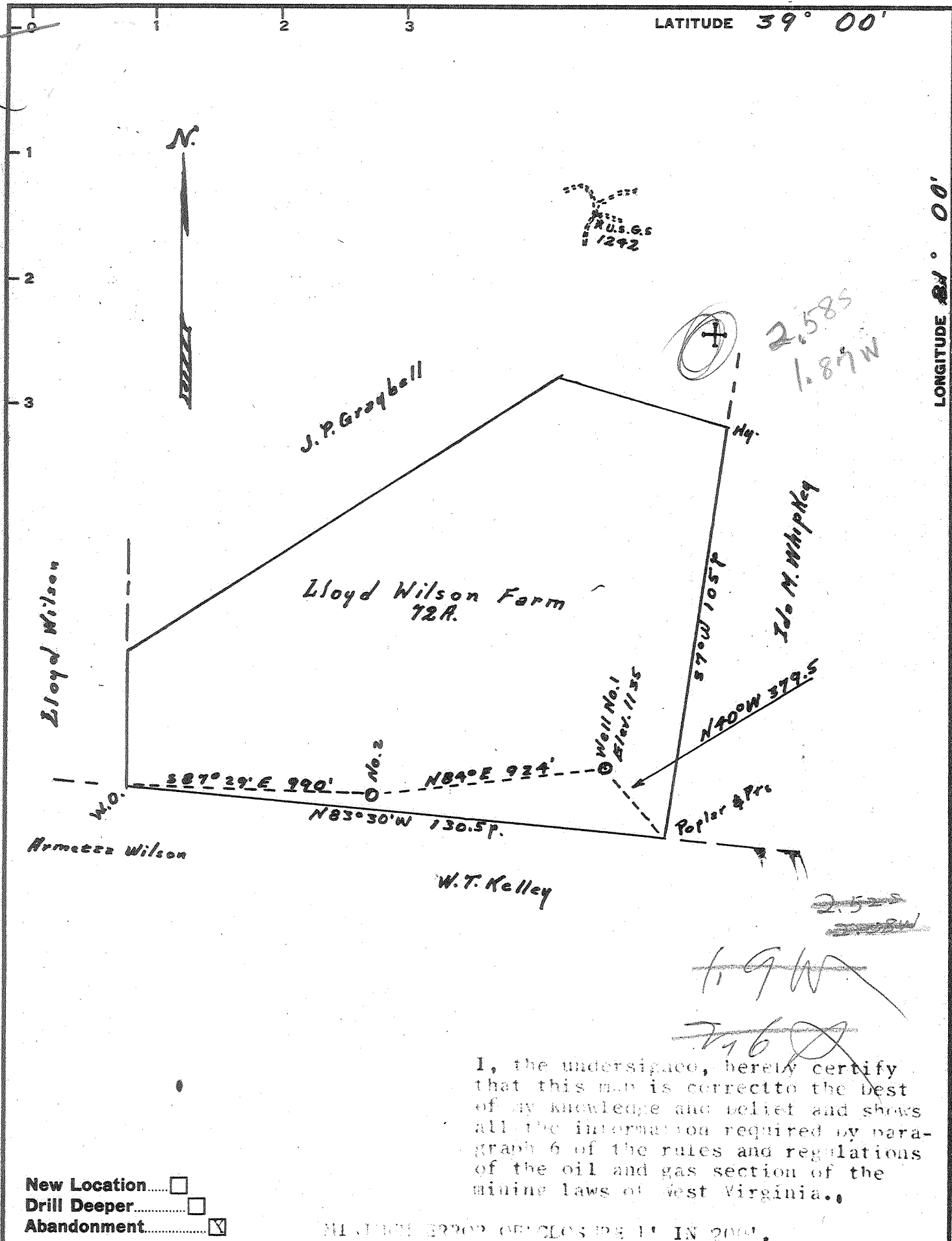


LATITUDE 39° 00'

LONGITUDE 81° 00'



I, the undersigned, hereby certify that this map is correct to the best of my knowledge and belief and shows all the information required by paragraph 6 of the rules and regulations of the oil and gas section of the mining laws of West Virginia.

New Location.....
 Drill Deeper.....
 Abandonment.....

NEEDS ERROR OF CLOSE BY IN 2001.

Company	Francis Cain
Address	Big Bend, W. Va.
Farm	Lloyd Wilson
Tract	Acres 72 Lease No.
Well (Farm) No.	Serial No.
Elevation (Spirit Level)	1135
Quadrangle	Arnoldsburg
County	Calhoun District Sherman
Engineer	Edgar 7776
Engineer's Registration No.	610
File No.	Drawing No.
Date	July 2, 1964 Scale 1" = 40 Rods

SEP 19 1964

STATE OF WEST VIRGINIA
 DEPARTMENT OF MINES
 OIL AND GAS DIVISION
 CHARLESTON

WELL LOCATION MAP
 FILE NO. CAL-378-A

+ Denotes location of well on United States Topographic Maps, scale 1 to 62,500, latitude and longitude lines being represented by border lines as shown.

- Denotes one inch spaces on border line of original tracing.

K&E IMPERIAL™ 71657 TRACING CLOTH

LLOYD WILSON NO-1 - FRANCIS CAIN - CAL-378-A