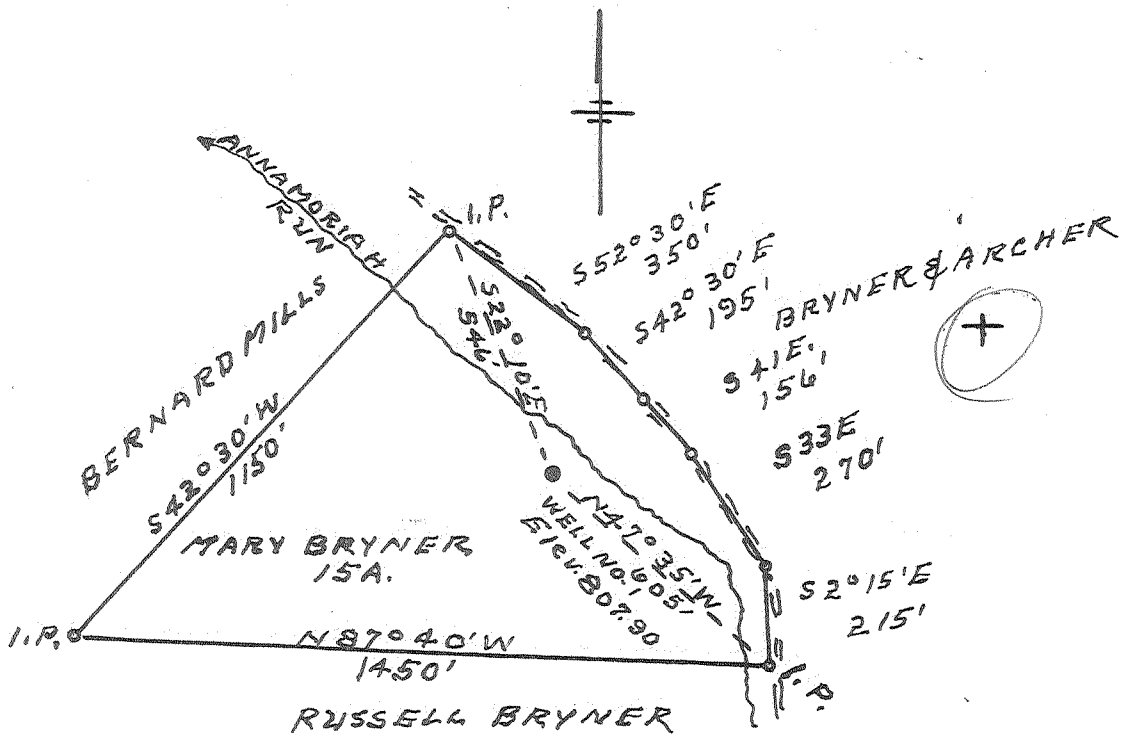


GA

Latitude 39° 00'

Longitude 81° 19'



New Location
 Drill Deeper
 Abandonment

NOV 13 1961

1.4 W
 5.5 D

Company WILLARD G. DRAKE
 Address SPENCER, W. VA.
 Farm MARY BRYNER
 Tract _____ Acres 15 Lease No. _____
 Well (Farm) No. 1 Serial No. _____
 Elevation (Spirit Level) 807.90
 Quadrangle ARNOLDSBURG
 County CALHOUN District SHERIDAN
 Engineer L. F. Dye
 Engineer's Registration No. 804
 File No. _____ Drawing No. _____
 Date 10-13-61 Scale 1" = 400'

STATE OF WEST VIRGINIA
 DEPARTMENT OF MINES
 OIL AND GAS DIVISION
 CHARLESTON

WELL LOCATION MAP
 FILE NO. CAL-377-A

+ Denotes location of well on United States Topographic Maps, scale 1 to 62,500, latitude and longitude lines being represented by border lines as shown.
 - Denotes one inch spaces on border line of original tracing.

MARY BRYNER No. 1 - WILLARD G. DRAKE - CAL-377A