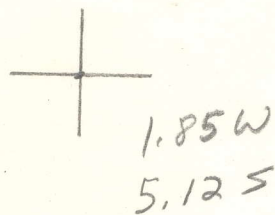


LATITUDE 39° 00'

LONGITUDE 101° 18'



7.5 OGIS topo location

7.5' loc _____ 15' loc _____
 _____ (calc.) _____

Company _____

Farm _____

Quad Arnoldsburg (NW)

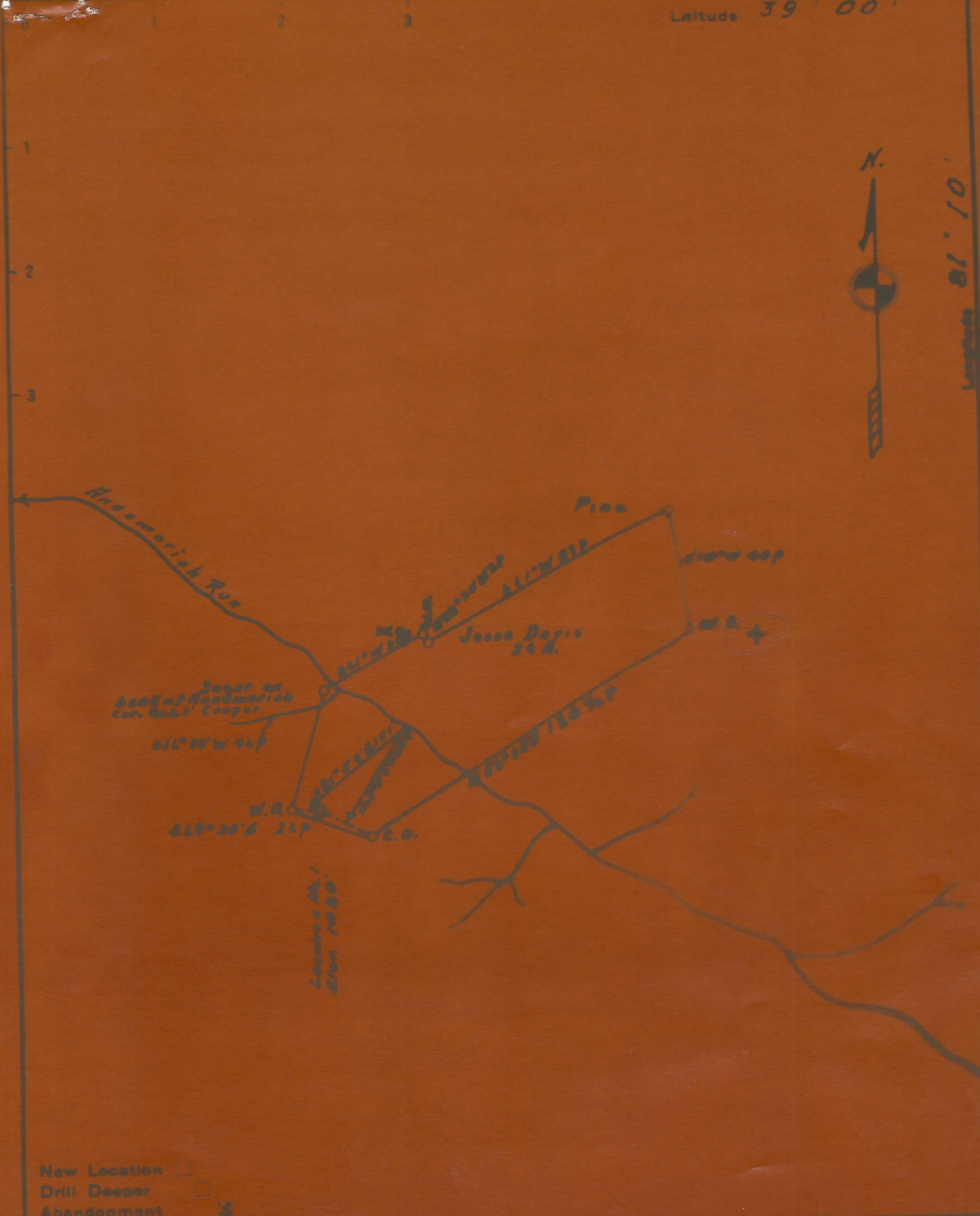
County Calhoun

District Sheridan

WELL LOCATION MAP

File No. 013-376A

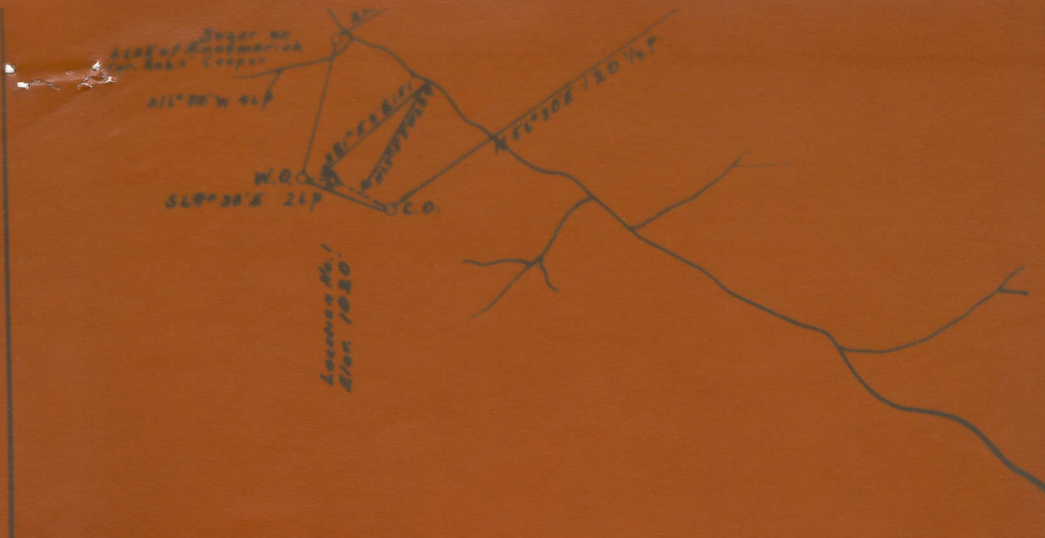
Latitude 39° 00'



New Location
 Drill Deeper
 Abandonment

Company Marshall & Austin
 Address Hammerhead, W. Va.
Jesse Davis

STATE OF WEST VIRGINIA
 DEPARTMENT OF OILS
 OIL AND GAS DIVISION
 CHARLESTON



New Location
 Drill Desser
 Abandonment

Company Marshall & Austin
 Address Roanoke, W. Va.
 Farm Jesse Davis
 Tract Acres 24 Lease No. _____
 Well (Farm) No. 1 Serial No. _____
 Elevation (Bench Level) 1020
 Geologic Arnoldsburg
 Geog. Salmon Domin Sheridan
 Engineer Geo. F. Hall
 Engineer's Registration No. _____
 File No. _____ Drawing No. _____
 Date 1/1/19 Scale 1" = 400'

STATE OF WEST VIRGINIA
 DEPARTMENT OF MINES
 OIL AND GAS DIVISION
 CHARLESTON

WELL LOCATION MAP
 FILE NO. CAL-576-A

+ Denotes location of well on United States Topographic Maps, scale 1 to 62,500, latitude and longitude lines being represented by border lines as shown.
 - Denotes one inch spaces on border line of original tracing.