

LATITUDE 38°50'

0.42W  
1.825

LONGITUDE 81°05'

7'5 OGIS topo location

7.5' loc \_\_\_\_\_ 15' loc \_\_\_\_\_  
(calc.) \_\_\_\_\_

Company \_\_\_\_\_

Farm \_\_\_\_\_

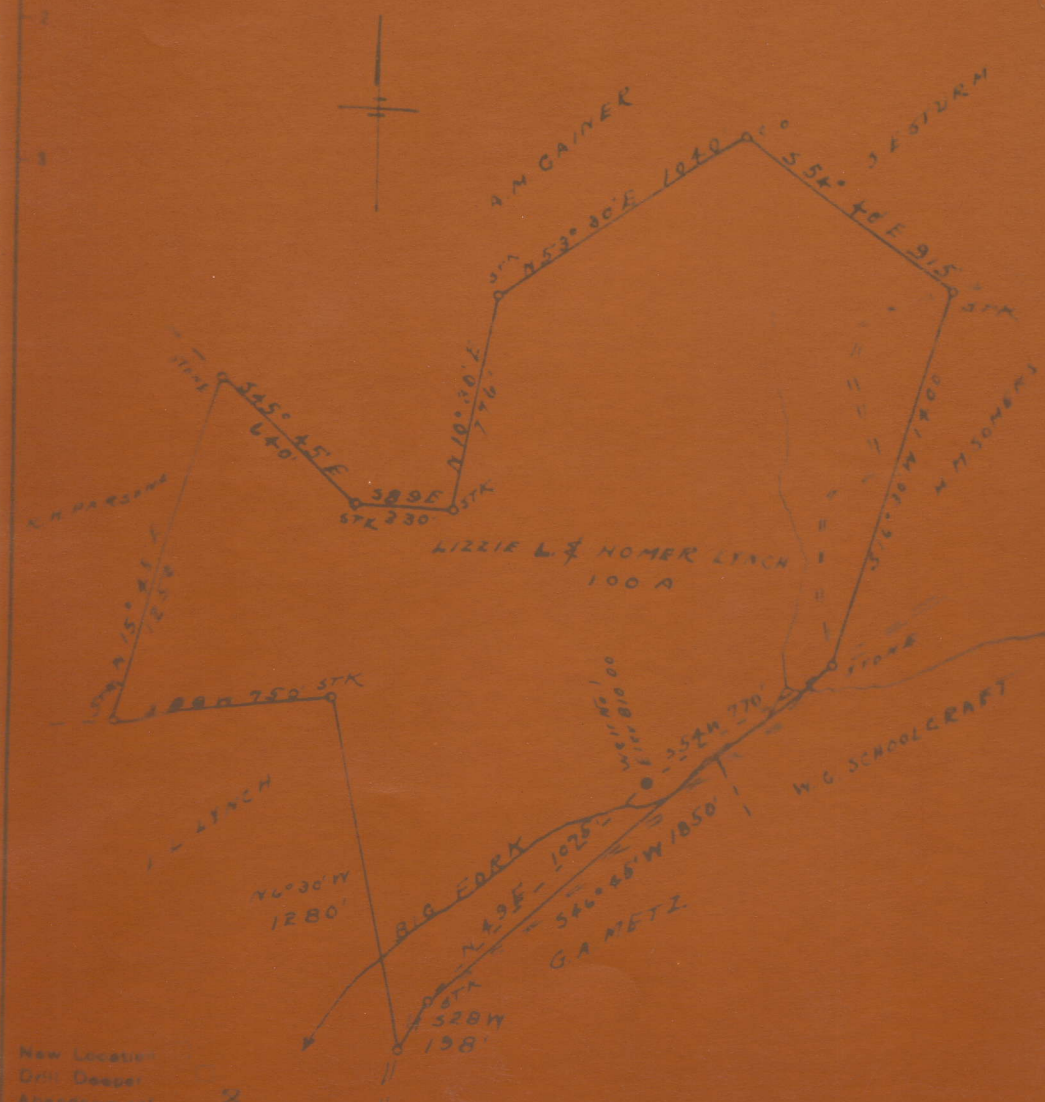
Quad Arnoldsburg (SC)

County Calhoun

District Lee

WELL LOCATION MAP

File No. 013-301A



Comd. WILLIAM CASSADY  
AGENCY SPENCER, W.VA.  
LIZZIE & HOMER LYNCH

STATE OF WEST VIRGINIA  
DEPARTMENT OF MINES  
OIL AND GAS DIVISION  
CHARLESTON

LYNCH, LIZZIE L. & HOMER, NO. 1.

Cal-301-A.

By William Cassady.

Lee Dist.

NO LOCATION

NO PLAT

Gainer  
+

15'  
38° 50'  
81° 05'