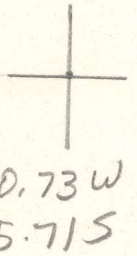


LATITUDE 39° 05'

LONGITUDE 81° 18'



T5 OGIS topo location

7.5' loc _____ 15' loc _____
 _____ (calc.) _____

Company _____

Farm _____

Quad Harrisville (SW)

County Calhoun

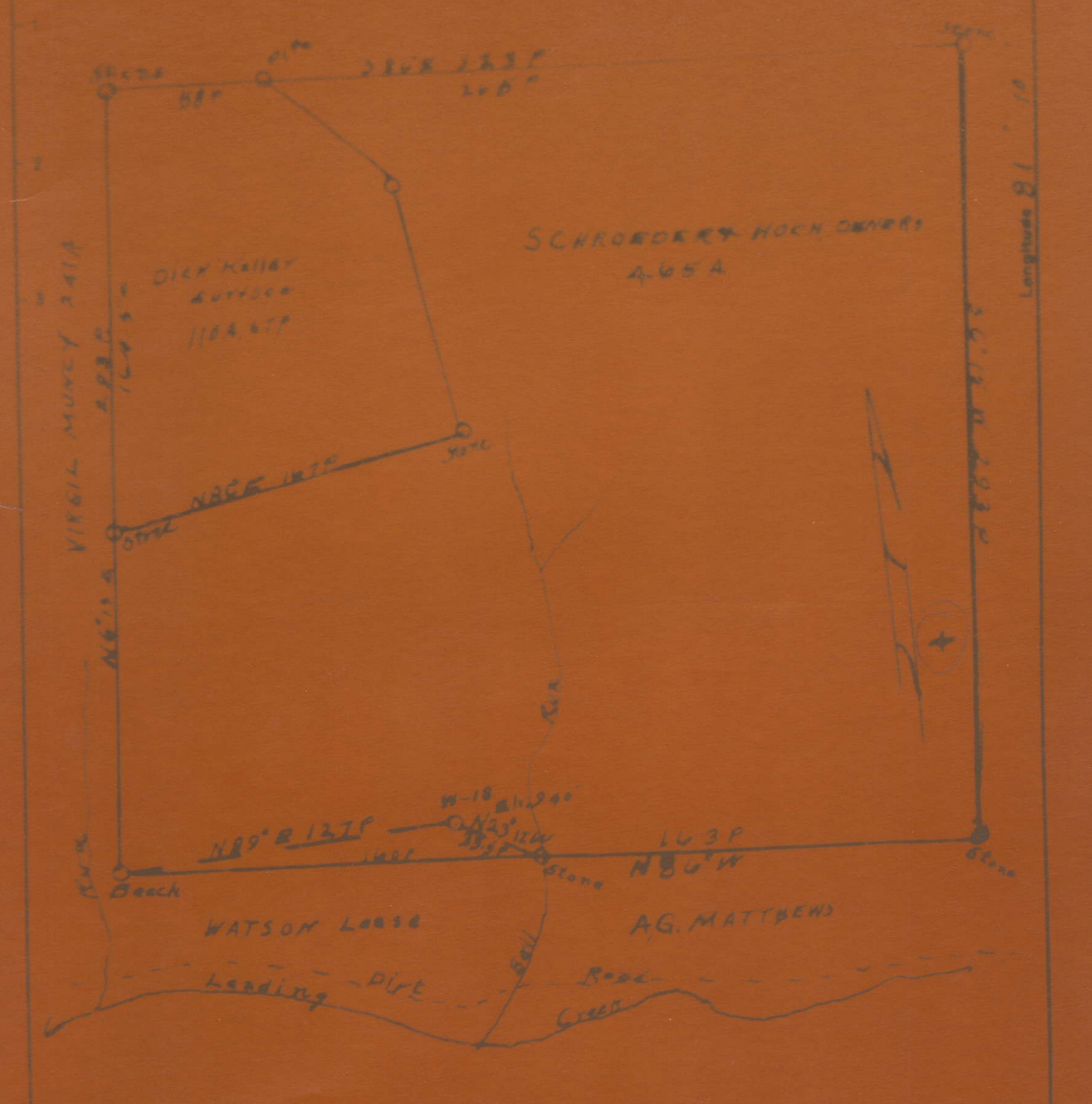
District Sheldon

WELL LOCATION MAP

File No. 013 - 2984

Latitude 37 00
39 00

G.A. MURPHY



New Location
 Drill Deeper
 Abandonment

Company Schroeder & Hoch Oil & Gas Properties
 Address 514 23rd St. Parkersburg W. Va.
 Farm Schroeder & Hoch
 Tract Acres 4.2 Lease No. _____

STATE OF WEST VIRGINIA
 DEPARTMENT OF MINES
 OIL AND GAS DIVISION
 CHARLESTON

BAKER & BAUGHMAN NO. 18.

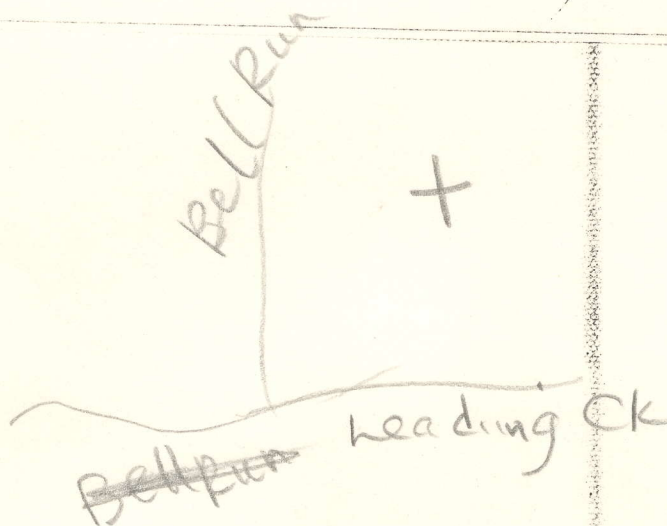
Cal-298-A.

By Schroeder & Hoch Oil & Gas Properties.

Sheridan Dist.

NO FLAT

No plat on micro location



*390051
810101*