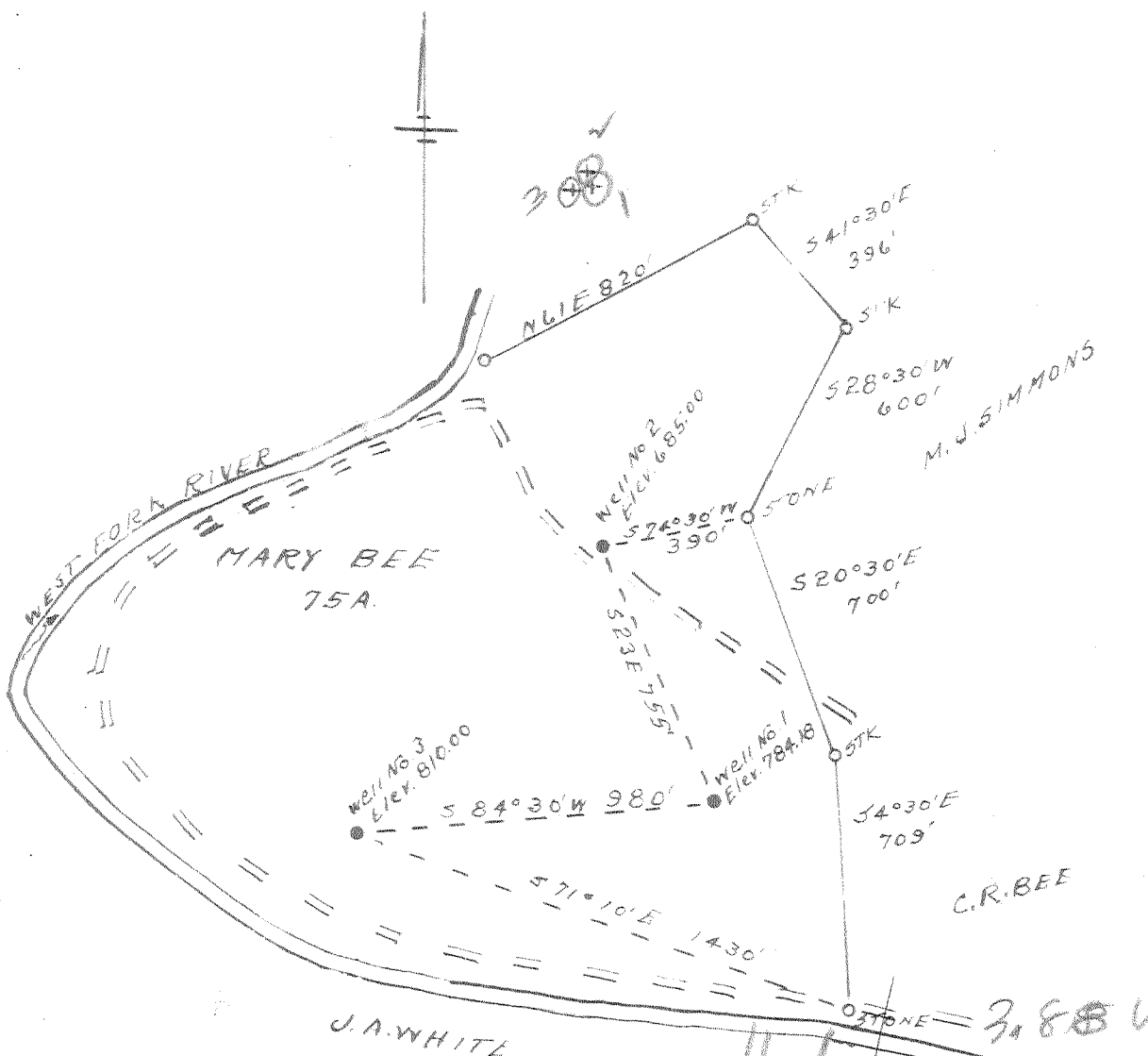


Latitude $38^{\circ} 55'$
 Longitude $81^{\circ} 10'$



New Location
 Drill Deeper
 Abandonment

FEB 11 1952

#1 3.88 W
 #2 3.9 W
 #3 4.0 W

Company OKMULGEE SUPPLY CORP.
 Address OKMULGEE, OKLA.
 Farm MARY BEE
 Tract _____ Acres 75 Lease No. _____
 Well (Farm) No. 1-2-3 Serial No. VC
 Elevation (Spirit Level) 41-784.18-42-685.00-43-810.00
 Quadrangle ARNOLDSBURG
 County CALHOUN District LEE
 Engineer D. F. Faye
 Engineer's Registration No. 804
 File No. _____ Drawing No. _____
 Date 9-16-48 Scale 1" = 500'

STATE OF WEST VIRGINIA
 DEPARTMENT OF MINES
 OIL AND GAS DIVISION
 CHARLESTON

WELL LOCATION MAP
 CAL-279-A-#1
 FILE NO. CAL-280-A-#2
 CAL-281-A-#3

+ Denotes location of well on United States Topographic Maps, scale 1 to 62,500, latitude and longitude lines being represented by border lines as shown.
 - Denotes one inch spaces on border line of original tracing.

MARY BEE TRACT NOS. 1-2-3 - OKMULGEE SUPPLY Co. (WESTON-SPENCER GRP) CAL-279-80-81-A

MARY BEE NO. 2 WELL.

280A

Lee District, Calhoun County, W. Va.

By Weston-Spencer Corporation, %Max Weiner, Daniel Boone Hotel,
Charleston, W. Va.

Abandoned under permit Cal-280-A; Arnoldsburg Quadrangle.

On 75 acres, on West Fork River.

Elevation, 685' L.

Drilling completed in 1908.

Shot Nov. 14, 1908, with 20 qts.; shot Oct. 27, 1914, with 50 qts.

No record of top or bottom depth of either shot.

6 $\frac{3}{8}$ " casing, 1694'; 5 $\frac{3}{16}$ " tubing, 1844'; 2" tubing, 2235'.

Oil well. Record to Dept. of Mines stamped Feb. 23, 1951.

Record to RCT from Lineberg Feb. 11, 1952. Old File No. 440.

	Top.	Bottom.
Big Lime	1794	- 1799
Big Injun Sand	1799	- 1846
Berea Sand (oil, 2216-2224')	2202	- 2244
Total depth		2245