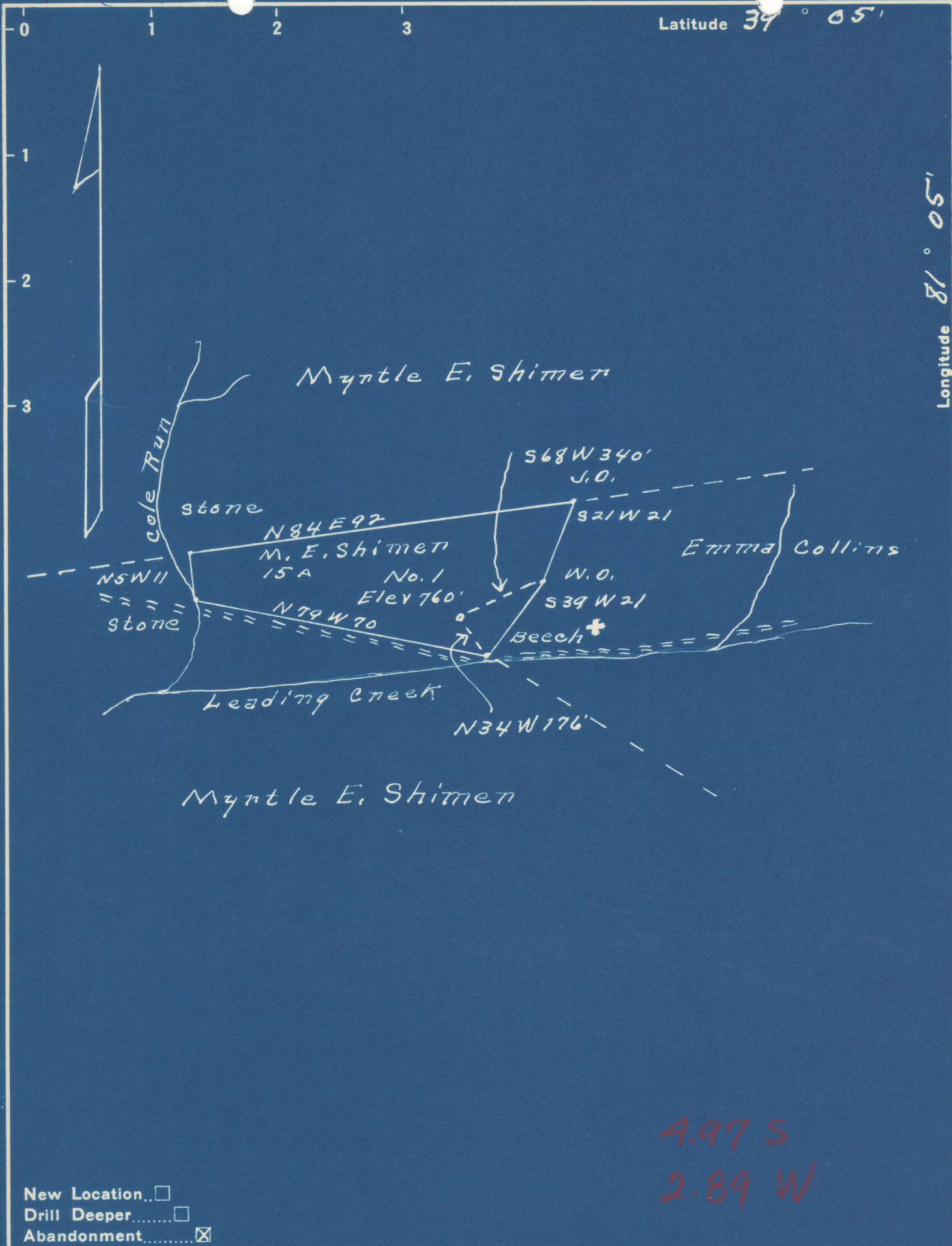


Latitude 39° 05'

Longitude 81° 05'



4.97 S
2.89 W

New Location..
 Drill Deeper.....
 Abandonment.....

Company B. B. Shimer
 Address Freed, W. Va.
 Farm Myrtle E. Shimer
 Tract _____ Acres 15 Lease No. _____
 Well (Farm) No. 1 Serial No. _____
 Elevation (Spirit Level) 760'
 Quadrangle Hann'sville
 County Calhoun District Sheridan
 Engineer Donald W. Morris
 Engineer's Registration No. 1653
 File No. _____ Drawing No. _____
 Date 1-8-49 Scale 1" = 30 poles

STATE OF WEST VIRGINIA
 DEPARTMENT OF MINES
 OIL AND GAS DIVISION
 CHARLESTON

WELL LOCATION MAP
 FILE NO. CAL-253-A

+ Denotes location of well on United States Topographic Maps, scale 1 to 62,500, latitude and longitude lines being represented by border lines as shown.

- Denotes one inch spaces on border line of original tracing.